

NATIONAL ELIGIBILITY CUM ENTRANCE TEST

NEET(UG), 2015 (CODE-B)

Answers & Solutions

Biology

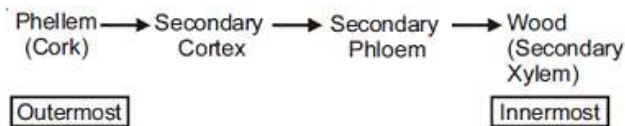
1. Read the different components from (a) to (d) in the list given below and tell the correct order of the components with reference to their arrangement from outer side to inner side in a woody dicot stem :

- (a) Secondary cortex
- (b) Wood
- (c) Secondary phloem
- (D) Phellem

- (1) (c), (d), (b), (a)
- (2) (a), (b), (d), (c)
- (3) (d), (a), (c), (b)
- (4) (d), (c), (a), (b)

Answer Key: (3)

Solution: Sequence of different components of woody dicot stem from outside to inner side is:



2. Chromatophores take part in :

- (1) Photosynthesis
- (2) Growth
- (3) Movement
- (4) Respiration

Answer Key: (1)

Solution: Chromatophores are photosynthetic apparatus in prokaryotes.

3. Which of the following joints would allow no movement?

- (1) Fibrous joint
- (2) Cartilaginous joint
- (3) Synovial joint
- (4) Ball and socket joint

Answer Key: (1)

Solution: Fibrous joint are immovable joints where two bones are connected with the help of fibrous connective tissue.

4. The wheat grain has an embryo with one large, shield-shaped cotyledon known as :

- (1) Epiblast
- (2) Coleorhiza
- (3) Scatellum

(4) Coleoptile

Answer Key: (3)

Solution: Scutellum is the large persistent cotyledon in embryo of wheat grain.

5. A gene showing codominance has :

- (1) One allele dominant on the other
- (2) Alleles tightly linked on the same chromosome
- (3) Alleles that are recessive to each other
- (4) Both alleles independently expressed in the heterozygote

Answer Key: (4)

Solution: Both alleles are independently expressed in heterozygote during codominance.

6. Which of the following structure is not found in a prokaryotic cell?

- (1) Nuclear envelope
- (2) Ribosome
- (3) Mesosome
- (4) Plasma membrane

Answer Key: (1)

Solution: True nucleus is absent in prokaryotic cell.

7. The term "linkage" was coined by :

- (1) T.H. Morgan
- (2) T. Boveri
- (3) G. Mendel
- (4) W. Sutton

Answer Key: (1)

Solution: The term "linkage" was coined by T.H. Morgan.

8. The imperfect fungi which are decomposers of litter and help in mineral cycling belong to :

- (1) Deuteromycetes
- (2) Basidiomycetes
- (3) Phycomycetes
- (4) Ascomycetes

Answer Key: (1)

Solution: Deuteromycetes - Imperfect fungi which are decomposers of litter and help in mineral cycling.

9. Match the columns and identify the correct option.

	Column I		Column II
(a)	Thylakoids	(i)	Disc-Shaped sacs in Golgi apparatus
(b)	Cristae	(ii)	Condensed structure of DNA
(c)	Cisternae	(iii)	Flat membranous sacs in stroma
(d)	Chromatin	(iv)	Infoldings in mitochondria

- | | | | |
|-----------|-------|------|------|
| (a) | (b) | (c) | (d) |
| (1) (iv) | (iii) | (i) | (ii) |
| (2) (iii) | (iv) | (i) | (ii) |
| (3) (iii) | (i) | (iv) | (ii) |
| (4) (iii) | (iv) | (ii) | (i) |

Answer Key: (2)

Solution: Thylakoids – Flat membranous sacs in stroma of chloroplast.

Cristae – Infoldings in mitochondria

Cisternae – Disc-shaped sacs in golgiapparatus

Chromatin – Condensed structure of DNA.

10. Select the wrong statement :

- (1) The viroids were discovered by D.J. Jvanowski
- (2) W.M. Stanley showed that viruses could be crystallized
- (3) The term '*contagium vivum fluidum*' was coined by M.W. Beijerinck
- (4) Mosaic disease in tobacco and AIDS in human being are caused by viruses

Answer Key: (1)

Solution: The viroids were discovered by T.O. Diener.

11. During biological nitrogen fixation, inactivation of nitrogenase by oxygen poisoning is prevented by:

- (1) Leghaemoglobin
- (2) Xanthophyll
- (3) Carotene
- (4) Cytochrome

Answer Key: (1)

Solution: During Biological nitrogen fixation, inactivation of nitrogenase by oxygen poisoning is prevented by pink coloured oxygen scavenger pigment leghaemoglobin.

12. The species confined to a particular region and not found elsewhere termed as :

- (1) Keystone
- (2) Alien
- (3) Endemic
- (4) Rare

Answer Key: (3)

Solution: The species confined to a particular region and not found elsewhere is termed as Endemic.

13. Which one of the following hormones is not involved in sugar metabolism?

- (1) Cortisone
- (2) Aldosterone
- (3) Insulin
- (4) Glucagon

Answer Key: (2)

Solution: Mineralocorticoid (Aldosterone) has no role in sugar metabolism. It helps in salt metabolism.

14. Which of the following is not a function of the skeletal system?

- (1) Production of erythrocytes
- (2) Storage of minerals
- (3) Production of body heat
- (4) Locomotion

Answer Key: (3)

Solution: Production of body heat is the function of adipose tissue.

15. Which one of the following is not applicable to RNA?

- (1) Complementary base pairing
- (2) 5' phosphoryl and 3' hydroxyl ends
- (3) Heterocyclic nitrogenous bases
- (4) Chargaff's rule

Answer Key: (4)

Solution: Chargaff's rule is applicable only for DNA.

16. Which one is a **wrong** statement?

- (1) Archegonia are found in Bryophyta, Pteridophyta and Gymnosperms
- (2) *Mucor* has biflagellate zoospores
- (3) Haploid endosperm is typical feature of gymnosperms
- (4) Brown algae have chlorophyll a and c, and fucoxanthin

Answer Key: (2)

Solution: *Mucor* has non-motile spore i.e. sporangiospores

17. A childless couple can be assisted to have a child through a technique called GIFT. The full form of this technique is :

- (1) Gamete inseminated fallopian transfer
- (2) Gamete intra fallopian transfer
- (3) Gamete internal fertilization and transfer
- (4) Germ cell internal fallopian transfer

Answer Key: (2)

Solution: GIFT - Gamete intra fallopian transfer

18. The wings of a bird and the wings of an insect are :

- (1) Homologous structures and represent divergent evolution
- (2) Analogous structures and represent convergent evolution
- (3) Phylogenetic structures and represent divergent evolution
- (4) Homologous structures and represent convergent evolution

Answer Key: (2)

Solution: The wings of a bird and an insect are analogous structure which differ in structure and origin but perform similar functions and represent convergent evolution.

19. Golden rice is a genetically modified crop plant where the incorporated gene is meant for biosynthesis of :

- (1) Vitamin B
- (2) Vitamin C
- (3) Omega 3
- (4) Vitamin A

Answer Key: (4)

Solution: Golden rice is nutritionally enriched rice and is meant for biosynthesis of vitamin A.

20. Outbreeding is an important strategy of animal husbandry because it :

- (1) Helps in accumulation of superior genes.
- (2) Is useful in producing pure lines of animals

- (3) Is useful in overcoming inbreeding depression
- (4) Expose harmful recessive genes that are eliminated by selection.

Answer Key: (3)

Solution: A single outcross (a type of outbreeding) is useful in overcoming inbreeding depression.

21. Which one of the following hormones though synthesised elsewhere, is stored and release by the master gland?

- (1) Antidiuretic hormone
- (2) Luteinizing hormone
- (3) Prolactin
- (4) Melanocyte stimulating hormone

Answer Key: (1)

Solution: Antidiuretic hormone is synthesized by the neurons of hypothalamus and stored in axon endings of posterior lobe of pituitary and released into the blood by posterior pituitary.

22. An association of individuals of different species living in the same habitat and having functional interections is:

- (1) Ecological niche
- (2) Biotic community
- (3) Ecosystem
- (4) Population

Answer Key: (2)

Solution: Populations of different species occurring in a habitat comprise the biotic community

23. In which of the following both pairs have correct combination?

(1)	Gaseous nutrient cycle	Carbon and Nitrogen
	Sedimentary nutrient cycle	Sulphur and Phosphorus
(2)	Gaseous nutrient cycle	Carbon and Sulphur
	Sedimentary nutrient cycle	Nitrogen and Phosphorus
(3)	Gaseous nutrient cycle	Nitrogen and Sulphur
	Sedimentary nutrient cycle	Carbon and phosphorus
(4)	Gaseous nutrient cycle	Sulphur and Phosphorus
	Sedimentary nutrient cycle	Carbon and Nitrogen

Answer Key: (1)

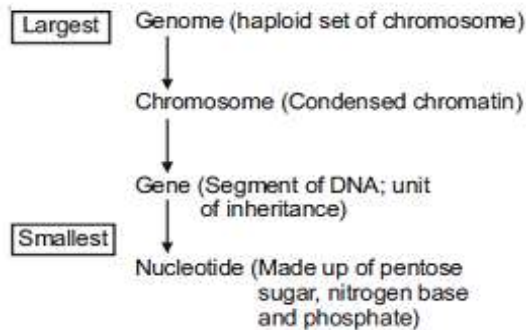
Solution: Sulphur and phosphorus are found on earth crust in the form of rocks

24. Identify the correct order of organization of genetic material from largest to smallest :

- (1) Chromosome, gene, genome, nucleotide
- (2) Genome, chromosomes, nucleotide, gene
- (3) Genome, chromosome, gene, nucleotide
- (4) Chromosome, genome, nucleotide, gene

Answer Key: (3)

Solution: Order of organisation of genetic material



25. A jawless fish, which lays eggs in fresh water and whose ammocoetes larvae after metamorphosis return to the ocean is :

- (1) Eptatretus
- (2) *Myxine*
- (3) *Neomyxine*
- (4) Petromyzon

Answer Key: (4)

Solution: Petromyzon (Lamprey) is a migratory marine water jawless fish which shows anadromous migration. It spawns in fresh water, stops feeding and dies. Its larva (Ammocoetes) after metamorphosis will return to ocean.

26. Industrial melanism is an example of :

- (1) Neo Darwinism
- (2) Natural selection
- (3) Mutation
- (4) Neo Lamarckism

Answer Key: (2)

Solution: Industrial melanism is an example of natural selection.

27. Cell wall is absent in:

- (1) *Aspergillus*
- (2) *Funaria*
- (3) *Mycoplasma*
- (4) *Nostoc*

Answer Key: (3)

Solution: Mycoplasma is wall-less smallest living organism

28. The chitinous exoskeleton of arthropods is formed by the polymerization of :

- (1) Keratin sulphate and chondroitin sulphate
- (2) D- glucosamine
- (3) N-acetyl glucosamine
- (4) Lipoglycans

Answer Key: (3)

Solution: Exoskeleton of arthropods is made up of chitin. Chitin is a polymer of N-acetyl glucosamine.

29. Filiform apparatus is characteristic features of :

- (1) Generative cell
- (2) Nucellar embryo
- (3) Aleurone cell
- (4) Synergids

Answer Key: (4)

Solution: Filiform apparatus is finger like projections in each synergid.

30. In angiosperms, microsporogenesis and megasporogenesis:

- (1) Occur in anther
- (2) Form gametes without further divisions
- (3) Involve meiosis
- (4) Occur in ovule

Answer Key: (3)

Solution: In angiosperms, microsporogenesis and megasporogenesis involve meiosis

31. Metagenesis refers to :

- (1) Presence of different morphic forms
- (2) Alternation of generation between asexual and sexual phases of an organism
- (3) Occurrence a drastic change in form during post-embryonic development
- (4) Presence of a segmented body and parthenogenetic mode of reproduction

Answer Key: (2)

Solution: In coelenterates, metagenesis is alternation of generation between polyp and medusa. Polyp reproduces asexually by budding to form medusa and medusa reproduces sexually to form polyp.

32. Which of the following immunoglobulins does constitute the largest percentage in human milk?

- (1) IgD
- (2) IgM
- (3) IgA
- (4) IgG

Answer Key: (3)

Solution: IgA is present in external body secretion including colostrum and milk. They provide naturally acquired passive immunity to child.

33. Destruction of the anterior horn cells of the spinal cord would result in loss of :

- (1) Sensory impulses
- (2) Voluntary motor impulses
- (3) Commissural impulses
- (4) Integrating impulses

Answer Key: (2)

Solution: Anterior horn cells are ventral horn cells of spinal cord which consists of motor neurons.

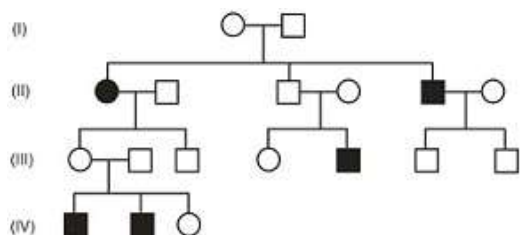
34. The cutting of DNA at specific location became possible with the discovery of :

- (1) Restriction enzymes
- (2) Probes
- (3) Selectable markers
- (4) Ligases

Answer Key: (1)

Solution: The cutting of DNA at specific locations became possible with the discovery of restriction enzymes called molecular scissors or knife.

35. In the following human pedigree, the filled symbols represents the affected individuals. Identify the type of given pedigree.

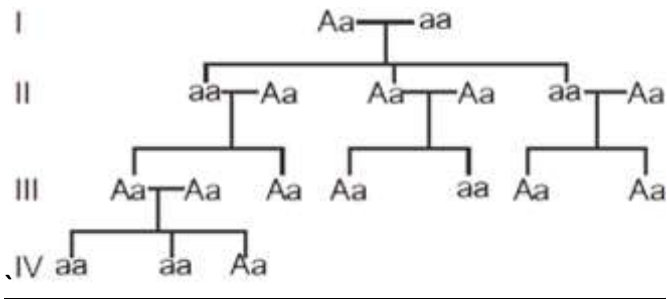


- (1) Autosomal dominant
- (2) X-linked recessive
- (3) Autosomal recessive

(4) X-linked dominant

Answer Key: (3)

Solution: The given pedigree represents inheritance of Autosomal recessive trait.

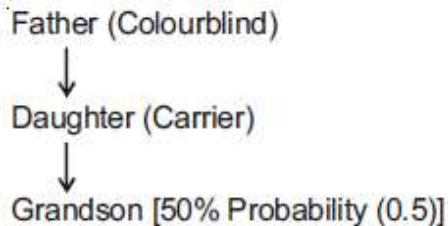


36. A colour blind man marries a woman with normal sight who has no history of colour blindness in her family. What is the probability of their grandson being colour blind?

- (1) 0.5
- (2) 1
- (3) Nil
- (4) 0.25

Answer Key: (1)

Solution:



37. Flowers are unisexual in

- (1) Pea
- (2) Cucumber
- (3) China rose
- (4) Onion

Answer Key: (2)

Solution: Flowers are unisexual in cucumber.

[Family - Cucurbitaceae]

38. Roots play insignificant role in absorption of water in :

- (1) Sunflower
- (2) Pistia
- (3) Pea
- (4) Wheat

Answer Key: (2)

Solution: Pistia - roots are poorly developed as it is free floating hydrophyte.

39. Balbiani rings are sites of:

- (1) Lipid synthesis
- (2) Nucleotide synthesis
- (3) Polysaccharide synthesis
- (4) RNA and protein synthesis

Answer Key: (4)

Solution: Balbiani rings are the large chromosome puff of polytene chromosomes. These are the sites of RNA and protein synthesis.

40. Which of the following pairs is not correctly matched?

	Mode of eproduction	Example
(1)	Offset	Water hyacinth
(2)	Rhizome	Banana
(3)	Binary fission	Sargassum
(4)	Conidia	Penicillium

Answer Key: (3)

Solution:

Mode of Reproduction	Example
(1) Rhizome	Banana
(2) Binary fission	<i>Saecharomyces</i> (Yeast)
(3) Conidia	<i>Penicillium</i> (Ascomycetes)
(4) Offset	Water hyacinth

41. Ectopic pregnancies are referred to as :

- (1) Pregnancies with genetic abnormality.
- (2) Implantation of embryo at side other than uterus
- (3) Implantation of defective embryo in the uterus
- (4) Pregnancies terminated due to hormonal imbalance

Answer Key: (2)

Solution: Any extra uterine pregnancy is ectopic pregnancy. Implantation can occur in the wall of abdominal cavity, ovaries but 90-95% of ectopic pregnancies are tubal pregnancy where implantation occurs in fallopian tube.

42. Choose the wrong statement:

- (1) Penicillium is multicellular and produces antibiotics
- (2) Neurospora is used in the study of biochemical genetics
- (3) Morels and truffles are poisonous mushrooms
- (4) Yeast is unicellular and useful in fermentation

Answer Key: (3)

Solution: Morels and truffles are edible fungi belong to class ascomycetes.

43. The function of the gap junction is to :

- (1) Performing cementing to keep neighbouring cell together
- (2) Facilitate communication between adjoining cells by connecting the cytoplasm for rapid transfer of ions, small molecules and some large molecules.
- (3) Separate two cells from each other
- (4) Stop substance from leaking across a tissue

Answer Key: (2)

Solution: Gap junctions are communicating junctions in animals which facilitates communication between two adjoining cells by protein bridges for rapid transfer of ions, small molecules and large molecules.

44. Axile placentation is present in :

- (1) Dianthus
- (2) Lemon
- (3) Pea
- (4) Argemone

Answer Key: (2)

Solution: The number of ovules are arranged on central axis in multilocular ovary.

45. Which of the following are not membrane – bound?

- (1) Vacuoles
- (2) Ribosomes
- (3) Lysosomes
- (4) Mesosomes

Answer Key: (2)

Solution: Ribosomes are made up of r-RNA and proteins.

46. In his classic experiments on pea plants, Mendel did not use :

- (1) Seed colour
- (2) Pod length
- (3) Seed shape
- (4) Flower position

Answer Key: (2)

Solution: Mendel did not selected Pod length as a character for study

47. During ecological succession :

- (1) The gradual and predictable change in species composition occurs in a given area
- (2) The establishment of a new biotic community is very fast in its primary phase
- (3) The numbers and types of animals remain constant
- (4) The changes lead to a community that is in near equilibrium with the environment and is called pioneer community

Answer Key: (1)

Solution: Ecological succession involves gradual and fairly predictable change in the species composition of a given area.

48. The body cells in cockroach discharges their nitrogenous waste in the Haemolymph mainly in the form of :

- (1) Ammonia
- (2) Potassium urate
- (3) Urea
- (4) Calcium carbonate

Answer Key: (2)

Solution: Malpighian tubules keep floating in haemolymph from where potassium waste diffuses into the tubule. Urate crystals are crystals of uric acid.

49. Which of the following biomolecules does have a phosphodiester bond?

- (1) Fatty acids in a diglyceride
- (2) Monosaccharides in a polysaccharide
- (3) Amino acids in a polypeptide
- (4) Nucleic acids in a nucleotide

Answer Key: (4)

Solution: Phosphodiester bond is formed between two nucleotides of nucleic acid.

50. The UN conference Parties in climate change in the year 2012 was held at :

- (1) Durban
- (2) Doha
- (3) Lima
- (4) Warsaw

Answer Key: (2)

Solution: The United Nations Climate change conferences are yearly conferences and are known as Conference of the Parties (COP).

51. Arrange the following events of meiosis in correct sequence :

- (a) Crossing over
 - (b) Synapsis
 - (c) Terminalisation of chiasmata
 - (d) Disappearance of nucleolus
- (1) (b), (a), (d), (c)
 - (2) (b), (a), (c), (d)
 - (3) (a), (b), (c), (d)
 - (4) (b), (c), (d), (a)

Answer Key: (2)

Solution: The sequence of event during meiosis are

52. Root pressure develops due to

- (1) Active absorption
- (2) Low osmotic potential in soil
- (3) Passive absorption
- (4) Increase in transpiration

Answer Key: (1)

Solution: As various ions from the soil are actively transported into the vascular tissues of the roots, water follows and increases the pressure inside the xylem i.e., root pressure (positive pressure).

53. Which one of the following animals has two separate circulatory pathways?

- (1) Frog
- (2) Lizard
- (3) Whale
- (4) Shark

Answer Key: (3)

Solution: Whale is a mammal which has 4 chambered heart, so has complete separation of oxygenated and deoxygenated blood. Whale have double circulatory pathways: Systemic and pulmonary circulation.

54. Which of the following events is not associated with ovulation in human female?

- (1) Decrease in estradiol
- (2) Full development of Graafian follicle
- (3) Release of secondary oocyte
- (4) LH surge

Answer Key: (1)

Solution: In 28 days reproductive cycle, ovulation occurs on 14th day due to LH surge. In the mid cycle, the level of FSH and estrogen are also high. The female gamete is released from the ovary in secondary oocyte stage after completing meiosis I.

55. Most animals that live in deep oceanic waters are :

- (1) Primary consumers
- (2) Secondary consumers
- (3) Tertiary consumers
- (4) Detritivores

Answer Key: (4)

Solution: Detritivores are an important aspect of many ecosystem. They can live on any soil with organic component, including marine ecosystem.

56. If you suspect major deficiency of antibodies in a person, to which of the following would you like for confirmation evidence?

- (1) Fibrinogen in plasma
- (2) Serum albumins
- (3) Haemocytes
- (4) Serum globulins

Answer Key: (4)

Solution: Antibodies are present in serum. They are glycoproteins and also called gammaglobulins synthesized in lymph nodes.

57. The structures that help some bacteria to attach to rocks and/or host tissue are :

- (1) Rhizoids
- (2) Fimbriae
- (3) Mesosomes
- (4) Holdfast.

Answer Key: (2)

Solution: Fimbriae - Hollow tubular surface appendages, present in bacterial cell, which help in attachment to rocks and / or host tissues.

58. Increase in concentration of the toxicant at successive trophic levels is known as :

- (1) Biomagnification
- (2) Biodeterioration
- (3) Biotransformation
- (4) Biogeochemical cycling

Answer Key: (1)

Solution: Increase in concentration of toxic substances in successive trophic level.

59. Body having meshwork of cells, internal cavities lined with food filtering flagellated cells and indirect development are the characteristics of phylum:

- (1) Coelenterata
- (2) Porifera
- (3) Mollusca
- (4) Protozoa

Answer Key: (2)

Solution: In poriferans, the body is loose aggregate of cells (meshwork of cells). Internal cavities and canals are lined with food filtering flagellated cells i.e. choanocyte/collar cell. Choanocytes help in filter feeding.

60. The oxygen evolved during photosynthesis comes from water molecules. Which one of the following pairs of elements is involved in this reaction?

- (1) Manganese and chlorine
- (2) Manganese and Potassium
- (3) Magnesium and Molybdenum
- (4) Magnesium and Chlorine

Answer Key: (1)

Solution: Manganese, chlorine and calcium help in photolysis of water during light reaction of photosynthesis.

61. The primary dentition in human differs from permanent dentition in not having one of the following type of teeth :

- (1) Canine
- (2) Premolars
- (3) Molars
- (4) Incisors

Answer Key: (2)

Solution: Dental formula of human adult (permanent dentition) = $\frac{2123}{2123}$.

Dental formula of child (primary dentition) = $\frac{2102}{2102}$

So premolars and third molar (last molar) are absent in primary dentition.

62. Coconut water from a tender coconut is :

- (1) Immature embryo
- (2) Free nuclear endosperm
- (3) Innermost layers of the seed coat
- (4) Degenerated nucellus

Answer Key: (2)

Solution: Coconut water is free nuclear endosperm.

63. Which of the following layers in an antral follicle is acellular?

- (1) Granulosa
- (2) Theca interna
- (3) Stroma
- (4) Zona pellucida

Answer Key: (4)

Solution: Zona pellucida is non-cellular membrane made up of glycoproteins. It is secreted by secondary oocyte in Graafian follicle.

64. The introduction of t-DNA into plants involves :

- (1) Infection of the plant by *Agrobacterium tumefaciens*
- (2) Altering the pH of the soil, then heat-shocking the plants
- (3) Exposing the plants to cold for a brief period
- (4) Allowing the plant roots to stand in water

Answer Key: (1)

Solution: When *Agrobacterium tumefaciens* infects the host plant, it will transfer a part of DNA called t-DNA without any human interference so called natural genetic engineer.

65. In which group of organisms the cell walls form two thin lapping shells which fit together

- (1) Chrysophytes
- (2) Euglenoids
- (3) Dinoflagellates
- (4) Slime moulds

Answer Key: (1)

Solution: Chrysophytes are photosynthetic protists. They have overlapping cell wall like soap box.

66. Human urine is usually acidic because

- (1) The sodium transporter exchanges one hydrogen ion for each sodium ion, in peritubular capillaries.
- (2) Excreted plasma proteins are acidic
- (3) Potassium and sodium exchange generates acidity
- (4) Hydrogen ions are actively secreted into the filtrate

Answer Key: (4)

Solution: Tubular secretion maintains the pH and ionic balance of body fluids in which hydrogen ions are actively secreted into the filtrate and bicarbonate ions are reabsorbed.

67. In photosynthesis, the light-independent reactions take place at :

- (1) Thylakoid lumen
- (2) Photosystem I
- (3) Photosystem II
- (4) Stromal matrix

Answer Key: (4)

Solution: Light-independent reactions or Dark reactions occur in stroma/ stromal matrix. During these reactions carbon dioxide is reduced to carbohydrates.

68. In mammalian eye, the 'fovea' is the center of the visual field, where :

- (1) High density of cones occur, but has no rods
- (2) The optic nerve leaves the eye
- (3) Only rods are present
- (4) More rods than cones are found

Answer Key: (1)

Solution: Fovea has highest visual acuity which has only cone cells and no rod cells.

69. The DNA molecule to which the gene of interest is integrated for cloning is called :

- (1) Transformer
- (2) Vector
- (3) Template
- (4) Carrier

Answer Key: (2)

Solution: The DNA molecule to which the gene of interest is integrated for cloning is called vector.

70. Pick up the **wrong** statement :

- (1) Cell wall is absent in Animalia
- (2) Protista have photosynthetic and heterotrophic modes of nutrition
- (3) Some fungi are edible
- (4) Nuclear membrane is present in Monera

Answer Key: (4)

Solution: The members of kingdom-Monera are prokaryotes they lack nuclear membrane.

71. Among China rose, mustard, brinjal, potato, guava, cucumber, onion and tulip, how many plants have superior ovary?

- (1) Five
- (2) Six
- (3) Three
- (4) Four

Answer Key: (2)

Solution: Superior ovary is found in plants i.e. china rose, mustard, brinjal, potato, onion and tulip.

72. Name the pulmonary disease in which alveolar surface area involved in gas exchange is drastically reduced due to damage in the alveolar walls.

- (1) Pleurisy
- (2) Emphysema
- (3) Pneumonia
- (4) Asthama

Answer Key: (2)

Solution: Emphysema is mainly due to cigarette smoking in which the walls of alveoli are damaged that leads to reduction in surface area for gaseous exchange.

73. A column of water within xylem vessels of tall trees does not break under its weight because of :

- (1) Dissolved sugars in water
- (2) Tensile strength of water
- (3) Lignification of xylem vessels
- (4) Positive root pressure

Answer Key: (2)

Solution: The column of water within Xylem vessel of tall trees does not break under its weight due to high tensile strength of water. Tensile strength is the ability to resist pulling forces.

74. Acid rain is caused by increase in the atmospheric concentration of :

- (1) SO_2 and NO_2
- (2) SO_3 and SO
- (3) CO_2 and CO
- (4) O_3 and dust

Answer Key: (1)

Solution: During rainfall, SO_2 and NO_2 can decrease the pH of rain water.

75. The enzyme that is not present in succus entericus is:

- (1) Maltase
- (2) Nucleases
- (3) Nucleosidase
- (4) Lipase

Answer Key: (2)

Solution: Succus entericus is intestinal juice contains maltase, lipase, nucleosidase. Nucleases are the enzymes of pancreatic juice.

76. In which of the following interactions both partners are adversely affected?

- (1) Competition
- (2) Predation
- (3) Parasitism
- (4) Mutualism

Answer Key: (1)

Solution: During competition, both partners are adversely affected.

77. Match the following list of microbes and their importance:

(a)	<i>Sacharomyces cerevisiae</i>	(i)	Production of immunosuppressive agents
(b)	<i>Monascus purpureus</i>	(ii)	Ripening of Swiss cheese
(c)	<i>Trichoderma polysporum</i>	(iii)	Commercial production of ethanol
(d)	<i>Propionibacterium shermanii</i>	(iv)	Production of blood-cholesterol lowering agents

- | | | | | |
|-----|-------|-------|------|-------|
| | (a) | (b) | (c) | (d) |
| (1) | (iii) | (iv) | (i) | (ii) |
| (2) | (iv) | (iii) | (ii) | (i) |
| (3) | (iv) | (ii) | (i) | (iii) |
| (4) | (iii) | (i) | (iv) | (ii) |

Answer Key: (1)

Solution:

Microbes	Importance
(1) <i>Sacharomyces</i>	– Commercial production of <i>erevisiae</i> ethanol.
(2) <i>Monascus</i>	– Production of blood purpureus cholesterol lowering agents
(3) <i>Trichoderma polysporum</i>	– Production of immunosuppressive agents
(4) <i>Propionibacterium sharmanii</i>	– Ripening of Swiss cheese

78. A pleiotropic gene

- (1) Is expressed only primitive plants
- (2) Is a gene evolved during Pliocene
- (3) Controls a trait only in combination with another gene
- (4) Controls multiple traits in an individual

Answer Key: (4)

Solution: The gene which controls multiple traits in an individual.

79. A protoplast is a cell :

- (1) Without plasma membrane
- (2) Without nucleus
- (3) Undergoing division
- (4) Without cell wall

Answer Key: (4)

Solution: Plant cell — Cell wall = Protoplast

80. Which of the following are most suitable indicators of SO_2 Pollution in the environment?

- (1) Lichens
- (2) Conifers
- (3) Algae
- (4) Fungi

Answer Key: (4)

Solution: Lichens do not grow in SO_2 polluted regions therefore they indicate SO_2 pollution in air. Phycobionts of lichen are sensitive to SO_2 .

81. Grafted kidney may be rejected in a patient due to:

- (1) Humoral immune response
- (2) Cell-mediated immune response
- (3) Passive immune response

(4) Innate immune response

Answer Key: (2)

Solution: Cell mediated immunity (CMI) is responsible for graft rejection.

82. Which one of the following fruits is parthenocarpic?

- (1) Brinjal
- (2) Apple
- (3) Jackfruit
- (4) Banana

Answer Key: (4)

Solution: Formation of fruit without fertilisation is called parthenocarpy. Banana is a parthenocarpic fruit therefore seedless.

83. Which of the following diseases is caused by a protozoan?

- (1) Syphilis
- (2) Influenza
- (3) Babesiosis
- (4) Blastomycosis

Answer Key: (3)

Solution: Babesiosis is a disease caused by a protozoan, *Babesia bigemina*. The vector is tick, so disease is also called tick fever in cattle.

84. In human females, meiosis-II is not completed until?

- (1) Puberty
- (2) Fertilization
- (3) Uterine implantation
- (4) Birth

Answer Key: (2)

Solution: In human females, meiosis II is completed after the entry of sperm into the cytoplasm of secondary oocyte at the time of fertilisation leading to the formation of ovum and IInd polar body.

85. Male gametophyte in angiosperms produces :

- (1) Two sperms and a vegetative cell
- (2) Single sperm and a vegetative cell
- (3) Single sperm and two vegetative cells
- (4) Three sperms

Answer Key: (1)

Solution: In angiosperms, pollen grain is first male gametophyte. Pollen grain divides into generative cell and vegetative cell. Generative cell further divides into two sperms.

86. Doctors use stethoscope to hear the sounds produced during each cardiac cycle. The second sound is heard when :

- (1) AV valves open up
- (2) Ventricular walls vibrate due to gushing in of blood from atria
- (3) Semilunar valves close down after the blood flows into vessels from ventricles
- (4) AV node receives signal from SA node

Answer Key: (3)

Solution: Second heart sound is 'DUP' which is produced during early ventricular diastole due to the sharp closure of semilunar valves.

87. Auxin can be bioassayed by:

- (1) Avena coleoptile curvature
- (2) Hydroponics
- (3) Potometer
- (4) Lettuce hypocotyl elongation

Answer Key: (1)

Solution: Avena coleoptile curvature test is the bioassay for auxin.

88. Satellite DNA is important because it:

- (1) Codes for proteins needed in cell cycle.
- (2) Shows high degree of polymorphism in population and also the same degree of polymorphism in an individual, which is heritable from parents to children.
- (3) Does not code for proteins and is same in all members of the population.
- (4) Codes for enzymes needed for DNA replication.

Answer Key: (2)

Solution: Satellite DNA are the repetitive DNA which do not code for any protein. They show high degree of polymorphism and form basis of DNA fingerprinting.

Since DNA from every tissue from an individual show the same degree of polymorphism, they become very useful identification tool in forensic applications.

89. Cellular organelles with membranes are:

- (1) Nuclei, ribosomes and mitochondria
- (2) Chromosomes, ribosomes and endoplasmic reticulum
- (3) Endoplasmic reticulum, ribosomes and nuclei
- (4) Lysosomes, Golgi apparatus and mitochondria

Answer Key: (4)

Solution: Lysosomes, Golgi apparatus and mitochondria are membrane bound organelles.

90. Eutrophication of water bodies leading to killing of fishes is mainly due to non-availability of:

- (1) Food
- (2) Light
- (3) Essential Minerals
- (4) Oxygen

Answer Key: (4)

Solution: During eutrophication of water bodies, BOD level increases due to rapid growth of microbes.

Physics

91. The cylindrical tube of a spray pump has radius R , one end of which has n fine holes, each of radius r . If the speed of the liquid in the tube is V , the speed of the ejection of the liquid through the holes is :

(1) $\frac{VR^2}{n^2r^2}$

(2) $\frac{VR^2}{nr^2}$

(3) $\frac{VR^2}{n^3r^2}$

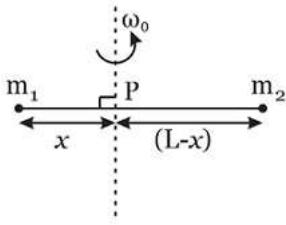
(4) $\frac{V^2R}{nr}$

Solution: (2)

Volume inflow rate = volume outflow rate

$$\pi R^2 V = n \pi r^2 v \Rightarrow v = \frac{\pi R^2 V}{n \pi r^2} = \frac{VR^2}{nr^2}$$

92. Point masses m_1 and m_2 are placed at the opposite ends of rigid rod of length L , and negligible mass. The rod is to be set rotating about an axis perpendicular to it. The position of point P on this rod through which the axis should pass so that the work required to set the rod rotating with angular velocity ω_0 is minimum, is given by:



(1) $x = \frac{m_1 L}{m_1 + m_2}$

(2) $x = \frac{m_1}{m_2} L$

(3) $x = \frac{m_2}{m_1} L$

(4) $x = \frac{m_1 L}{m_1 + m_2}$

Solution: (4)

$$\text{K. E.} = \frac{1}{2} I \omega^2$$

I is min. about the centre of mass

$$\text{So, } (m_1)(x) = (m_2)(L - x)$$

$$x = \frac{m_2 L}{m_1 + m_2}$$

93. A proton and an alpha particle both enter a region of uniform magnetic field B, moving at right angles to the field B. if the radius of circular orbits for both the particles is equal and the kinetic energy acquired by proton is 1 MeV, the energy acquired by the alpha particle will be:

- (1) 4 MeV
- (2) 0.5 MeV
- (3) 1..5 MeV
- (4) 1 MeV

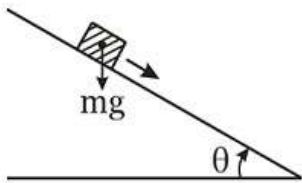
Solution: (4)

$$R = \frac{mV}{qB} = \frac{\sqrt{2m(kE)}}{qB}$$

Since R is same so $KE \propto \frac{q^2}{m}$

So KE of α particle will be $\frac{(2)^2}{4} = \text{same} = 1 \text{ MeV}$

94. A plank with a box on it at one end is gradually raised about the other end. As the angle of inclination with the horizontal reaches 30° , the box starts to slip and slides 4.0 m down the plank in 4.0 s. The coefficients of static and kinetic friction between the box and the plank will be, respectively:



- (1) 0.6 and 0.6
- (2) 0.6 and 0.5
- (3) 0.5 and 0.6
- (4) 0.4 and 0.3

Solution: (2)

$$\mu_s = \tan 30^\circ = \frac{1}{\sqrt{3}} = 0.5$$

$$\mu_s = 0.57 = 0.6$$

$$S = ut + \frac{1}{2}at^2$$

$$4 = \frac{1}{2}a(4)^2 \Rightarrow a = \frac{1}{2} = 0.5$$

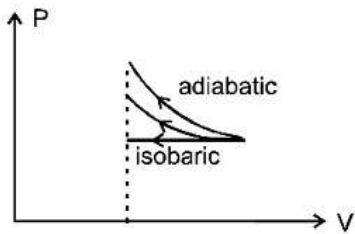
$$a = g \sin\theta - \mu_k(g)\cos\theta$$

$$\Rightarrow \mu_k = \frac{0.9}{\sqrt{3}} = 0.5$$

95. An ideal gas is compressed to half its initial volume by means of several processes. Which of the process results in the maximum work done on the gas?

- (1) Adiabatic
- (2) Isobaric
- (3) Isochoric
- (4) Isothermal

Solution: (1)

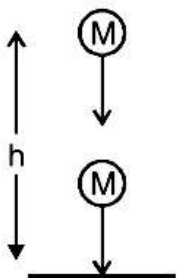


Since area under the curve is max for adiabatic process so work done on the gas will be max for adiabatic process.

96. A ball is thrown vertically downwards from a height of 20 m with an initial velocity v_0 . It collides with the ground, loses 50 percent of its energy in collision and rebounds to the same height. The initial velocity v_0 is: (Take $g = 10 \text{ ms}^{-2}$)

- (1) 14 ms^{-1}
- (2) 20 ms^{-1}
- (3) 28 ms^{-1}
- (4) 10 ms^{-1}

Solution: (2)



$$\frac{KE_f}{KE_i} = \frac{1}{2}$$

$$\frac{V_f}{V_i} = \frac{1}{\sqrt{2}}$$

$$\frac{\sqrt{2gh}}{\sqrt{V_0^2 + 2gh}} = \frac{1}{\sqrt{2}}$$

$$V_0 = 20 \text{ m/sec}$$

97. In the spectrum of hydrogen, the ratio of the longest wavelength in the Lyman series to the longest wavelength in the Balmer series is:

- (1) $\frac{4}{9}$
- (2) $\frac{9}{4}$
- (3) $\frac{27}{5}$
- (4) $\frac{5}{27}$

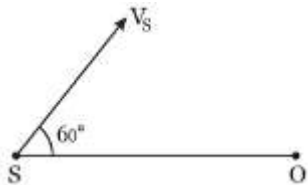
Solution: (4)

$$\frac{1}{\lambda_1} = R_e \left(\frac{1}{1^2} - \frac{1}{2^2} \right)$$

$$\frac{1}{\lambda_2} = R_e \left(\frac{1}{2^2} - \frac{1}{3^2} \right)$$

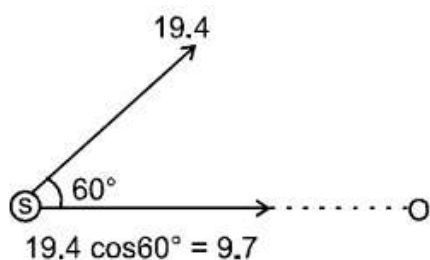
$$\frac{\lambda_1}{\lambda_2} = \frac{5}{27}$$

98. A source of sound S emitting waves of frequency 100 Hz and an observer O are located at some distance from each other. The source is moving with a speed of 19.4 ms^{-1} at an angle of 60° with the source observer line as shown in the figure. The observer is at rest. The apparent frequency observed by the observer (velocity of sound in air 330 ms^{-1}), is:



- (1) 100 Hz
- (2) 103 Hz
- (3) 106 Hz
- (4) 97 Hz

Solution: (2)



$$t^1 = f_0 \left(\frac{v - v}{v - v_s} \right)$$

$$f^1 = 100 \left(\frac{v - 0}{v - (+9.7)} \right)$$

$$f^1 = 100 \frac{v}{v \left(1 - \frac{9.7}{v} \right)}$$

$$f^1 = 100 \left(1 + \frac{3.7}{330} \right) = 103 \text{ Hz}$$

99. If dimensions of critical velocity v_c of a liquid flowing through a tube are expressed as $[\eta^x \rho^y r^z]$, where η , ρ and r are the coefficient of viscosity of liquid, density of liquid and radius of the tube respectively, then the values of x , y and z are given by:

- (1) $1, -1, -1$
- (2) $-1, -1, 1$
- (3) $-1, -1, -1$
- (4) $1, 1, 1$

Solution: (1)

$$V_c = \eta^x \rho^y r^z$$

Critical velocity is given by $V_c = \frac{R\eta}{2\rho r}$

So, $x = 1$

$y = -1$

$z = -1$

100. 4.0 g of a gas occupies 22.4 liters at NTP. The specific heat capacity of the gas at constant volume is $5.0 \text{ JK}^{-1} \text{ mol}^{-1}$. If the speed of sound in this gas at NTP is 952 ms^{-1} , then the heat capacity at constant pressure is

(Take gas constant $R = 8.3 \text{ JK}^{-1} \text{ mol}^{-1}$)

- (1) $8.0 \text{ JK}^{-1} \text{ mol}^{-1}$
- (2) $7.5 \text{ JK}^{-1} \text{ mol}^{-1}$
- (3) $7.0 \text{ JK}^{-1} \text{ mol}^{-1}$

(4) $8.5 \text{ JK}^{-1} \text{ mol}^{-1}$

Solution: (1)

No. of mole of gas = 1 so molar mass = 4g/mole

$$V = \sqrt{\frac{\gamma RT}{m}} \Rightarrow 952 \times 952 = \frac{\gamma \times 3.3 \times 273}{4 \times 10^{-3}} \Rightarrow \gamma = 1.6 = \frac{16}{10} = \frac{8}{5}$$

101. If vectors $\vec{A} = \cos \omega t \hat{i} + \sin \omega t \hat{j}$ and $\vec{B} = \cos \frac{\omega t}{2} \hat{i} + \sin \frac{\omega t}{2} \hat{j}$ are functions of times, then the value of t at which they are orthogonal to each other is:

- (1) $t = \frac{\pi}{4\omega}$
- (2) $t = \frac{\pi}{2\omega}$
- (3) $t = \frac{\pi}{\omega}$
- (4) $t = 0$

Solution: (3)

$$\vec{A} = \cos \omega t \hat{i} + \sin \omega t \hat{j}$$

$$\vec{B} = \cos \frac{\omega t}{2} \hat{i} + \sin \frac{\omega t}{2} \hat{j}$$

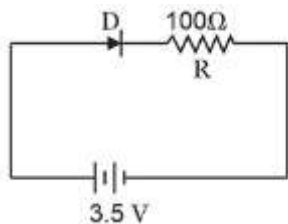
for $\vec{A} \cdot \vec{B} = 0$

$$\vec{A} \cdot \vec{B} = 0 = \cos \omega t \cdot \cos \frac{\omega t}{2} + \sin \omega t \cdot \sin \frac{\omega t}{2}$$

$$= \cos \left(\omega t - \frac{\omega t}{2} \right) = \cos \left(\frac{\omega t}{2} \right)$$

$$\text{So } \frac{\omega t}{2} = \frac{\pi}{2} \Rightarrow t = \frac{\pi}{\omega}$$

102. In the given figure, a diode D is connected to an external resistance $R = 100 \Omega$ and an e.m.f. of 3.5 V. If the barrier potential developed across the diode is 0.5 V, the current in the circuit will be:



- (1) 30 mA
- (2) 40 mA
- (3) 20 mA
- (4) 35 mA

Solution: (1)

$$\begin{aligned}\text{Current} &= \frac{(3.5 - 0.5)}{100} \text{ A} \\ &= \frac{3}{100} \text{ A} = 30 \text{ mA}\end{aligned}$$

103. If potential (in volts) in a region is expressed as $V(x, y, z) = 6xy - y + 2yz$, the electric field (in N/C) at point (1, 1, 0) is:

- (1) $-(3\hat{i} + 5\hat{j} + 3\hat{k})$
- (2) $-(6\hat{i} + 5\hat{j} + 2\hat{k})$
- (3) $-(2\hat{i} + 3\hat{j} + \hat{k})$
- (4) $-(6\hat{i} + 9\hat{j} + \hat{k})$

Solution: (2)

$$V = 6xy - y + 24z$$

$$\vec{E} = \left(\frac{\partial V}{\partial x} \hat{i} + \frac{\partial V}{\partial y} \hat{j} + \frac{\partial V}{\partial z} \hat{k} \right)$$

$$\vec{E} = [(6y)\hat{i} + (6x - 1 + 2z)\hat{j} + (2y)\hat{k}]$$

$$\begin{aligned}\vec{E} &= -(6\hat{i} + 5\hat{j} + 2\hat{k}) \\ (1, 1, 0)\end{aligned}$$

104. A remote-sensing satellite of earth revolves in a circular orbit at a height of 0.25×10^6 m above the surface of earth. If earth's radius is 6.38×10^6 m and $g = 9.8 \text{ ms}^{-2}$, then the orbital speed of the satellite is:

- (1) 7.76 km s^{-1}
- (2) 8.56 km s^{-1}
- (3) 9.13 km s^{-1}
- (4) 6.67 km s^{-1}

Solution: (1)

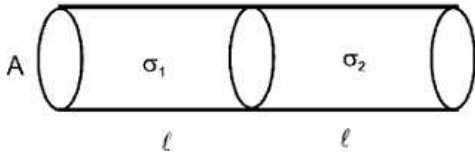
$$\begin{aligned}V_0 &= \sqrt{\frac{GM}{r}} = \sqrt{\frac{GM}{R^2} \cdot \frac{R^2}{r}} \\ &= \sqrt{\frac{9.8 \times 6.38 \times 6.38}{6.63 \times 10^6}} = \sqrt{60 \times 10^6} \text{ m/sec} \\ &= 7.76 \text{ km/sec}\end{aligned}$$

105. Two metal wires of identical dimensions are connected in series. If v_1 and v_2 are the conductivities of the metal wires respectively, the effective conductivity if the combination is:

- (1) $\frac{2 \sigma_1 \sigma_2}{\sigma_1 + \sigma_2}$
- (2) $\frac{\sigma_1 + \sigma_2}{2 \sigma_1 \sigma_2}$

- (3) $\frac{\sigma_1 + \sigma_2}{\sigma_1 \sigma_2}$
 (4) $\frac{\sigma_1 \sigma_2}{\sigma_1 + \sigma_2}$

Solution: (1)



$$R_{ec} = \frac{\ell}{\sigma_1 A} + \frac{\ell}{\sigma_2 A} = \frac{\ell_{eq}}{\sigma_{eq} A_{eq}}$$

$$\frac{2\ell}{\sigma_{eq} A} = \frac{\ell}{A} \left(\frac{\sigma_1 + \sigma_2}{\sigma_1 \sigma_2} \right)$$

$$\sigma_{eq} = \frac{2\sigma_1 \sigma_2}{\sigma_1 + \sigma_2}$$

106. A satellite S is moving in an elliptical orbit around the earth. The mass of the satellite is very small compared to the mass of the earth. Then,

- (1) The angular momentum of S about the centre of the earth changes in direction, but its magnitude remains constant
 (2) The total mechanical energy of S varies periodically with time
 (3) The linear momentum of S remains constant in magnitude
 (4) The acceleration of S is always directed towards the centre of the earth

Solution: (4)

The gravitation force on the satellite will be aiming toward the centre of earth so acceleration of the satellite will also be aiming toward the centre of earth.

107. Two particles A and B move with constant velocities \vec{v}_1 and \vec{v}_2 . At the initial moment their position vectors \vec{r}_1 and \vec{r}_2 respectively. The condition for particles A and B for their collision is:

- (1) $\frac{\vec{r}_1 - \vec{r}_2}{|\vec{r}_1 - \vec{r}_2|} = \frac{\vec{v}_2 - \vec{v}_1}{|\vec{v}_2 - \vec{v}_1|}$
 (2) $\vec{r}_1 \cdot \vec{v}_1 = \vec{r}_2 \cdot \vec{v}_2$
 (3) $\vec{r}_1 \times \vec{v}_1 = \vec{r}_2 \times \vec{v}_2$
 (4) $\vec{r}_1 - \vec{r}_2 = \vec{v}_1 - \vec{v}_2$

Solution: (1)

For two particles to collide, the direction of the relative velocity of one with respect to other should be directed towards the relative position of the other particle

i.e. $\frac{\vec{r}_1 - \vec{r}_2}{|\vec{r}_1 - \vec{r}_2|} \rightarrow$ direction of relative position of 1 w.r.t. 2.

& $\frac{\vec{v}_2 - \vec{v}_1}{|\vec{v}_2 - \vec{v}_1|} \rightarrow$ direction of velocity of 2 w.r.t. 1

So for collision of A & B

$$\frac{\vec{r}_1 - \vec{r}_2}{|\vec{r}_1 - \vec{r}_2|} = \frac{\vec{v}_2 - \vec{v}_1}{|\vec{v}_2 - \vec{v}_1|}$$

108. Two stones of masses m and $2m$ are whirled in horizontal circles, the heavier one in a radius $\frac{r}{2}$ and the lighter one in radius r . The tangential speed of lighter stone is n times that of the value of heavier stone when they experience same centripetal forces. The value of n is:

- (1) 2
- (2) 3
- (3) 4
- (4) 1

Solution: (1)

$$F_c = \frac{mv_1^2}{r} = \frac{2mv_2^2}{\left(\frac{r}{2}\right)} = \frac{4mv_2^2}{r}$$

$$\text{So } v_1 = 2v_2$$

109. A parallel plate air capacitor has capacity ' C ', distance of separation between plates is ' d ' and potential difference ' V ' is applied between the plates. Force of attraction between the plates of the parallel plate air capacitor is:

- (1) $\frac{C^2 V^2}{2d}$
- (2) $\frac{CV^2}{2d}$
- (3) $\frac{CV^2}{d}$
- (4) $\frac{C^2 V^2}{2d^2}$

Solution: (2)

$$F = \frac{q^2}{2A\epsilon_0} \text{ where } q = CV \text{ and } C = \frac{\epsilon_0 A}{d}$$

$$F = \frac{C^2 V^2}{2Cd} = \frac{CV^2}{2d}$$

110. The position vector of a particle \vec{R} as a function of time is given by:

$$\vec{R} = 4 \sin(2\pi t) \hat{i} + 4 \cos(2\pi t) \hat{j}$$

Where R is in meters, t is in seconds and \hat{i} and \hat{j} denote unit vectors along x - and y -directions, respectively. Which one of the following statements is wrong for the motion of particle?

- (1) Acceleration vector is along $-\vec{R}$.
- (2) Magnitude of acceleration vector is $\frac{v^2}{R}$, where v is the velocity of particle.
- (3) Magnitude of the velocity of particle is 8 meter/second
- (4) Path of the particle is a circle of radius 4 meter.

Solution: (3)

$$x = 45 \sin 2\pi t,$$

$$y = 4 \cos(2\pi t)$$

Squaring and adding

⇒ Circular motion

$$V = \omega r = (2\pi)(4) = 8\pi$$

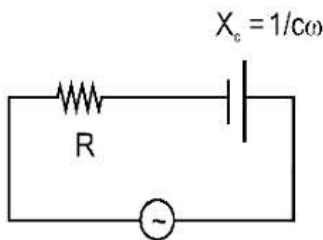
111. A series R-C circuit is connected to an alternating voltage source. Consider two situations:

- i. When capacitor is air filled.
- ii. When capacitor is mica filled.

Current through resistor is i and voltage across capacitor is V then:

- (1) $V_a < V_b$
- (2) $V_a > V_b$
- (3) $i_a > i_b$
- (4) $V_a = V_b$

Solution: (2)



$$i = \frac{v}{\sqrt{R^2 + \left(\frac{1}{c\omega}\right)^2}}$$

$$V_C = \frac{v}{\sqrt{R^2 + \left(\frac{1}{c\omega}\right)^2}} \times \left(\frac{1}{c\omega}\right)$$

$$V_C = \frac{V}{\sqrt{(Rc\omega)^2 + 1}}$$

If we fill a di-electric material

$$C \uparrow \Rightarrow V_C \downarrow$$

112. A string is stretched between fixed points separated by 75.0 cm. It is observed to have resonant frequencies of 420 Hz and 315 Hz. There are no other resonant frequency for this string is:

- (1) 155 Hz

- (2) 205 Hz
- (3) 10.5 Hz
- (4) 105 Hz

Solution: (4)

Two consecutive resonant frequencies for a string fixed at both ends will be

$$\frac{nv}{2\ell} \text{ and } \frac{(n+1)v}{2\ell}$$

$$\Rightarrow \frac{(n+1)v}{2\ell} - \frac{nv}{2\ell} = 420 - 315$$

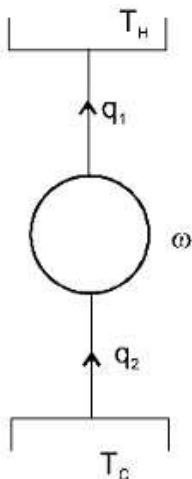
$$\frac{v}{2\ell} = 105 \text{ Hz}$$

Which is the minimum resonant frequency.

113. The coefficient of performance of a refrigerator is 5. If the temperature inside freezer is -20°C , the temperature of the surrounding to which is rejects heat is:

- (1) 31°C
- (2) 41°C
- (3) 11°C
- (4) 21°C

Solution: (1)



$$\text{cop} = \frac{q_1}{w} = \frac{q_2}{q_1 - q_2} = \frac{T_C}{T_H - T_C} = 5$$

$$T_C = 5T_H - 5T_C$$

$$6T_C = 5T_H$$

$$T_H = \frac{6}{5} \times 253\text{k} = 303.6\text{k} = 30.6^\circ\text{C} = 31^\circ\text{C}$$

114. A photoelectric surface is illuminated successively by monochromatic light of wavelength λ and $\frac{\lambda}{2}$. If the maximum kinetic energy of the emitted photoelectrons in the second case is 3 times that in the first case, the work function of the surface of the material is:

(h = Planck's constant, c = speed of light)

- (1) $\frac{hc}{2\lambda}$
- (2) $\frac{hc}{\lambda}$
- (3) $\frac{2hc}{\lambda}$
- (4) $\frac{hc}{3\lambda}$

Solution: (1)

$$k_1 = \frac{hc}{\lambda} - \psi$$

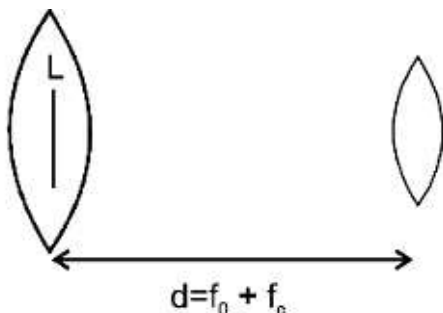
$$k_2 = 3k_1 = \frac{2hc}{\lambda} - \psi = \frac{3hc}{\lambda} - 3\psi$$

$$\text{So } 2\psi = \frac{hc}{\lambda} \quad \text{So } \psi = \frac{hc}{2\lambda}$$

115. In an astronomical telescope in normal adjustment a straight black line of the length L is drawn on inside part of objective lens. The eye-piece forms a real image of this line. The length of this image is l . The magnification of the telescope is:

- (1) $\frac{L}{l} + 1$
- (2) $\frac{L}{l} - 1$
- (3) $\frac{L+l}{L-l}$
- (4) $\frac{L}{l}$

Solution: (4)



Magnification by eyepiece

$$m = \frac{f}{f+u}$$

$$-\frac{I}{L} = \frac{f_e}{f_e + -(f_0 + f_e)}$$

$$\Rightarrow \frac{I}{L} = \frac{f_e}{f_0}$$

$$\text{m. p.} = \frac{f_0}{f_e} = \frac{L}{I}$$

116. Two slits in Young's experiment have widths in the ratio 1 : 25. The ratio of intensity at the maxima and minima in the interference pattern, $\frac{I_{\max}}{I_{\min}}$ is:

- (1) $\frac{9}{4}$
- (2) $\frac{121}{49}$
- (3) $\frac{49}{121}$
- (4) $\frac{4}{9}$

Solution: (1)

$$\frac{I_1}{I_2} = \frac{25}{1} \Rightarrow \frac{A_1}{A_2} = \frac{5}{1}$$

$$\frac{A_{\max}}{A_{\min}} = \frac{5+1}{5-1} = \frac{6}{4} = \frac{3}{2}$$

$$\frac{I_{\max}}{I_{\min}} = \left(\frac{3}{2}\right)^2 = \frac{9}{4}$$

117. Two vessels separately contain two ideal gases A and B at the same temperature, the pressure of A being twice that of B. Under such conditions, the density of A is found to be 1.5 times the density of B. The ratio of molecular weight of A and B is:

- (1) $\frac{2}{3}$
- (2) $\frac{3}{4}$
- (3) 2
- (4) $\frac{1}{2}$

Solution: (2)

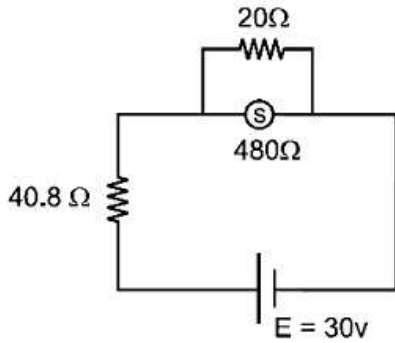
$$P_A = \frac{\rho_A M_A}{RT}, P_B = \frac{\rho_B M_B}{RT} = \frac{3}{2} \Rightarrow \frac{P_A}{P_B} = \frac{\rho_A}{\rho_B} \frac{M_A}{M_B} = 2 \frac{M_A}{M_B} = \frac{3}{2}$$

$$\text{So, } \frac{M_A}{M_B} = \frac{3}{4}$$

118. A circuit contains an ammeter, a battery of 30 v and a resistance 40.8 ohm all connected in series. If the ammeter has coil of resistance 480 ohm and a shunt of 20 ohm, the reading in the ammeter will be:

- (1) 0.5 A
- (2) 0.25 A
- (3) 2 A
- (4) 1 A

Solution: (1)



$$\text{Resistance of ammeter} = \frac{480 \times 20}{480 + 20} = 19.2 \Omega$$

$$i = \frac{30}{40.8 + 19.2} = 0.5 \text{ A}$$

119. The value of coefficient of volume expansion of glycerin is $5 \times 10^{-4} \text{ K}^{-1}$. The fractional change in the density of glycerin for a rise of 40°C in its temperature is:

- (1) 0.015
- (2) 0.020
- (3) 0.025
- (4) 0.010

Solution: (2)

$$\rho = \rho_0(1 - \gamma \Delta t)$$

$$\frac{\Delta \rho}{\rho_0} = \gamma \Delta T = (5 \times 10^{-4})(40) = 0.02$$

120. The heart of a man pumps 5 litres of blood through the arteries per minute at a pressure of 150 mm of mercury. If the density of mercury be $13.6 \times 10^3 \text{ kg/m}^3$ and $g = 10 \text{ m/s}^2$ then the power of heart in watt is:

- (1) 1.70
- (2) 2.35
- (3) 3.0
- (4) 1.50

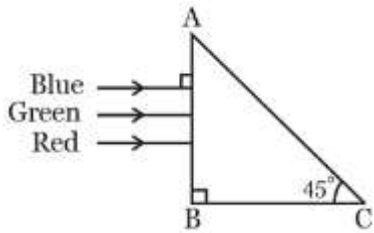
Solution: (1)

$$\text{Power} = \vec{F} \cdot \vec{V} = P A \vec{V} = \rho g h A V$$

$$= 13.6 \times 10^3 \times 10 \times 150 \times 10^{-3} \times 0.5 \times 10^{-3} / 60 \text{ watt}$$

$$= \frac{102}{60} \text{ watt} = 1.70 \text{ watt.}$$

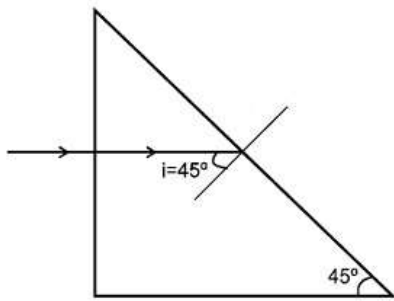
121. A beam of light consisting of red, green and blue colours is incident on a right angled prism. The refractive index of the material of the prism for the above red, green and blue wavelengths are 1.39, 1.44 and 1.47 respectively.



The prism will:

- (1) Separate the blue colour part from the red and green colours
- (2) Separate all the three colours from one another
- (3) Not separate the three colours at all
- (4) Separate the red colour part from the green and blue colours

Solution: (4)



For TIR $i > i_c$ so $\sin i > \sin i_c$

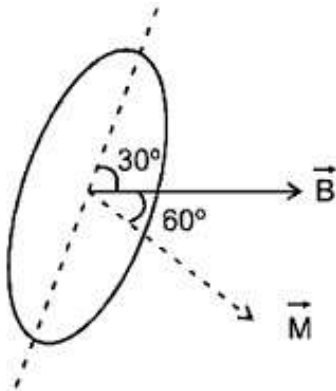
$$\sin 45^\circ > \frac{1}{\mu} \Rightarrow \mu \sqrt{2} \Rightarrow \mu = 1.414$$

Since μ of green and violet are greater than 1.414 so they will total internal reflect. But red colour will be refracted.

122. A rectangular coil of length 0.12 m and width 0.1 m having 50 turns of wire is suspended vertically in a uniform magnetic field of strength 0.2 Weber/m². The coil carries a current of 2A. if the plane of the coil is inclined at an angle of 30° with the direction of the field, the torque required to keep coil in stable equilibrium will be:

- (1) 0.15 Nm
- (2) 0.20 Nm
- (3) 0.24 Nm
- (4) 0.12 Nm

Solution: (2)



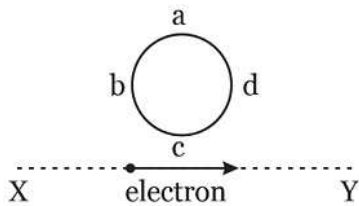
$$\vec{\tau} = \vec{M} \times \vec{B} = MB \sin 60^\circ$$

$$= Ni AB \sin 60^\circ$$

$$50 \times 2 \times 0.12 \times 0.1 \times 0.2 \times \frac{\sqrt{3}}{2}$$

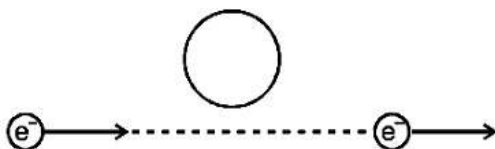
$$= 12\sqrt{3} \times 10^{-2} \text{ Nm} = 0.20748 \text{ Nm}$$

123. An electron moves on a straight line path XY as shown. The abcd is a coil adjacent to the path of electron. What will be the direction of current, if any, induced in the coil?



- (1) abcd
- (2) adcb
- (3) The current will reverse its direction as the electron goes past the coil
- (4) No current induced

Solution: (3)



When e^- comes closer the induced current will be anticlockwise

When e^- comes farther induced current will be clockwise.

124. A nucleus of uranium decays at rest into nuclei of thorium and helium. Then:

- (1) The helium nucleus has more kinetic energy than the thorium nucleus
- (2) The helium nucleus has less momentum than the thorium nucleus
- (3) The helium nucleus has more momentum than the thorium nucleus
- (4) The helium nucleus has less kinetic energy than the thorium nucleus

Solution: (1)

$$U \rightarrow Th + \alpha$$

$$KE_{Th} = \frac{p^2}{2m_{Th}}, KE_{\alpha} = \frac{p^2}{2m_{\alpha}}$$

Since m_{α} is less so KE_{α} will be more.

125. A force $\vec{F} = \alpha\hat{i} + 3\hat{j} + 6\hat{k}$ is acting at a point $\vec{r} = 2\hat{i} - 6\hat{j} - 12\hat{k}$. The value of α for which angular momentum about origin is conserved is:

- (1) -1
- (2) 2
- (3) Zero
- (4) 1

Solution: (1)

If $\vec{L} = \text{constant}$ then $\vec{\tau} = 0$

So $\vec{r} \times \vec{F} = 0 \Rightarrow \vec{F}$ should be parallel to \vec{r} so coefficient should be in same ratio. So $\frac{\alpha}{2} = \frac{3}{-6} = \frac{6}{-12}$

So $\alpha = -1$

126. Water rises to a height 'h' in capillary tube. If the length of capillary tube above the surface of water is made less than 'h', then:

- (1) Water rises upto the tip of capillary tube and then starts overflowing like a fountain
- (2) Water rises upto the top of capillary tube and stays there without overflowing
- (3) Water rises upto a point a little below the top and stays there
- (4) Water does not rise at all

Solution: (2)

Water will not overflow but will change its radius of curvature.

127. A particle is executing a simple harmonic motion. Its maximum acceleration is α and maximum velocity is β . Then, its time period of vibration will be:

- (1) $\frac{\beta^2}{\alpha^2}$
- (2) $\frac{\alpha}{\beta}$

$$(3) \frac{\beta^2}{\alpha}$$

$$(4) \frac{2\pi\beta}{\alpha}$$

Solution: (4)

$$\omega^2 A = \alpha$$

$$\omega A = \beta$$

$$\Rightarrow \omega = \frac{\alpha}{\beta}$$

$$\Rightarrow T = \frac{2\pi}{\omega} = \frac{2\pi\beta}{\alpha}$$

128. The energy of the em waves is of the order of 15 keV. To which part of the spectrum does it belong?

(1) X-rays

(2) Infra-red rays

(3) Ultraviolet rays

(4) γ -rays

Solution: (1)

Wavelength of the ray

$$\lambda = \frac{hc}{E}$$

$$= 0.826 \text{ \AA}$$

Since $\lambda < 100 \text{ \AA}$

So it is X-ray

129. Light of wavelength 500 nm is incident on a metal with work function 2.258 eV. The de Broglie wavelength of the emitted electron is:

$$(1) < 2.8 \times 10^{-10} \text{ m}$$

$$(2) < 2.8 \times 10^{-9} \text{ m}$$

$$(3) \geq 2.8 \times 10^{-9} \text{ m}$$

$$(4) \leq 2.8 \times 10^{-12} \text{ m}$$

Solution: (3)

$$KE_{\max} = \frac{hc}{\lambda} - \Psi$$

$$KE_{\max} = \frac{1240}{500} - 2.82$$

$$KE_{\max} = 2.48 - 2.28 = 0.2 \text{ eV}$$

$$\lambda_{\min} = \frac{h}{\sqrt{2m(KE)_{\max}}} = \frac{\frac{20}{3} \times 10^{-34}}{\sqrt{2 \times 9 \times 10^{-31} \times 0.2 \times 1.6 \times 10^{-19}}}$$

$$\lambda_{\min} = \frac{25}{9} \times 10^{-9} = 2.80 \times 10^{-9} \text{ nm}$$

So $\lambda \geq 2.8 \times 10^{-9} \text{ m}$

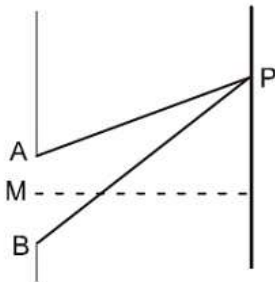
130. At the first minimum adjacent to the central maximum of a single-slit diffraction pattern, the phase difference between the Huygen's wavelet from the edge of the slit and the wavelet from the midpoint of the slit is:

- (1) $\frac{\pi}{4}$ radian
- (2) $\frac{\pi}{2}$ radian
- (3) π radian
- (4) $\frac{\pi}{8}$ radian

Solution: (3)

For first minima

$$AP - BP = \lambda$$



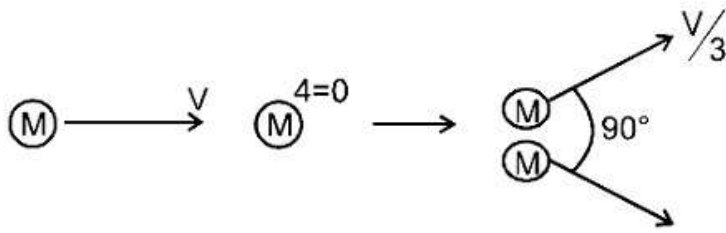
$$AP - MP = \frac{\lambda}{2}$$

$$\text{So phase difference} = \frac{2\pi}{\lambda} \times \frac{\lambda}{2} = \pi$$

131. On a frictionless surfaces, a block of mass M moving at speed v collides elastically with another block of same mass M which is initially at rest. After collision the first block moves at an angle θ to its initial direction and has a speed $\frac{v}{3}$. The second block's speed after the collision is:

- (1) $\frac{2\sqrt{2}}{3} v$
- (2) $\frac{3}{4} v$
- (3) $\frac{3}{\sqrt{2}} v$
- (4) $\frac{\sqrt{3}}{2} v$

Solution: (1)



$$\vec{P}_i = \vec{P}_f$$

$$\Rightarrow |P_i| = |P_f| \Rightarrow \sqrt{\left(m \frac{V}{3}\right)^2 + (mV_2)^2}$$

$$V_2 = \frac{2\sqrt{2}}{3} V$$

132. A potentiometer wire of length L and a resistance r are connected in series with a battery of e.m.f. E_0 and a resistance r_1 . An unknown e.m.f. E is balanced at a length l of the potentiometer wire. The e.m.f. E will be given by:

- (1) $\frac{LE_0r}{lr_1}$
- (2) $\frac{E_0r}{(r+r_1)} \cdot \frac{l}{L}$
- (3) $\frac{E_0l}{L}$
- (4) $\frac{LE_0r}{(r+r_1)l}$

Solution: (2)

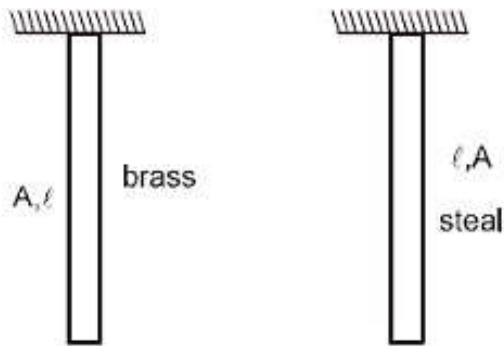
$$K = \text{potential gradient} = \left(\frac{E_0r}{r+r_1}\right) \frac{1}{L}$$

$$\text{So } E = K\ell = \frac{E_0r\ell}{(r+r_1)L}$$

133. The Young's modulus of steel is twice that of brass. Two wires of same length and of same area of cross section, one of steel and another of brass are suspended from the same roof. If we want the lower ends of the wires to be at the same level, then the weights added to the steel and brass wires must be in the ration of:

- (1) 1 : 2
- (2) 2 : 1
- (3) 4 : 1
- (4) 1 : 1

Solution: (2)



$$Y = \frac{W}{A} \cdot \frac{\ell}{\Delta \ell}$$

$$\text{So } \Delta \ell = \frac{W\ell}{AY}$$

$$\Delta e_1 = \Delta e_2 \quad \frac{w_1 \ell}{AY_1} = \frac{w_2 \ell}{AY_2}$$

$$\frac{w_1}{w_2} = \frac{Y_1}{Y_2} = 2$$

134. The input signal given to a CE amplifier having a voltage gain of 150 is $V_i = 2 \cos\left(15t + \frac{\pi}{3}\right)$. The corresponding output signal will be:

- (1) $300 \cos\left(15t + \frac{\pi}{3}\right)$
- (2) $75 \cos\left(15t + \frac{2\pi}{3}\right)$
- (3) $2 \cos\left(15t + \frac{5\pi}{6}\right)$
- (4) $300 \cos\left(15t + \frac{4\pi}{3}\right)$

Solution: (4)

CE amplifier causes phase difference of $\pi (= 180^\circ)$ so $V_{\text{out}} = 300 \cos\left(15t + \frac{\pi}{3} + \pi\right)$

135. An automobile moves on a road with a speed of 54 km h^{-1} . The radius of its wheels is 0.45 m and the moment of inertia of the wheel about its axis of rotation is 3 kg m^2 . If the vehicle is brought to rest in 15 s , the magnitude of average torque transmitted by its brakes to the wheel is:

- (1) $6.66 \text{ kg m}^2 \text{ s}^{-2}$
- (2) $8.58 \text{ kg m}^2 \text{ s}^{-2}$
- (3) $10.86 \text{ kg m}^2 \text{ s}^{-2}$
- (4) $2.86 \text{ kg m}^2 \text{ s}^{-2}$

Solution: (1)

$$\omega_i = \frac{15}{0.45} = \frac{100}{3} \quad \omega_f = 0$$

$$\omega_f = \omega_i + \alpha t$$

$$0 = \frac{100}{3} + (-\alpha)(15)$$

$$\alpha = \frac{100}{45}$$

$$\tau = (I)(\alpha) = 3 \times \frac{100}{45} = 6.66 \text{ N. M}$$

Chemistry

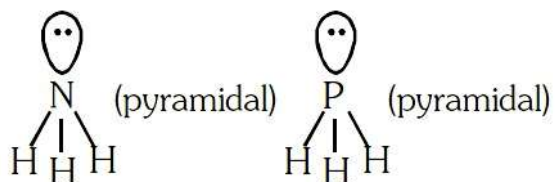
136. In which of the following pairs, both the species are not isostructural?

- (1) $\text{XeF}_4, \text{XeO}_4$
- (2) $\text{SiCl}_4, \text{PCl}_4^+$
- (3) $\text{SiCl}_4, \text{PCl}_4^+$
- (4) NH_3, PH_3

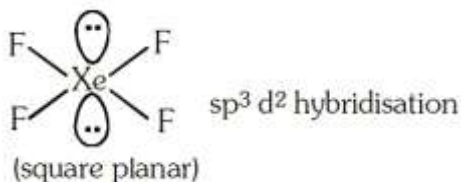
Solution: (1)

i. Hybridization of NH_3 [$\sigma = 3, \text{lp} = 1$]

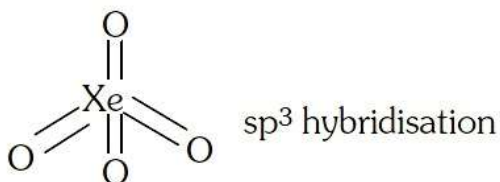
sp^3 geometry : Tetrahedral



ii. Structures of XeF_4 is square planar.

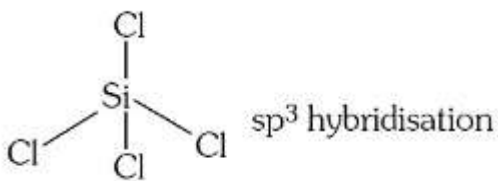


Structure of XeO_4 is tetrahedral

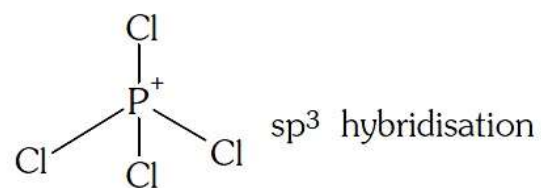


So XeF_4 and XeO_4 are not isostructural.

iii. Structure of SiCl_4 is tetrahedral.

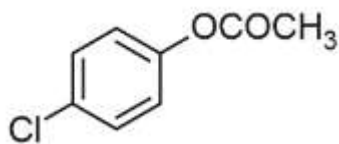


Structure of PCl_4^+ is tetrahedral.

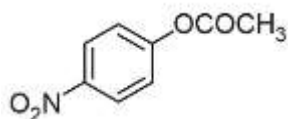


137. Which one of the following esters gets hydrolyzed most easily under alkaline conditions?

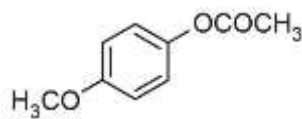
(1)



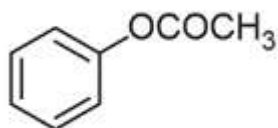
(2)



(3)



(4)



Solution: (2)

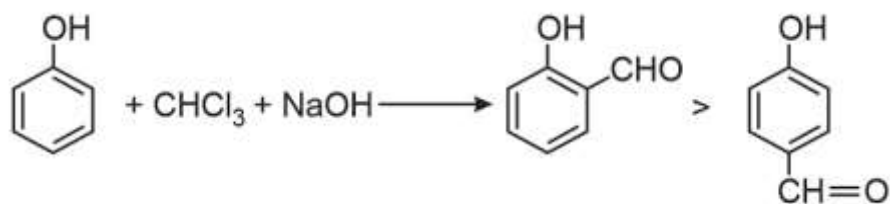
Solution: EWG (Electron withdrawing group) increases reactivity towards nucleophilic substitution reaction. $-\text{NO}_2$ is strong electron withdrawing group.

138. Reaction of phenol with chloroform in presence of dilute sodium hydroxide finally introduces which one of the following functional group?

- (1) $-\text{CHO}$
- (2) $-\text{CH}_2\text{Cl}$
- (3) $-\text{COOH}$
- (4) $-\text{CHCl}_2$

Solution: (1)

Reimer Tieman reaction



139. Which of the following reaction(s) can be used for the preparation of alkyl halides?

- I. $\text{CH}_3\text{CH}_2\text{OH} + \text{HCl} \xrightarrow{\text{Anhyd. ZnCl}_2}$
 II. $\text{CH}_3\text{CH}_2\text{OH} + \text{HCl} \rightarrow$
 III. $(\text{CH}_3)_3\text{COH} + \text{HCl} \rightarrow$
 IV. $(\text{CH}_3)_2\text{CHOH} + \text{HCl} \xrightarrow{\text{Anhyd. ZnCl}_2}$
- (1) III and IV only
 (2) I, III and IV only
 (3) I and II only
 (4) IV only

Solution: (2)

I and IV can be used due to presence of anhydrous ZnCl_2 (III) gives alkyl halide due to formation of more stable carbocation.

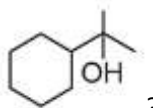
140. In an $\text{S}_{\text{N}}1$ reaction on chiral centres, there is:

- (1) 100% inversion
 (2) 100% racemization
 (3) Inversion more than retention leading to partial racemization
 (4) 100% retention

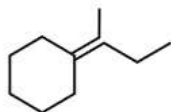
Solution: (3)

$\text{S}_{\text{N}}1$ reaction gives racemic mixture with slight predominance of that isomer which corresponds to inversion because $\text{S}_{\text{N}}1$ also depends upon the degree of 'shielding' of the front side of the reacting carbon.

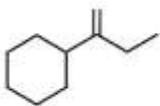
141. Which of the following is not the product of dehydration of



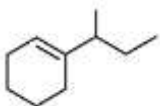
(1)



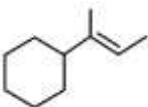
(2)



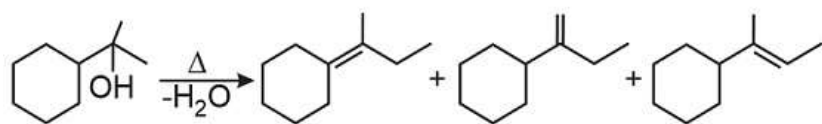
(3)



(4)



Solution: (3)

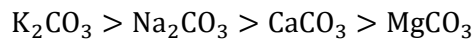


142. On heating which of the following releases CO_2 most easily?

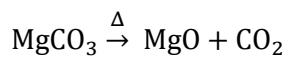
- (1) CaCO_3
- (2) K_2CO_3
- (3) Na_2CO_3
- (4) MgCO_3

Solution: (4)

Thermal stability order

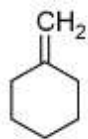


Therefore MgCO_3 releases CO_2 most easily.

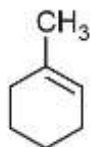


143. In the reaction with HCl , an alkene reacts in accordance with the Markovnikov's rule, to give a product 1-chloro-1-methylcyclohexane. The possible reaction alkene is:

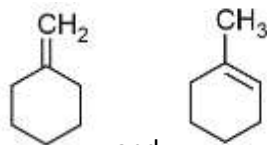
(1)



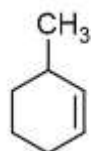
(2)



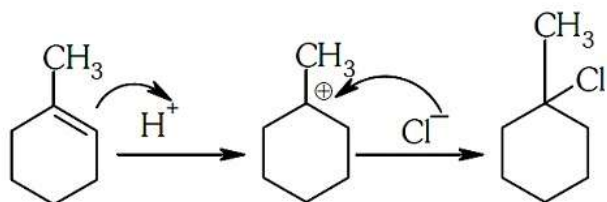
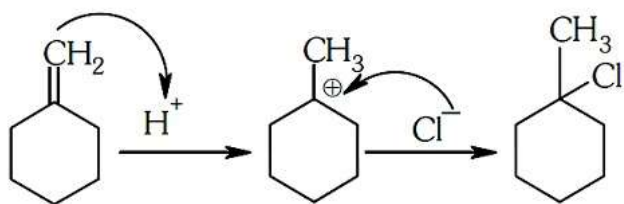
(3)



(4)



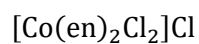
Solution: (3)



144. Number of possible isomers for the complex $[\text{Co}(\text{en})_2\text{Cl}_2]\text{Cl}$ will be: (en = ethylene diamine)

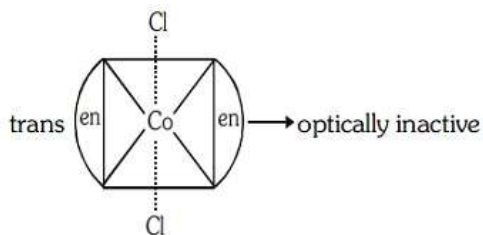
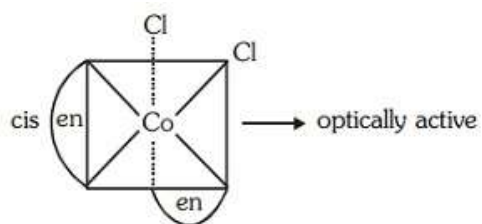
- (1) 4
- (2) 2
- (3) 1
- (4) 3

Solution: (4)



Possible isomers

(i) Geometrical isomers



(ii) In trans form plane of symmetry present, so trans form is optically inactive but cis is optically active.

Total number of stereoisomer = 2 + 1 = 3

145. A gas such as carbon monoxide would be most likely to obey the ideal gas law at:

- (1) Low temperatures and low pressures
- (2) High temperatures and low pressures
- (3) Low temperatures and high pressures
- (4) High temperatures and high pressures

Solution: (2)

Real gases show ideal gas behaviour at high temperatures and low pressures.

146. If Avogadro number N_A , is changed from $6.022 \times 10^{23} \text{ mol}^{-1}$ to $6.022 \times 10^{20} \text{ mol}^{-1}$, this would change:

- (1) The ratio of elements to each other in compound.
- (2) The definition of mass in units of grams
- (3) The mass of one mole of carbon
- (4) The ratio of chemical species to each other in a balanced equation.

Solution: (3)

\therefore Mass of 1 mol (6.022×10^{23} atoms) of carbon = 12g

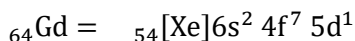
If Avogadro Number (N_A) is changed then mass of 1 mol (6.022×10^{20} atom) of carbon

$$= \frac{12 \times 6.022 \times 10^{20}}{6.022 \times 10^{23}} = 12 \times 10^{-3} \text{ g}$$

147. Gadolinium belongs of 4f series. Its atomic number is 64. Which of the following is the correct electronic configuration of gadolinium?

- (1) $[\text{Xe}]4f^7 5d^1 6s^2$
- (2) $[\text{Xe}]4f^8 6d^2$
- (3) $[\text{Xe}]4f^9 5s^1$
- (4) $[\text{Xe}]4f^7 5d^1 6s^2$

Solution: (4)



148. What is the pH of the resulting solution when equal volumes of 0.1 m NaOH and 0.01 M HCl are mixed?

- (1) 1.04
- (2) 12.65
- (3) 2.0
- (4) 7.0

Solution: (2)

$$N_1 V_1 - N_2 V_2 = N. V.$$

$$0.1 \times 1 - 0.01 \times 1 = N \times 2$$

$$[\text{OH}^-] = N_R = 0. \frac{09}{2} = 0.045 \text{ N}$$

$$\text{pOH} = -\log (0.045) = 1.35$$

$$\therefore \text{pH} = 14 - \text{pOH} = 14 - 1.35 = 12.65$$

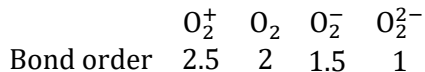
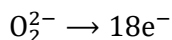
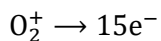
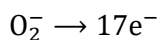
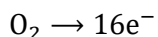
149. Decreasing order of stability of O_2 , O_2^- , O_2^+ and O_2^{2-} is:

- (1) $\text{O}_2^- > \text{O}_2^{2-} > \text{O}_2^+ > \text{O}_2$
- (2) $\text{O}_2^+ > \text{O}_2 > \text{O}_2^- > \text{O}_2^{2-}$
- (3) $\text{O}_2^{2-} > \text{O}_2^- > \text{O}_2 > \text{O}_2^+$
- (4) $\text{O}_2 > \text{O}_2^+ > \text{O}_2^{2-} > \text{O}_2^-$

Solution: (2)

Given species: O_2 , O_2^- , O_2^+ , O_2^{2-}

Total number of electrons



Stability \times Bond order

Stability order $[\text{O}_2^+ > \text{O}_2 > \text{O}_2^- > \text{O}_2^{2-}]$

150. The correct statement regarding defects in crystalline solids is :

- (1) Frenkel defect is found in halides of alkaline metals
- (2) Schottky defects have no effect on the density of crystalline solids
- (3) Frenkel defects decrease the density of crystalline solids
- (4) Frenkel defect is a dislocation defect

Solution: (4)

Frenkel defect is a dislocation defect.

151. Which of the following statements is not correct for a nucleophile?

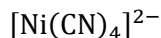
- (1) Nucleophiles are not electron seeking
- (2) Nucleophile is a Lewis acid
- (3) Ammonia is a nucleophile
- (4) Nucleophiles attack low e^- density sites

Solution: (2) Reason: Nucleophiles are electron rich species so act as Lewis base.

152. The hybridization involved in complex $[\text{Ni}(\text{CN})_4]^{2-}$ is: (Atomic number of Ni = 28)

- (1) d^2sp^3
- (2) dsp^2
- (3) sp^3
- (4) d^2sp^2

Solution: (2)



Oxidation state of Ni is +2

$$x - 4 = 2$$

$$x = +2$$

153. The stability of +1 oxidation state among Al, Ga, In and Tl increases in the sequence:

- (1) $In < Tl < Ga < Al$
- (2) $Ga < In < Al < Tl$
- (3) $Al < Ga < In < Tl$
- (4) $Tl < In < Ga < Al$

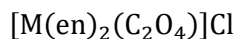
Solution: (3)

Stability of +1 oxidation state due to inert pair effect $Tl < In < Ga < Al$.

154. The sum of coordination number and oxidation number of metal M in the complex $[M(en)_2(C_2O_4)]Cl$ (Where en is ethylenediamine) is:

- (1) 8
- (2) 9
- (3) 6
- (4) 7

Solution: (2)



Oxidation state of M = +3

Coordination number of M = 6

Sum of oxidation state + Coordination number = $3 + 6 = 9$

155. Which of the statements given below is incorrect?

- (1) OF_2 is an oxide of fluorine.
- (2) Cl_2O_7 is an anhydride of perchloric acid
- (3) O_3 molecule is bent.
- (4) ONF is isoelectronic with O_2N^-

Solution: (1)

i. No. of electron in ONF = 24

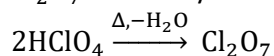
No. of electron in $\text{NO}_2^- = 24$

Both are isoelectronic.

ii. OF_2 is a fluoride of oxygen not oxide of fluorine because EN of fluorine is more than oxygen.

OF_2 = Oxygen difluoride

iii. Cl_2O_7 is an anhydride of perchloric acid.



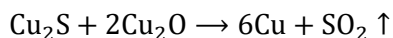
iv. O_3 molecules is bent shape.

156. In the extraction of copper from its sulphide ore, the metal is finally obtained by the reduction of cuprous oxide with:

- (1) Sulphur dioxide
- (2) Iron (II) sulphide
- (3) Carbon monoxide
- (4) Copper (I) sulphide

Solution: (4)

Self reduction



157. Which one of the following pairs of solution is not an acidic buffer?

- (1) H_3PO_4 and Na_3PO_4
- (2) HClO_4 and NaClO_4
- (3) CH_3COOH and CH_3COONa
- (4) H_2CO_3 and Na_2CO_3

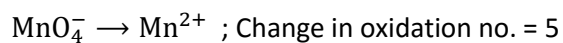
Solution: (2)

Strong acid with its salt can not form buffer solution. HClO_4 and NaClO_4 cannot act as an acidic buffer.

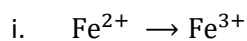
158. Assuming complete ionization, same moles of which of the following compounds will require the least amount of acidified KMnO_4 for complete oxidation?

- (1) $\text{Fe}(\text{NO}_2)_2$
- (2) FeSO_4
- (3) FeSO_3
- (4) FeSO_3

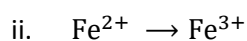
Solution: (2)



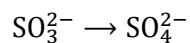
In option,



Change in oxidation no. = 1

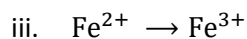


Change in oxidation no. = 1

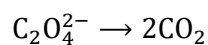


Change in oxidation no. = 2

$$= 1 + 2 = 3$$

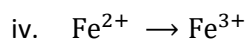


Change in oxidation no. = 1

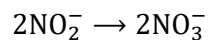


Change in oxidation no. = 2

$$= 1 + 2 = 3$$



Change in oxidation no. = 1



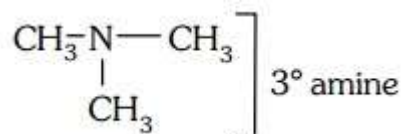
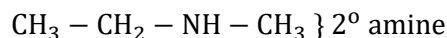
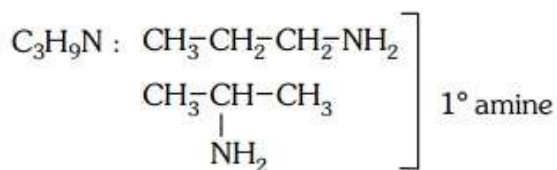
Change in oxidation no. = 4

$$= 1 + 4 = 5$$

159. The number of structural isomers possible from the molecular formula $\text{C}_3\text{H}_9\text{N}$ is:

- (1) 3
- (2) 4
- (3) 5
- (4) 2

Solution: (2)



160. 20.0 g of a magnesium carbonate sample decomposes on heating to give carbon dioxide and 8.0 g magnesium oxide. What will be the percentage purity of magnesium carbonate in the sample?

(Atomic weight: Mg = 24)

- (1) 84
- (2) 75
- (3) 96
- (4) 60

Solution: (1)



$$\text{Moles of MgCO}_3 = \frac{20}{84} = 0.238 \text{ mol}$$

From above equation.

1 mole MgCO_3 gives 1 mole MgO

\therefore 0.238 mole MgCO_3 will give 0.238 mole MgO

$$= 0.238 \times 40 \text{ g} = 9.523 \text{ g MgO}$$

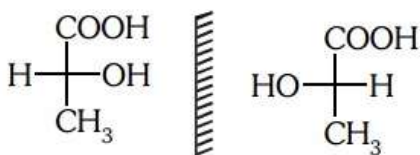
Practical yield of $\text{MgO} = 8 \text{ g MgO}$

$$\therefore \% \text{ Purity} = \frac{8}{9.523} \times 100 = 84\%$$

161. Two possible stereo-structures of $\text{CH}_3\text{CHOH} \cdot \text{COOH}$, which are optically active, are called:

- (1) Mesomers
- (2) Diastereomers
- (3) Atropisomers
- (4) Enantiomers

Solution: (4)

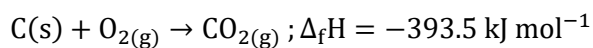


Both are enantiomers.

162. The heat of combustion of carbon to CO_2 is -393.5 kJ/mol . The heat released upon formation of 35.2 g of CO_2 from carbon and oxygen gas is:

- (1) -3.15 kJ
- (2) -315 kJ
- (3) $+315 \text{ kJ}$
- (4) -630 kJ

Solution: (2) Formation of CO_2 from carbon and dioxygen gas can be represented as



(1 mole = 44 g)

Heat released on formation of 44 g CO_2

$$= -393.5 \text{ kJ mol}^{-1}$$

$$= \frac{-393.5 \text{ kJ mol}^{-1}}{44 \text{ g}} \times 35.2 \text{ g}$$

$$= -315 \text{ kJ}$$

163. The rate constant of the reaction $\text{A} \rightarrow \text{B}$ is $0.6 \times 10^{-3} \text{ mole per second}$. If the concentration of A is 5M , then concentration of B after 20 minutes is:

- (1) 0.72 M
- (2) 1.08 M
- (3) 3.60 M
- (4) 0.36 M

Solution: (1)

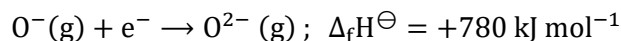
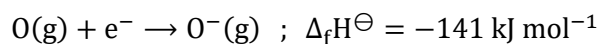
For zero order reaction:

$$x = K \cdot t$$

$$= 0.6 \times 10^{-3} \times 20 \times 60$$

$$x = 0.72 \text{ M}$$

164. The formation of the oxide ion, $O^{2-}(g)$, from oxygen atom requires first an exothermic and then an endothermic step as shown in below:



Thus process of formation of O^{2-} in gas phase is unfavourable though O^{2-} is isoelectronic with neon. It is due to the fact that,

- (1) Addition of electron in oxygen results in larger size of the ion.
- (2) Electron repulsion outweighs the stability gained by achieving noble gas configuration.
- (3) O^{-} ion has comparatively smaller size than oxygen atom.
- (4) Oxygen is more electronegative.

Solution: (2)

165. What is the mass of the precipitate formed when 50 mL of 16.9% solution of $AgNO_3$ is mixed with 50 mL of 5.8% NaCl solution?

(Ag = 107.8, N = 14, O = 16, Na = 23, Cl = 35.5)

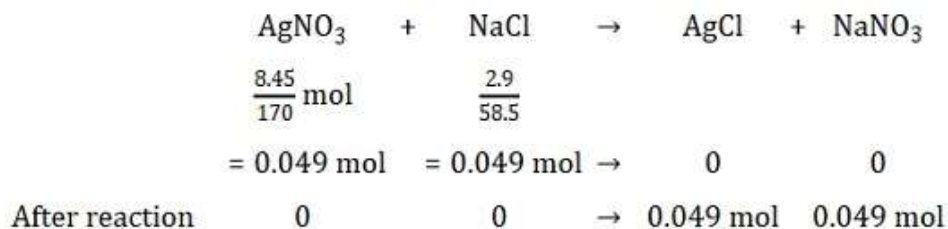
- (1) 14 g
- (2) 28 g
- (3) 3.5 g
- (4) 7 g

Solution: (4) 16.9 g $AgNO_3$ is present in 100 mL solution.

\therefore 8.45 g $AgNO_3$ is present in 50 mL solution

5.8 g NaCl is present in 100 mL solution

\therefore 2.9 g NaCl is present in 50 mL solution



Mass of AgCl precipitated

$$= 0.049 \times 143.5 \text{ g}$$

$$= 7 \text{ g AgCl}$$

166. Which is the correct order of increasing energy of the listed orbitals in the atom of titanium?

(Atomic No. Z = 22)

- (1) 3s 3p 4s 3d

- (2) 3s 4s 3p 3d
- (3) 4s 3s 3p 3d
- (4) 3s 3p 3s 4d

Solution: (1) $\text{Ti}(22) = 1s^2 2s^2 2p^6 3s^2 3p^6 4s^2 3d^2$

Order of energy is 3s 3p 4s 3d

167. Reaction of a carbonyl compound with one of the following reagents involves nucleophilic addition followed by elimination of water. The reagent is:

- (1) Sodium hydrogen sulphite
- (2) A Grignard reagent
- (3) Hydrazine in presence of feebly acidic solution
- (4) Hydrocyanic acid

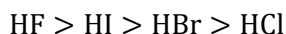
Solution: (3) With Ammonia derivation carbonyl compounds give addition followed by elimination reaction. Slightly acidic medium will generate a nucleophilic centre for weak base like ammonia derivatives.

168. The variation of the boiling points of the hydrogen halides is in the order $\text{HF} > \text{HI} > \text{HBr} > \text{HCl}$. What explains the higher boiling point of hydrogen fluoride?

- (1) The effect of nuclear shielding is much reduced in fluorine which polarizes the HF molecule.
- (2) The electronegativity of fluorine is much higher than for other elements in the group.
- (3) There is strong hydrogen bonding between HF molecules.
- (4) The bond energy of HF molecules is greater than in other hydrogen halides.

Solution: (3)

Due to strong H-bonding in HF molecule, boiling point is highest for HF.



169. The name of complex ion, $[\text{Fe}(\text{CN})_6]^{3-}$ is :

- (1) Hexacyanidoferrate (III) ion
- (2) Hexacyanoiron (III) ion
- (3) Hexacyanito ferrate (III) ion
- (4) Tricyanoferrate (III) ion

Solution: (1)

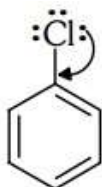


Hexacyanidoferrate (III) ion

170. Method by which Aniline cannot be prepared is:

- (1) Potassium salt of phthalimide treated with chlorobenzene followed by hydrolysis with aqueous NaOH solution.
- (2) Hydrolysis of phenylisocyanide with acidic solution
- (3) Degradation of benzamide with bromine in alkaline solution
- (4) Reduction of nitrobenzene with H_2/Pd in ethanol

Solution: (1)



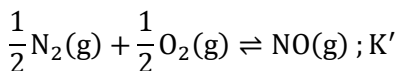
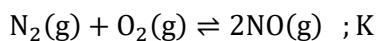
Due to resonance C – Cl bond acquires double bond character.

171. If the equilibrium constant for $\text{N}_2(\text{g}) + \text{O}_2(\text{g}) \rightleftharpoons 2\text{NO}(\text{g})$ is K, the equilibrium constant for $\frac{1}{2}\text{N}_2(\text{g}) + \frac{1}{2}\text{O}_2(\text{g}) \rightleftharpoons \text{NO}(\text{g})$

will be:

- (1) K^2
- (2) $K^{\frac{1}{2}}$
- (3) $\frac{1}{2}K$
- (4) K

Solution: (2)



$$K = \frac{[\text{NO}]^2}{[\text{N}_2][\text{O}_2]}$$

$$K' = \frac{\text{NO}}{[\text{N}_2]^{1/2}[\text{O}_2]^{1/2}}$$

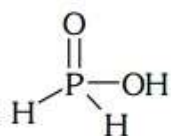
$$\therefore K' = \sqrt{K}$$

172. Strong reducing behaviour of H_3PO_2 is due to:

- (1) Presence of two –OH groups and one P–H bond
- (2) Presence of one –OH group and two P – H bonds
- (3) High electron gain enthalpy of phosphorus
- (4) High oxidation state of phosphorus

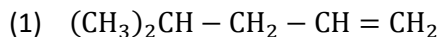
Solution: (2) Strong reducing behaviour of H_3PO_2

All oxy-acid of phosphorus which contain P – H bond act as reductant.

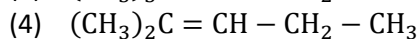
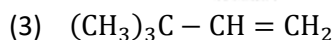
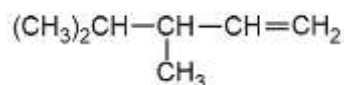


Presence of one –OH group and two P – H bonds.

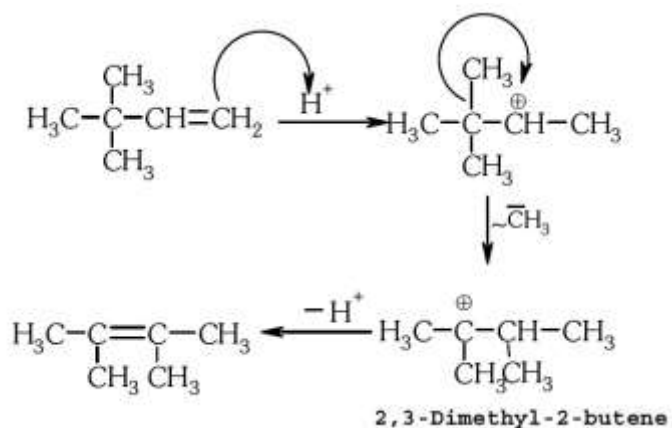
173. 2,3-Dimethyl-2-butene can be prepared by heating which of the following compounds with a strong acid?



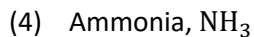
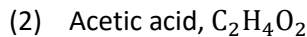
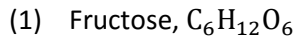
(2) D



Solution: (3)



174. Aqueous solution of which of the following compounds is the best conductor of electric current?



Solution: (3) Aqueous solution of HCl is the best conductor of electric current because HCl is strong acid, so it dissociates completely into ions.

175. The vacant space in bcc lattice unit cell is:

(1) 32%

(2) 26%

(3) 48%

(4) 23%

Solution: (1) Packing efficiency in bcc lattice = 68%

\therefore Vacant space in bcc lattice = $100 - 68 = 32\%$

176. What is mole fraction of the solute in a 1.00 m aqueous solution?

- (1) 0.0177
- (2) 0.177
- (3) 1.770
- (4) 0.0354

Solution: (1)

1.0 m solution means 1 mole solute is present in 1000 g water.

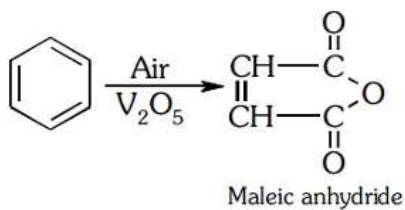
$$n_{\text{H}_2\text{O}} = 55.5 \text{ mol H}_2\text{O}$$

$$X_{\text{Solute}} = \frac{n_{\text{Solute}}}{n_{\text{Solute}} + n_{\text{H}_2\text{O}}} = \frac{1}{1 + 55.5} = 0.0177$$

177. The oxidation of benzene by V_2O_5 in the presence of air produces:

- (1) Benzaldehyde
- (2) Benzoic anhydride
- (3) Maleic anhydride
- (4) Benzoic acid

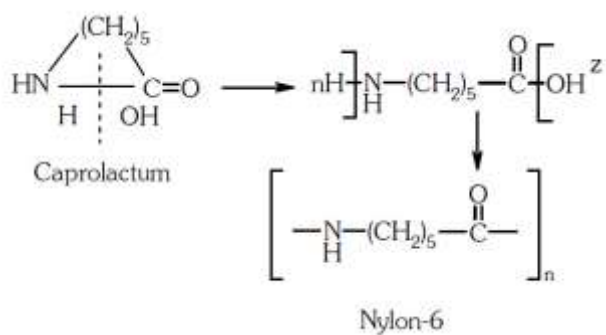
Solution: (3)



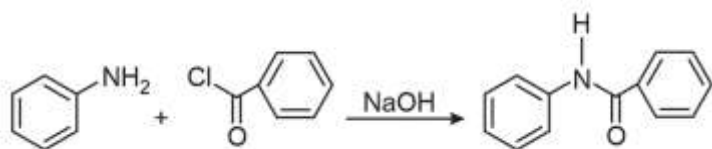
178. Caprolactum is used for the manufacture of:

- (1) Nylon-6,6
- (2) Nylon-6
- (3) Teflon
- (4) Terylene

Solution: (2)



179. The following reaction



Is known by the name:

- (1) Schotten-Baumen reaction
- (2) Friedel-Craft's reaction
- (3) Perkin's reaction
- (4) Acetylation reaction

Solution: (1)

Benzoylation of aniline is an example of Schotten-Bauman reaction.

180. The number of water molecules is maximum in:

- (1) 18 moles of water
- (2) 18 molecules of water
- (3) 1.8 gram of water
- (4) 18 gram of water

Solution: (1)

$$\therefore 1 \text{ mole water} = 6.02 \times 10^{23} \text{ molecules}$$

$$\therefore 18 \text{ mole water} = 18 \times 6.02 \times 10^{23} \text{ molecules}$$

So, 18 mole water has maximum number of molecules.