

SUMMATIVE ASSESSMENT-II

SUBJECT : SCIENCE

CLASS : VIIIth

Time : 3 hrs.

M.M. : 90

Paper is divided in two parts, PART-A and PART-B

In PART-A: Ques.1 to 3 are Very Short Answer Type and carry 1 mark each.

Ques. 4 to 7 are Short Answer Type carry 2 marks each.

Ques. 8 to 19 are Long Answer Type carry 3 marks each.

Ques. 20 to 24 are Very Long Answer Type and carry 5 marks each.

PART-B is Activity based Multiple Choice Questions carries 1 mark each

PART-A

- Q.1 Define 1 light year?
- Q.2 Which main air pollutant is released by refrigerators and air conditioners?
- Q.3 Name four air pollutants produced by burning of fossil fuels?
- Q.4 A force of 150N is applied to an object of area 5m². Calculate the pressure.
- Q.5 What are ultrasonic sounds? Name 2 animals that produce ultrasonic sounds?
- Q.6 (a) What is meant by chemical effects of electric current?
(b) List 2 chemical effects of electric current?
- Q.7 Draw a ray diagram to formation of image of a point object in a plane mirror.
- Q.8 How is the sex determined in human beings ? Explain with the help of a flow chart.
- Q.9 Explain why (a) heavy truck is fitted with six to eight wheels ? (b) a sharp knife cut objects more effectively than a blunt knife ?
- Q.10 (a) Define rolling friction and sliding friction?
(b) Explain why rolling friction is less than sliding friction?
- Q.11 (a) What is meant by streamlined shape?
(b) Why the bodies of ships and boats are streamlined?
- Q.12 (a) If a simple pendulum makes 30 oscillations in 5 seconds. What is its frequency?
(b) Define - Loudness and Frequency.

- Q.13 (a) Define electrolysis with its 2 applications.
(b) Explain why iron objects are electroplated in chromium?
- Q.14 How do you protect yourself from lightning (a) inside the home (b) outside ? (two measures each)
- Q.15 (a) Draw a well labelled diagram of a human eye?
(b) What is meant by dispersion of light?
- Q.16 In a human eye, what is the function of the following-
(a) Cornea (b) Iris (c) Retina
- Q.17 Write any 3 differences between meteors and meteorites?
- Q.18 What is the importance of ozone layer in atmosphere and explain 2 damaging effects of ozone layer depletion?
- Q.19 Explain the terms (a) biological magnification (b) global warming (c) acid rain.
- Q.20 What is puberty ? What happens at this stage of life ? (2+3)

OR

- (a) What are hormones ?
(b) How do hormones work ?
(c) Give the name and functions of hormone secreted by pituitary gland. (1+2+2)
- Q.21 What is force ? Explain the four effects, a force can produce, giving relevant examples.

OR

“Friction is a necessary evil” Explain by giving 3 advantages and 2 disadvantages of friction.

- Q.22 (a) Draw a well labelled diagram of human ear.
(b) Give one point of difference between noise and music. (3+2)

OR

What is electroplating? Describe the electroplating of copper on an iron spoon with diagram?

- Q.23 What is meant by following phases of the moon:
(a) new moon (b) crescent moon (c) first quarter (d) gibbous moon (e) full moon

OR

Name the following planet(s):

- (a) 2 planets which can be seen by naked eyes.
- (b) smallest and biggest planets of solar system.
- (c) nearest and farthest planets of solar system.
- (d) Whose period of revolution is minimum.
- (e) Whose period of rotation is maximum.

- Q.24 (a) What is a volcano ? How do volcanoes cause earthquake ?
- (b) List any 2 damaging effects of earthquake ?
- (c) What is richter scale ?

OR

- (a) Explain any 3 harmful effects of water pollution.
- (b) Write any 4 methods you suggest to control water pollution.

PART-B

Q.25 Which kind of force works when the straw rubbed with paper attracts the suspended straw.

- | | | |
|------------------------|------------------------|--------|
| a) Magnetic force | b) Electrostatic force | |
| c) Gravitational force | d) Muscular force | [] |

Q.26 Why the piece of card does not fall while the glass tumbler is inverted and full of water.

- a) the upward atmospheric pressure is greater than downward pressure of water on card.
 - b) the upward atmospheric pressure is less than downward pressure of water on card
 - c) both of these
 - d) none of these
- []

Q.27 By placing pencils as rollers in the activity _____

- | | | |
|--------------------------|----------------------|--------|
| a) reduces friction | b) increase friction | |
| c) increase interlocking | d) all of these | [] |

Q.28 Friction between 2 surfaces is due to its

- | | | |
|-----------------|---------------|--------|
| a) overlapping | b) overriding | |
| c) interlocking | d) interface | [] |

Q.29 When we stop the ruler from vibrating by touching it with our fingers ,what will happen?

- | | | |
|----------------------------------|------------------------------|--------|
| a) it also stops producing sound | b) it starts producing sound | |
| c) more sound is produced | d) less sound is produced | [] |

Q.30 Sound is produced by a body.

- | | | |
|---------------|------------------|--------|
| a) vibrating | b) still | |
| c) stationary | d) none of these | [] |

Q.31 If the rubber bands are very much stretched _____ sound is produced.

- | | | |
|---|------------------|--------|
| a) low pitched | b) high pitched | |
| c) some times low and some times high pitched | d) none of these | [] |

Q.32 Distilled water is a _____ conductor of electricity.

- | | | | | |
|---------|-----------|---------|---------|--------|
| a) good | b) better | c) poor | d) best | [] |
|---------|-----------|---------|---------|--------|

Q.33 Addition of salts, acids or bases make distilled water _____ conductor of electricity.

- | | | |
|--|------------------|--------|
| a) good | b) poor | |
| c) some times good and some times poor | d) none of these | [] |

Q.34 Addition of _____ makes the distilled water a good conductor of electricity

- | | | | | |
|------------|------------|-------------|--------------------------------|--------|
| a) glucose | b) alcohol | c) kerosene | d) dil H_2SO_4 | [] |
|------------|------------|-------------|--------------------------------|--------|

Q.35 The electric charge on a glass rod when it is rubbed with a silk cloth is _____

- | | | | | |
|-------------|-------------|------------|------------------|--------|
| a) positive | b) negative | c) neutral | d) none of these | [] |
|-------------|-------------|------------|------------------|--------|

Q.36 Like charges _____ each other.

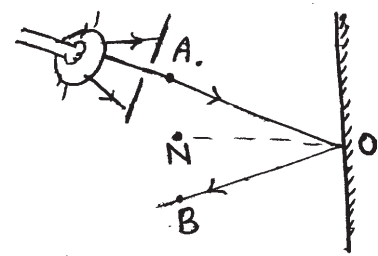
- | | | | | |
|----------|------------|--------------|------------------|--------|
| a) repel | b) attract | c) move near | d) none of these | [] |
|----------|------------|--------------|------------------|--------|

Q.37 Charged glass rod and ebonite rod each other.

- | | | | | |
|----------|------------|--------------|------------------|--------|
| a) repel | b) attract | c) move away | d) none of these | [] |
|----------|------------|--------------|------------------|--------|

- Q.38 The comb is said to be when it is rubbed against dry hair as it acquire electric charge.
- | | | |
|-------------------------|------------------|--------|
| a) electrically charged | b) discharged | |
| c) uncharged | d) none of these | [] |

- Q.39 In this activity Ray OB is called.
- | | | |
|------------------|------------------|--------|
| a) Incident ray | b) Normal | |
| c) Reflected ray | d) none of these | [] |



- Q.40 In the activity shown above, $\angle AON$ and $\angle BON$ are
- | | | |
|------------------------------|------------------------------|--------|
| a) $\angle AON > \angle BON$ | b) $\angle AON = \angle BON$ | |
| c) $\angle AON < \angle BON$ | d) none | [] |

- Q.41 Blind spot is found _____
- | | | | | |
|--------------|------------|------------|-------------|--------|
| a) on retina | b) in iris | c) on lens | d) on pupil | [] |
|--------------|------------|------------|-------------|--------|

- Q.42 The beautiful patterns that we obtain in kaleidoscope are because of _____ of light.
- | | | |
|------------------------|---------------|--------|
| a) spectrum | b) dispersion | |
| c) multiple reflection | d) refraction | [] |