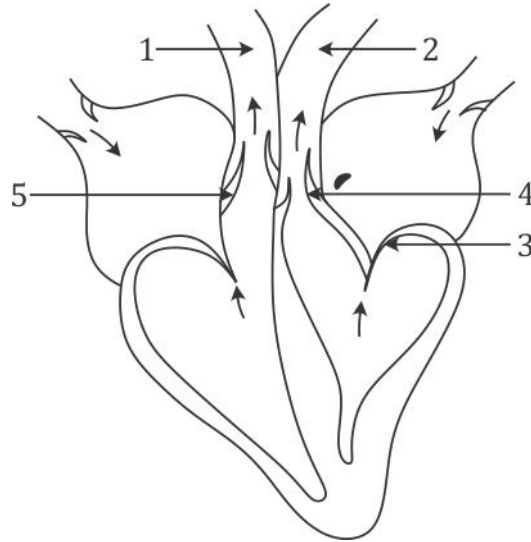


Question 7

(a) The diagram below represents the human heart in one phase of its function. Study the diagram carefully and answer the questions that follow:



- (i) Name the phase.
- (ii) Which part of the heart is contracting in this phase? Give a reason to support your answer.
- (iii) Name the parts labelled 1 to 4.
- (iv) What type of blood flows through '2'?
- (v) State the function of the part numbered '5'.
- (vi) Name the membrane that covers the heart.

[5]

(b) Explain the following terms:

- (i) Greenhouse effect
- (ii) Turgor pressure
- (iii) Selective reabsorption
- (iv) Natality
- (v) Pulse