

Maharashtra State Board

Class VIII Science

Sample Paper – 3

Time: 2 hrs

Max. Marks: 60

Note:

1. All questions are compulsory.
2. The marks related to the question are given in brackets.

I. Choose the correct alternative:

[15]

1. Which of the following is a magnetic material?
(a) Cobalt
(b) Nickel
(c) Plastic
(d) Rubber
2. If the surface area is kept constant and the applied force is doubled, then the pressure
(a) Becomes double
(b) Remains the same
(c) Becomes four times
(d) Becomes half
3. Throat muscles become rigid and contracted in
(a) AIDS
(b) Diarrhoea
(c) Rabies
(d) Typhoid
4. When quicklime is added to water, _____ is formed.
(a) Calcium oxide
(b) Calcium hydroxide
(c) Calcium sulphate
(d) Calcium carbonate
5. _____ is planted by making furrows in the soil.
(a) Rice
(b) Wheat
(c) Bajra
(d) Sugarcane

- 6.** Asteroids revolve around the Sun between the orbits of
- (a) Mars and Jupiter
 - (b) Jupiter and Saturn
 - (c) Earth and Mars
 - (d) Venus and Earth
- 7.** The two mirrors in a periscope are placed
- (a) Parallel to each other
 - (b) Perpendicular to each other
 - (c) One above the other
 - (d) None of the above
- 8.** The treaty at the Earth Summit emphasises the need for nurturing
- (a) International trade
 - (b) Peace and harmony
 - (c) Biodiversity
 - (d) Biotechnology
- 9.** The nucleus of an atom contains 11 protons and 12 neutrons. The atomic mass number of the element is
- (a) 11
 - (b) 23
 - (c) 22
 - (d) 24
- 10.** Which of the following is correctly matched?
- (a) Oyster – Diamond
 - (b) Sheep – Cotton
 - (c) Camel – Wool
 - (d) Silkworm – Silk
- 11.** Which of the following sources of energy do not cause pollution?
- (a) Coal
 - (b) Natural gas
 - (c) Biogas
 - (d) Petroleum
- 12.** _____ is used to make germicides and explosives.
- (a) Sulphur
 - (b) Graphite
 - (c) Red phosphorus
 - (d) Silicon

13. _____ is used to obtain very low temperatures.

- (a) Helium
- (b) Argon
- (c) Neon
- (d) Xenon

14. In the diamond crystal, every carbon atom has _____ atoms of carbon at specific distances around it.

- (a) 3
- (b) 4
- (c) 5
- (d) 6

15. Laboratory apparatuses and tiles for the bathroom are made of

- (a) Kaolin
- (b) Concrete
- (c) Cement
- (d) Feldspar

II. Answer the following:

[10]

16. Why is Venus called the Morning Star and the Evening Star?

17. Complete the analogy:

- (a) Plant : Producer :: Bacteria : _____
- (b) Zoological gardens : Animals :: _____ : Plants

18. Why are ships coated with enamel paints?

19. What is dry ice? State its use.

20. List any two points on which the government is focusing to meet the energy crisis.

III. Answer the following:

[15]

21. What changes do you see in the appearance of a candle once it is lit?

22. Why is winnowing done after threshing grains?

23. What are the advantages of using a horseshoe magnet?

24. List any three uses of non-metals.

25. How is lac obtained? What is it used for?

IV. Answer the following in brief:

[20]

26.

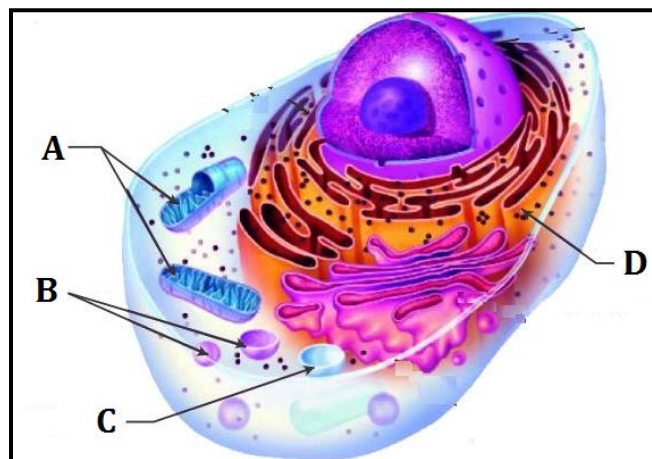
- (a) What is an artificial satellite? List any two artificial satellites launched by India.
- (b) State any two uses of artificial satellites.

27.

- (a) Why is the word **AMBULANCE** written as **Ǝ᠒NΛJUBMΛ** on an ambulance?
- (b) What is a fluorescent paint? Where is it used?

28. List the preventive measures for diarrhoea.

29. Observe the figure carefully and answer the questions based on it:



- (a) Which cell is shown in the figure—plant cell or animal cell?
- (b) Which label correctly denotes mitochondria?
- (c) State the functions of mitochondria.

30. Distinguish between

- (a) Proton and electron
- (b) Atomic number and atomic mass number