

ICSE Board
Class VI
Biology
Sample Paper – 1

Time: 2 hrs

Total Marks: 75

General Instructions:

1. All questions are **compulsory**.
 2. Questions 1 to 15 carry one mark each.
 3. Questions in 2 A and B carry one mark each.
 4. Questions in 3 A carry one mark each and B carries 5 marks.
 5. Question 4 A and B carries 5 marks each.
 6. Questions in 5 A and B carry one mark each.
 7. Questions in 6A and B carry one mark each.
 8. Question 7 A and B carry five marks each.
-

Question 1

Choose the correct answer out of the four available choices given below each question. [15]

1. Which of the following are termed as the 'protein factories' of the cell?
 - (a) Mitochondria
 - (b) Golgi complex
 - (c) Lysosomes
 - (d) Ribosomes

2. Pollination by birds is called
 - (a) Anemophily
 - (b) Ornithophily
 - (c) Entomophily
 - (d) Hydrophily

3. The ovary extends into a thin, long filament called the_____.
 - (a) Style
 - (b) Stigma
 - (c) Carpel
 - (d) Stamen

4. What is the fleshy edible part of the fruit known as?
 - (a) Epicarp
 - (b) Mesocarp
 - (c) Endocarp
 - (d) Exocarp

5. The storage cells of camel are present in
- (a) Legs
 - (b) Intestine
 - (c) Head
 - (d) Stomach
6. Which of the following is a muscular chamber where the digestive tract and the respiratory passage cross each other?
- (a) Stomach
 - (b) Oesophagus
 - (c) Pharynx
 - (d) Larynx
7. Which of the following organs separates abdominal cavity and chest cavity??
- (a) Rib cage
 - (b) Diaphragm
 - (c) Trachea
 - (d) Lungs
8. Which of the following is a healthier choice of food?



(a)



(b)



(c)



(d)

9. Dirty skin can lead to growth of itch mites, which tunnel into the skin causing _____.
- (a) Rabies
 - (b) Scabies
 - (c) Scurvy
 - (d) Pneumonia

10. Which of the following is not good for the eyes?
- (a) Eating vegetables
 - (b) Looking at the sun directly
 - (c) Washing eyes with cold water
 - (d) Taking breaks while working on computer
11. Prolonged contraction of skeletal muscles occurs in
- (a) Pneumonia
 - (b) Tetanus
 - (c) Cholera
 - (d) Typhoid
12. Hypokalemia is caused due to deficiency of _____.
- (a) Iodine
 - (b) Potassium
 - (c) Calcium
 - (d) Sodium
13. In desert plants, the leaves are modified into
- (a) Spines
 - (b) Tendrils
 - (c) Cones
 - (d) Spores
14. Animal 'X' has thick fur on its body and a thick layer of fat below its skin. These body features suggest that this animal is adapted to _____ habitat.
- (a) Aquatic
 - (b) Mountain
 - (c) Desert
 - (d) Aerial
15. Which of the following is absent in animal cells?
- (a) Plastid
 - (b) Centrosome
 - (c) Golgi apparatus
 - (d) Cytoplasm

Question 2

A. Name the following.

[5]

1. The organelle which digests old or injured parts of its own cell.
2. A thin, sticky film composed of mucous, food particles and bacteria, which develops on the surface of the teeth over a period of time.
3. The pattern or arrangement of veins on a leaf.
4. The surface of a tooth.
5. Tiny openings found on the lower side of the leaf for the exchange of gases.

B. Fill in the blanks.

[5]

1. The enzyme _____ converts maltose into glucose.
2. Frogs have _____ feet which allow them to swim in water.
3. Fertilisation results in the growth and transformation of the ovary into a _____.
4. Centrosome consists of one or two rod-like bodies called _____.
5. One complete sequence of part contraction and relaxation is called _____.

Question 3

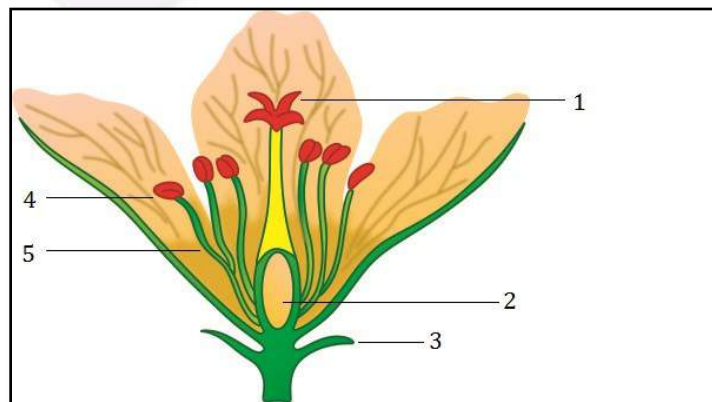
A. Match the following.

[5]

Column A	Column B
1. Lysosome	a. Frond
2. Leaves of ferns	b. Powerhouse
3. Plastid	c. Enamel
4. Tooth's surface	d. Food factory
5. Mitochondria	e. Suicidal bag

B. Observe the diagram given below and label the parts of the flower.

[5]



Question 4

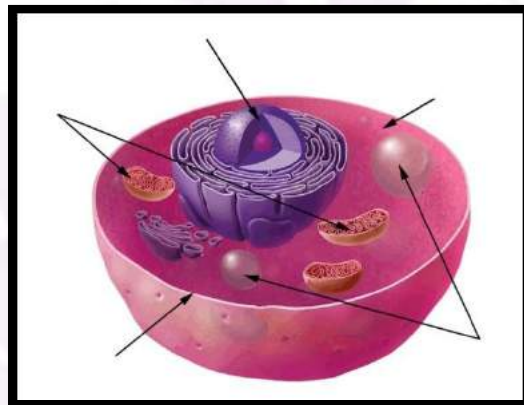
- A. Public hygiene is equally important as personal hygiene. Give a brief account on public hygiene. [5]
- B. Mention any five adaptations in camel for desert habitat. [5]

Question 5

- A.
1. How is cactus adapted to survive in a desert? [3]
 2. Why does mountain goat has strong hooves? [2]
- B. Find the odd one out. [5]
1. Typhoid, Diphtheria, Tetanus, Measles
 2. Dengue, Conjunctivitis, Chicken pox, Measles
 3. Rose, Neem, Acacia, Mango
 4. Night blindness, Beriberi, Diabetes, Pellagra
 5. Cell wall, Mitochondria, Cytoplasm, Cell membrane

Question 6

- A. Observe the given diagram and label the parts. [5]



- B. Define the following. [5]
1. Nutrition
 2. Peristalsis
 3. Petiole
 4. Unicellular organisms
 5. Enamel

Question 7

A. Answer the following in brief.

1. Explain the modifications in the leaf. [3]
2. Mention any two adaptations in birds which help them to fly in air. [2]

B. Answer the following.

1. Snow leopard shows the presence of rounded body, small ears and big feet. How do these adaptive features help the animal to survive in mountain regions? [2]
2. State the importance of transpiration. [3]

