

ICSE Board
Class VIII
Biology
Sample Paper – 1

Time: 2 hrs

Total Marks: 75

General Instructions:

1. All questions are compulsory.
2. Questions 1 to 15 carry 1 mark each.
3. Questions in 2A and 2B carry 1 mark each.
4. Questions in 3A and 3B carry 1 mark each.
5. Question 4A and 4B carry 5 marks each.
6. Question 5A and 5B carry 5 marks each.
7. Question 6A and 6B carry 5 marks each.
8. Question 7A and 7B carry 5 marks each.

Question 1

Choose the correct answer out of the four available choices given below each question. [15]

1. Combining the stem and buds of two best quality plants is called _____.

- (a) Cutting
- (b) Grafting
- (c) Layering
- (d) Tissue culture

2. Observe the given foodchain.

Green plants → Grasshopper → Frog → Eagle

In the given food chain, the herbivore is

- (a) Frog
- (b) Grasshopper
- (c) Eagle
- (d) Green plants

3. An embryo of a seed consists of _____.

- (a) Radicle, Plumule, Cotyledons
- (b) Radicle and Plumule
- (c) Radicle and Cotyledons
- (d) Radicle, Plumule and Embryonal axis

4. Which of the following vaccines contains killed germs?
- (a) TAB vaccine for typhoid
 - (b) Salk's vaccine for poliomyelitis
 - (c) Vaccine for rabies
 - (d) BCG vaccine for tuberculosis
5. Whooping cough is a/an_____.
- (a) Droplet infection
 - (b) Food borne infection
 - (c) Air borne infection
 - (d) Water borne infection
6. Reflex actions are under the control of the____.
- (a) Brain
 - (b) Medulla oblongata
 - (c) Spinal cord
 - (d) Cerebellum
7. Evergreen broad-leaved trees are characteristic of
- (a) Tropical rainforests
 - (b) Temperate deciduous forests
 - (c) Coniferous forests
 - (d) Deserts
8. _____is required for the synthesis of thyroxine.
- (a) Calcium
 - (b) Iron
 - (c) Iodine
 - (d) Potassium
9. The eggs of fishes are kept in a _____ for developing into fry.
- (a) Nursery tank
 - (b) Rearing tank
 - (c) Small tank
 - (d) Stocking pond
10. Which of the following changes are not associated with adolescence?
- (e) Change in body shape
 - (f) Change in voice
 - (g) Increase in height
 - (h) Decreased activity of sweat and sebaceous glands
11. The technique of crossing two individuals of different varieties is called_____.

- (a) Tissue culture
 - (b) Self pollination
 - (c) Cross pollination
 - (d) Hybridisation
12. Which one of the following favours the fastest transpiration rate?
- (a) A cool, humid, windy day
 - (b) A hot, humid, windy day
 - (c) A hot, humid, still day
 - (d) A hot, dry, windy day
13. Amoeba reproduces by _____
- (a) Regeneration
 - (b) Binary fission
 - (c) Multiple fission
 - (d) Fragmentation
14. A state of mental or emotional strain is termed
- (a) Stress
 - (b) Adolescence
 - (c) Puberty
 - (d) Disease
15. Cortisone hormone is secreted by the _____.
- (a) Medulla of the adrenal gland
 - (b) Cortex of the adrenal gland
 - (c) Anterior lobe of the pituitary gland
 - (d) Posterior lobe of the pituitary gland

Question 2

(A) Mention the food constituent which may be lacking in one's diet, in case of the following:

[5]

1. A child having rickets
2. A person suffering from scurvy
3. A person suffering from beri-beri
4. A child suffering from kwashiorkor
5. A person suffering from anaemia

(B) Fill in the blanks and rewrite the sentences:

[5]

1. Reproduction in spirogyra is by means of _____.
2. The colourless fluid that flows within the lymphatic system is called _____.
3. Kwashiorkor is caused due to the deficiency of _____.
4. _____ cells produce testosterone.
5. The period of life when the body undergoes development leading to reproductive maturity is called _____.

Question 3

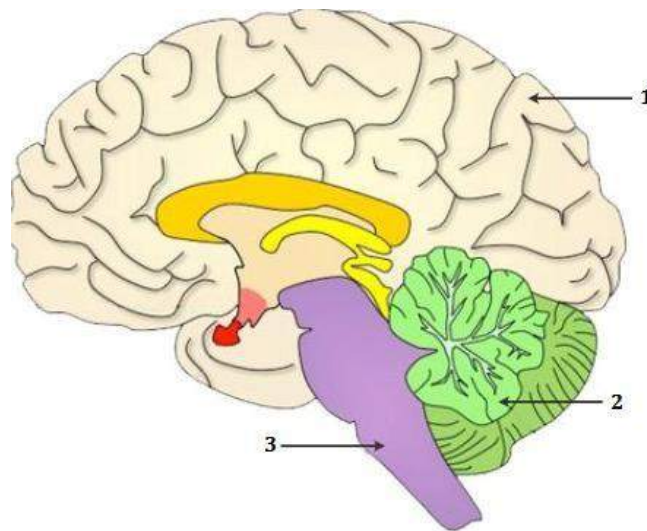
(A) Match the items in column I with the appropriate items in column II.

[5]

Column A	Column B
1. Plasma	a) polio
2. Oil producing glands in the skin	b) Gujarat
3. Vaccination	c) liquid component of blood
4. Gir forest	d) Uttarakhand
5. Jim Corbett National Park	e) sebaceous glands

(B) Study the diagram below and answer the questions that follow:

[5]



1. Label the numbered parts.
2. Write the functions of part 1 and part 3.

Question 4

- (A) An apparatus shown alongside was set up in sunlight for about an hour. It was observed that drops of water appeared on the inside of the polythene bag. [5]



1. Name the process which is being demonstrated.
 2. Why are the pot and the soil left uncovered by the polythene bag?
 3. Why was the plant left in the sunlight?
 4. Suppose the pot in this experiment, was placed inside a room instead of placing it in the sunlight. What difference would be noticed?
- (B) Draw a neat diagram of the following and only label the parts mentioned against it. [5]
1. Structure of a seed.
 2. Human sperm.

Question 5

- Give one point of difference between the following on the basis of what is given in the brackets: [5]

1. Fragmentation and regeneration (process)
 2. Endocrine glands and exocrine glands (secretions)
 3. Artery and vein (muscular wall)
 4. Kharif crops and rabi crops (season of cultivation)
 5. Xylem and phloem (substances transported)
- (B) Complete the correlation. [5]
1. Fresh water fish: Tilapia:: _____: Marine waterfish
 2. Millets: cereals:: Hemp: _____
 3. Bombyx mori: Sericulture:: Apiculture: _____
 4. Fry: Nursery tank:: Rearing tank: _____
 5. Fowl Pox: Ranikhet:: _____: Bacterial disease

Question 6

(A) Complete the following and rewrite the table. [5]

Gland	Hormone	Major Function	Effects of hyposecretion	Effects of hypersecretion
1 _____	Insulin	2 _____	Diabetes mellitus	3 _____
Thyroid	4 _____	General metabolism	5 _____	6 _____
7 _____	8 _____	Growth of the child	9 _____	10 _____

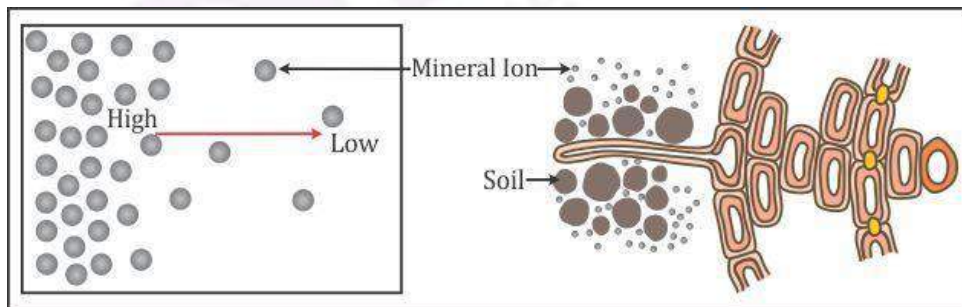
(B) Define the following terms: [5]

1. Blood pressure
2. Disease
3. Semi-permeable membrane
4. Sericulture
5. Food web

Question 7

(A)

1. Given below is a diagram of a method of transportation in plants. Identify and explain the method in brief. [3]



2. Which endocrine gland is called master gland? Why? [2]

(B)

1. State any three symptoms of protein deficiency kwashiorkor. [2]
2. Explain the process of blood clotting. [3]