

1. Match the microorganisms given in the Column A to the group to which they belong in Column B.

Column A	Column B
(a) <i>Lactobacillus</i>	(i) Algae
(b) <i>Aspergillus</i>	(ii) Protozoa
(c) <i>Spirogyra</i>	(iii) Fungi
(d) <i>Paramecium</i>	(iv) Bacteria

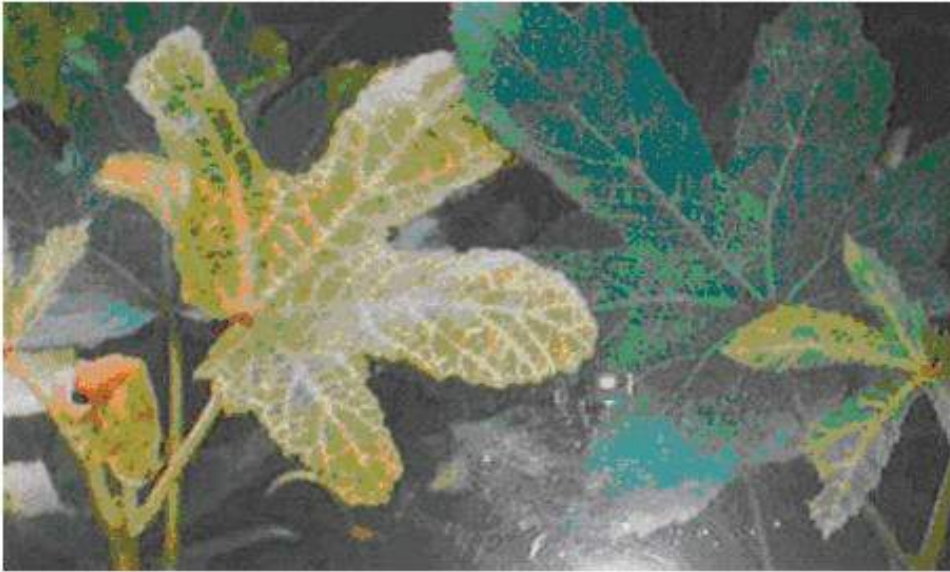
2. Classify the following into friendly and harmful microorganisms. Yeast, malarial parasite, *Lactobacillus*, bread mould, *Rhizobium*, *Bacillus anthracis*

Friendly	Harmful
_____	_____
_____	_____
_____	_____
_____	_____

3. While returning from the school, Boojho ate chaat from a street hawker. When he reached home, he felt ill and complained of stomach ache and fell ill. What could be the reason?
4. What will happen to 'pooris' and 'unused kneaded flour' if they are left in the open for a day or two?
5. (a) Name two diseases that are caused by virus.  
(b) Write one important characteristic of virus.

## Long Answer Type Questions

1. Observe the Fig.2.1 and answer the questions that follows.



**Fig. 2.1**

- (a) Write the name of the disease.
- (b) Name the causative agent of this disease?
- (c) How does the disease spread from one plant to another?
- (d) Name any two plant diseases and the microbes that cause them.

2. How do vaccines work?

3. Observe the set up given in Fig. 2.2 and answer the following questions.

- (a) What happens to the sugar solution in A?
- (b) Which gas is released in A?
- (c) What changes will you observe in B when the released gas passes through it?

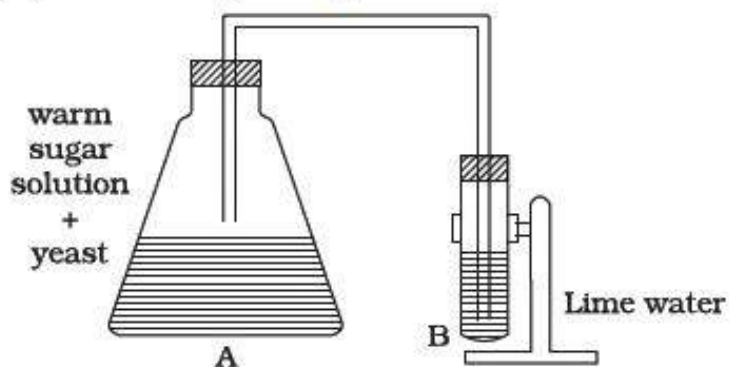


Fig. 2.2

4. Observe the Fig.2.3 and answer the following question

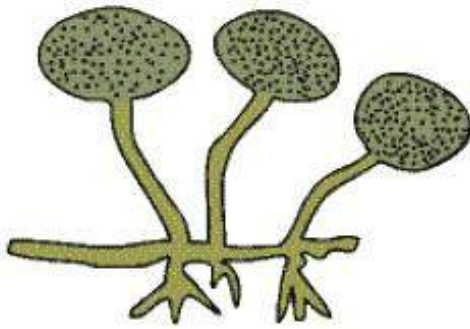


Fig. 2.3

- (a) Name the microorganism and the group to which it belongs.
  - (b) Name the food item on which the organism grows.
  - (c) Does it grow well in dry or in moist conditions?
  - (d) Is it safe to eat infected bread?
5. Give reasons for the following.
- (a) Fresh milk is boiled before consumption while processed milk stored in packets can be consumed without boiling.
  - (b) Raw vegetables and fruits are kept in refrigerators whereas jams and pickles can be kept outside.
  - (c) Farmers prefer to grow beans and peas in nitrogen deficient soils.
  - (d) Mosquitoes can be controlled by preventing stagnation of water though they do not live in water. Why?
6. How can we prevent the following diseases?
- (a) Cholera

- (b) Typhoid
- (c) Hepatitis A

7. Complete the following cycle given as Fig. 2.4 by filling the blanks (a), (b), (c) (d)

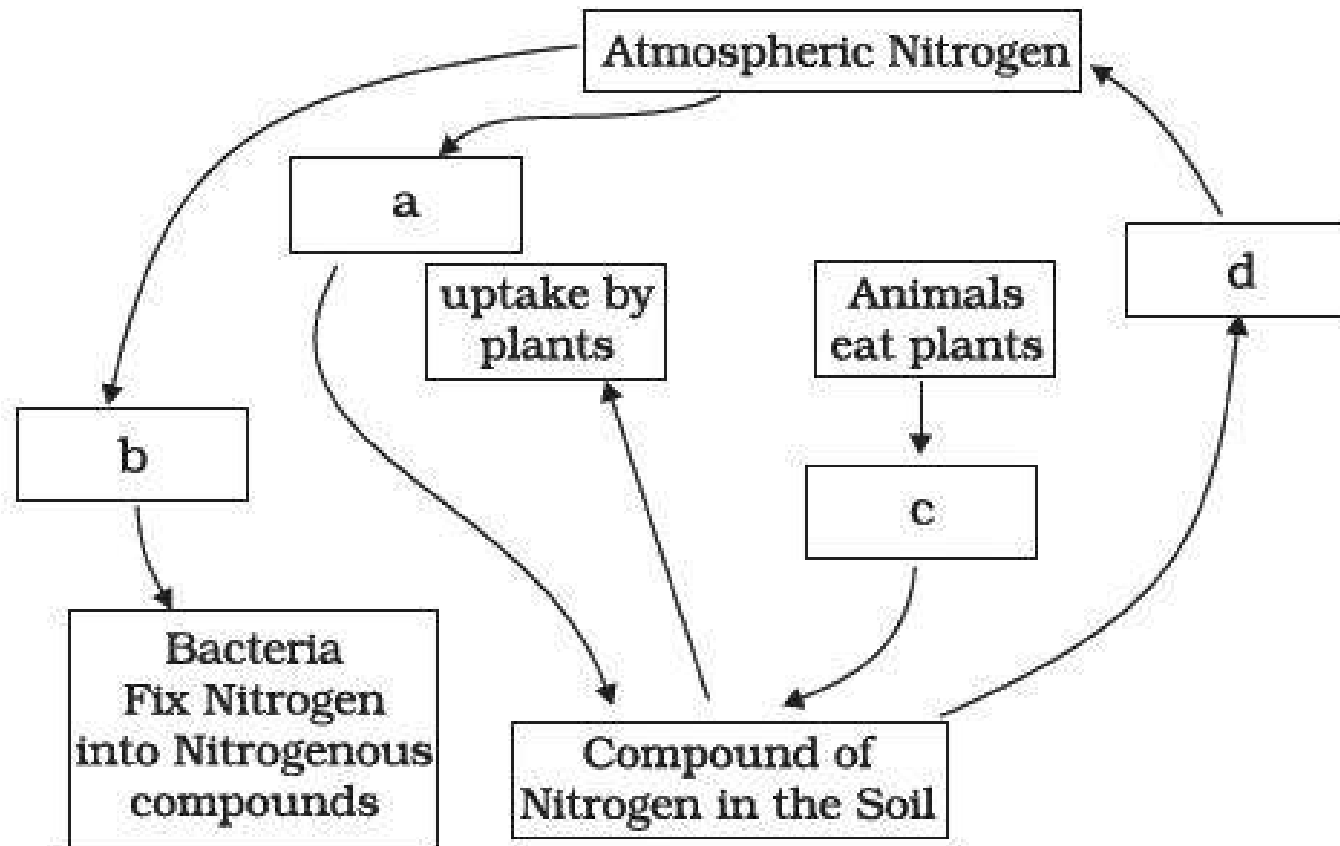


Fig. 2.4