

SSC CHSL Mock Test 3

Q1. The word given below has been used in sentences in four different ways. Choose the option corresponding to the sentence in which the usage of the word is incorrect or inappropriate.

Rake

1. When the dotcom boom occurred in the 1990s, his company raked in more than \$300 million.
2. She asked him to stop raking up the past at the slightest excuse.
3. The manager raked me around the coals for being late again.
4. She got a 5% rake-off from the deal.

Q.2. The word given below has been used in sentences in four different ways. Choose the option corresponding to the sentence in which the usage of the word is incorrect or inappropriate.

Scrape

1. Bringing up that minor legal point proves that you're scraping the bottom of the barrel.
2. I might scrape out the exam if I'm lucky.
3. After many attempts he managed to scrape into an Ivy League college.
4. Her parents were able to scrape up the money to send their daughter to an international business school.

Q.3. The word given below has been used in sentences in four different ways. Choose the option corresponding to the sentence in which the usage of the word is incorrect or inappropriate.

Talk

1. You can't have a real conversation with him—he just talks at you all the time.
2. I didn't want to move abroad but Bill talked me over it.
3. Can you talk me through the various investment options?
4. They talked up the tourist attractions to encourage more visitors.

Q.4. Five sentences are given below, labeled A, B, C, D and E. They need to be arranged in a logical order to form a coherent paragraph. From the given options, choose the most appropriate one.

- A. But it's not always easy to find one with genuine value that you connect with.
- B. It's fairly easy to find a well-written book or an online article.
- C. There are literally thousands of them written on the same topic every year.
- D. That's because, these days, books and online articles are a dime a dozen.
- E. So deciphering the 'good' from the 'great' can prove to be quite a challenge.

1. BADCE
2. EADCB
3. EDABC
4. EBCDA

Q.5. Five sentences are given below, labeled A, B, C, D and E. They need to be arranged in a logical order to form a coherent paragraph. From the given options, choose the most appropriate one.

- A. This felicity of forgetfulness lasted but half an hour.
- B. Soon the heroine of the story sat on a low branch of a tree in paradise and wouldn't move out of the place
- C. He sat rapt in the vision of a heavenly world which some film director had chosen to present.
- D. Soon the lights went out and the show started a Tamil film with all the known gods in it.

E. He soon lost himself in the politics and struggles of gods and goddesses.

1. DBAEC
2. DECAB
3. BDAED
4. EACBD

Q.6. Five sentences are given below, labeled A, B, C, D and E. They need to be arranged in a logical order to form a coherent paragraph. From the given options, choose the most appropriate one.

- A. When animals such as bees, butterflies, moths, flies, and hummingbirds pollinate plants, it's accidental.
- B. Usually they are at the plant to get food, the sticky pollen or sweet nectar made at the base of the petals.
- C. They are not trying to pollinate the plant.
- D. When feeding, the animals accidentally rub against the stamens and get pollen stuck all over themselves.
- E. When they move to another flower to feed, some of the pollen can rub off onto this new plant's stigma.

1. EABDC
2. DCABE
3. EADBC
4. ACBDE

Q.7. A paragraph is given below from which the last sentence has been deleted. From the given options, choose the one that completes the paragraph in the most appropriate way.

One area of specialization that I'm particularly skeptical of, is Computers. In recent years, a lot of hoopla has surrounded the arrival of computers in the classroom. Frankly, I'm not so sure that the ability to work a computer is all that essential to the future of this world. After all, what is a computer? It's a sort of brain that you can numbly call on with your fingers to obtain information.

1. This information is by and large needed, thus making computers a necessity.
2. There are several other specializations much more important for the future of this world, than computers.
3. But what are you going to do with all that information once you get it?
4. What for then do we require computers? We can progress very well without these.

Directions (8-10) In the following question the symbols @, \$, #, ©, and % are used with the following meaning-

- P\$Q means P is not smaller than Q
- P©Q means P is neither greater than nor equal to Q
- P#Q means P is neither smaller than nor equal to Q
- P%Q means P is not greater than Q
- P@Q P is neither greater than nor smaller than Q

Now in each of the following questions find which of the following conclusion I, II, III, and IV is/are true and give answer accordingly.

Q.8.

Statements:

D % A, A @ B, B © K, K%M

Conclusions:

- I. B \$ D
- II. K # A
- III. M # B
- IV. A © m

- 1. Only I , II and IV are correct
- 2. Only I , II and III are correct
- 3. Only II , III and IV are correct
- 4. All I, II, III and IV are correct

Q.9.

Statements:

T % R, R \$ M, M @ D, D © H

Conclusions:

- I. D % R
- II. H # R
- III. T © M
- IV. T % D

- 1. Only I is true
- 2. Only I and III are true
- 3. Only II is true
- 4. Only II, III, and IV are true

Q.10.

Statements:

F # H, H @ M, M © E, E \$ J

Conclusions:

- I. J © M
- II. E # H
- III. M © F
- IV. F # E

- 1. Only I and II are true
- 2. Only I, II and III are true
- 3. Only II and III are true
- 4. Only III and IV are true

Directions (11- 14) Study the information given and carefully answer the questions followed.

A, B, C, D, E, F, G and H are sitting around a circle but not necessarily in the same order

- B sits next to the left of H's husband. No female is an immediate neighbour of B.
- D's daughter sits second to the right of F. F is the sister of G. F is not an immediate neighbour of H's husband.
- Only one person sits between H and G. g is mother of C. G is not an immediate neighbour of E.

- Only one person sits between A and F. A is father of G. H's brother D sits to the immediate left of H's mother.
- Only one person sits between H's mother and E.

Q.11. Who among the following is D's daughter?

1. C
2. E
3. G
4. H

Q.12. What is the position of A with respect to his Mother-in-law?

1. Immediate right
2. Third to the right
3. Second to the right
4. Fourth to the left

Q. 13. Who sits immediately to the left of C?

1. G's Son
2. D's Mother-in-law
3. F's Grandmother
4. A

Q.14. How many people sit between G and her Uncle?

1. One
2. Two
3. Three
4. Four

Q.15.

Statements:

All fans are electricity
All electricity are pumps
No pumps is machine

Conclusions:

- I. Some fans are definitely not pumps
- II. Some fans being machine is a possibility
- III. No machine is fan
- IV. No electricity is machine

1. Only I and III follows
2. Only I and II follows
3. Only III and IV follows
4. Only II and IV follows

Q.16.

Statements:

Some Teachers are Professors

All Teachers are Lecturer
No Lecturer is a Principal

Conclusions:

- I. Some Lecturer are Professors
- II. No Teacher is a Principal

- 1. Only I follows
- 2. Only II follows
- 3. Both I and II follows
- 4. Neither I and II follows

Q.17. What will come in place of (?).

$$4003 \times 77 - 21015 = ? \times 116$$

- 1. 2477
- 2. 2476
- 3. 2478
- 4. 3476

Q.18. $\frac{5}{8}$ of 4011.33 + $\frac{7}{10}$ of 3411.22 = ?

- 1. 4980
- 2. 4810
- 3. 4930
- 4. 4890

Q.19. In the following questions, two quadratic equations are given. Based on the equations answer the following questions.

Equation I: $6x^2 + 11x - 35 = 0$

Equation II: $5y^2 - 4y - 9 = 0$

- 1. $x > y$
- 2. $y > x$
- 3. $x \geq x$
- 4. $x = y$ or no relation

Q 20.

Equation I: $3x^2 + 5x - 2 = 0$

Equation II: $y^2 - 16 = 0$

- 1. $y > x$
- 2. $x \leq y$
- 3. $x \geq x$
- 4. $x = y$ or no relation

Q 21. Shikha sells a plot of land at 8% profit. If she had sold it at 15% profit, she would have received Rs. 630 more. What is the selling price of the land?

1. Rs. 9000
2. Rs. 9725
3. Rs. 9720
4. Rs. 9700

Q 22. A box contains 21 balls numbered 1 to 21. A ball is drawn and then another ball is drawn without replacement. What is the probability that both balls are even-numbered?

1. $\frac{3}{14}$
2. $\frac{1}{2}$
3. $\frac{4}{13}$
4. $\frac{5}{17}$

Q.23

7 15 32 67 138 ?

1. 216
2. 269
3. 281
4. 272

Q. 24. 352 343 327 302 266 ?

1. 222
2. 217
3. 218
4. 210

Q.25. Pratik invested 20% more than Meghna. Meghna invested 10% less than Ravi. If the total sum of their investment is ₹17880. How much did Ravi invest?

1. 8000
2. 5880
3. 6000
4. 7880

Answer Key

Q 1. 3	Q 2. 2	Q 3. 2	Q 4. 1	Q 5. 2
Q 6. 4	Q 7. 3	Q 8. 4	Q 9. 1	Q 10. 3
Q 11. 2	Q 12. 3	Q 13.3	Q 14. 1	Q 15. 3
Q 16. 3	Q 17. 2	Q 18. 4	Q 19. 4	Q 20. 4
Q 21. 3	Q 22. 1	Q 23. 3	Q 24. 2	Q 25. 3

Solutions:

Solution 8:

$$D \% A \Rightarrow D \leq A$$

$$A @ B \Rightarrow A = B$$

$$B \odot K \Rightarrow B < K$$

$$K \% M \Rightarrow K \leq M$$

$$\text{Therefore, } D \leq A = B < K \leq M$$

Conclusions:

$$B \$ D \Rightarrow B \geq D \text{ is true}$$

$$K \# A \Rightarrow K > A \text{ is true}$$

$$M \# B \Rightarrow M > B \text{ is true}$$

$$A \odot m \Rightarrow A < M \text{ is true}$$

Solution 9:

$$T \% R \Rightarrow T \leq R$$

$$R \$ M \Rightarrow R \geq M$$

$$M @ D \Rightarrow M = D$$

$$D \odot H \Rightarrow D < H$$

$$\text{Therefore, } T \leq R \geq M = D < H$$

Conclusions:

$$D \% R \Rightarrow D \leq R \text{ is true}$$

$$H \# R \Rightarrow H > R \text{ is not true}$$

$$T \odot M \Rightarrow T < M \text{ is not true}$$

$$T \% D \Rightarrow T \leq D \text{ is not true}$$

Solution 10:

$$F \# H \Rightarrow F > H$$

$$H @ M \Rightarrow H = M$$

$$M \odot E \Rightarrow M < E$$

$$E \$ J \Rightarrow E \geq J$$

$$\text{Therefore, } F > H = M < E \geq J$$

Conclusions:

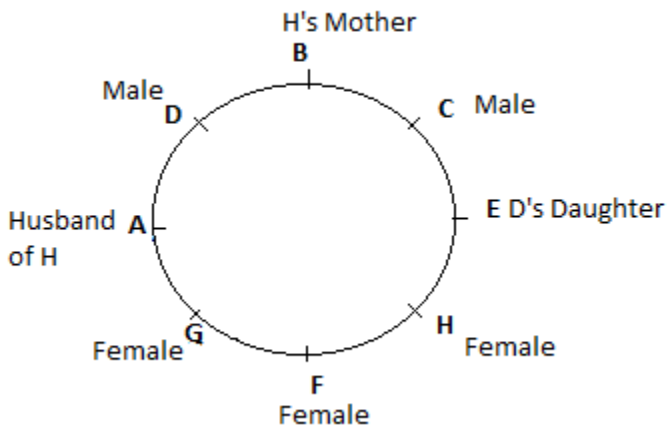
$$J \odot M \Rightarrow J < M \text{ is not true}$$

$$E \# H \Rightarrow E > H \text{ is true}$$

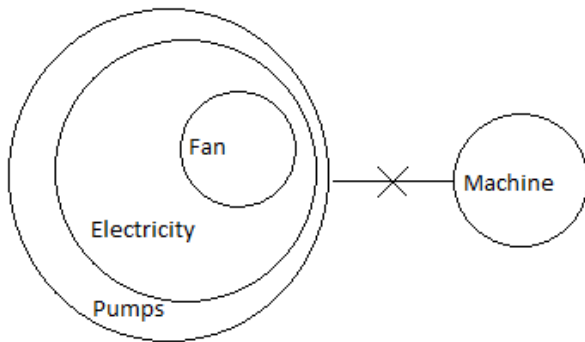
$$M \odot F \Rightarrow M < F \text{ is true}$$

$$F \# E \Rightarrow F > E \text{ is not true}$$

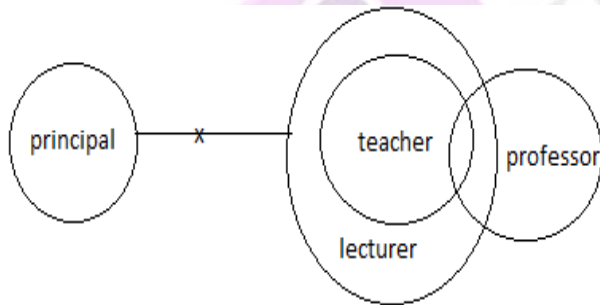
Solution (11-14):



Solution 15:



Solution 16:



Solution 17:

$$4003(70+7) - 21015 = ? \times 116$$

$$280210 + 28021 - 21015 = ? \times 116$$

$$287216 = ? \times 116$$

$$287216 \div 116 = ?$$

$$= 2476$$

Solution 18:

$$[(4011.33 \times 5) / 8] + [(3411.22 \times 7) / 10]$$

$$= [(4000 \times 5) / 8] + [(3400 \times 7) / 10]$$

$$= 2500 + 2380$$
$$= 4880$$

Solution 19:

Equation I: $6x^2 + 11x - 35 = 0$

$6x^2 + 21x - 10x - 35 = 0$

$3x(2x+7) - 5(2x+7) = 0$

$X = 5/3 \text{ or } 7/2$

Equation II: $5y^2 - 4y - 9 = 0$

$5y^2 + 5y - 9y - 9 = 0$

$5y(y+1) - 9(y+1) = 0$

$Y = -1 \text{ or } 9/5$

Solution 20:

Equation I: $3x^2 + 6x - x - 2 = 0$

$3x(x+2) - 1(x+2) = 0$

$x = 1 \text{ or } -2/3$

Equation II: $y^2 - 16 = 0$

$y = +4 \text{ or } -4$

Solution 21:

7% of the cost price = Rs.630

Cost price = Rs.9000

Selling price at a profit of 8% = Rs.9720

Solution 22:

There are 10 even numbers between 1 to 21.

The probability that the first ball is even-numbered = $10/21$

The probability that the second ball is even-numbered = $9/20$

Required probability = $10/21 \times 9/20 = 3/14$

Solution 23:

$7 \times 2 + 1 = 15$

$15 \times 2 + 2 = 32$

$32 \times 2 + 3 = 67$

$67 \times 2 + 4 = 138$

$138 \times 2 + 5 = 281$

Solution 24:

$352 - 3^2 = 343$

$343 - 4^2 = 321$

$321 - 5^2 = 302$

$302 - 6^2 = 266$

$266 - 7^2 = 217$

Solution 25:

Let Ravi's investment = ₹100

Therefore, Meghna's investment = ₹90

Pratik's investment = $[(90 \times 120) / 100] = ₹ 108$

Therefore, the ratio of Pratik, Meghna and Ravi investment = 108 : 90 : 100
i.e. 54 : 45 : 50

Sum of the ratio - $54 + 45 + 50 = 149$

Therefore, Ravi's investment is
 $50/149 \times 17880 = ₹6000$.

