

SUBJECT: SCIENCE
Class – VI

TIME: 2¹/₂Hrs.
MAX. MARKS: 60

General Instructions

1) The question paper comprises of two sections, A and B. You are to attempt both the sections. All questions of section A and B are to be attempted separately.

2) All questions are compulsory.

3) Marks for each question are indicated against it.

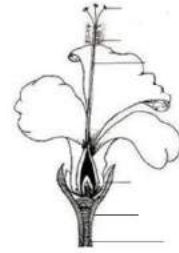
Choose the most appropriate option: -

SECTION-A

- (1) What is roughage? (1)
- (2) Name two items that are made from coconut fibre. (1)
- (3) Give two examples of substances soluble in water. (1)
- (4) What is transpiration? (1)
- (5) Which joint of our body is immovable? (1)
- (6) Name two carnivores and herbivores each. (2)
- (7) What is balanced diet? (2)
- (8) Distinguish between knitting and weaving. (2)
- (9) Distinguish between hard and soft material. (2)
- (10) Write two changes which can be reversed. (2)
- (11) Distinguish between herbivores, omnivores and carnivores. (3)
- (12) What are deficiency diseases? Name any two deficiency diseases. (3)
- (13) Distinguish between synthetic and natural fibre. (3)
- (14) Define transparent, translucent and opaque objects. (3)
- (15) What is winnowing? Where is it used? (3)
- (16) Define the following keywords--- (1+1+2+1=5)
 - (i) Threshing
 - (ii) Sieving
 - (iii) Sedimentation and Decantation
 - (iv) Condensation

(17) Distinguish between reversible and irreversible changes with example.
(3+2=5)

(18) a) Label the parts of the flower in the figure:
b) Draw a labelled diagram of a leaf.
(3+2=5)



(19) What are joints? Name different type of joints with examples. (5)

SECTION- B

- (20) Source for honey –
- Seeds
 - Fruits
 - Nectar
 - Stem
- (21) Iodine deficiency causes-
- Anemia
 - Beriberi
 - Goiter
 - None of these
- (22) Source of roughage –
- Plants
 - Chicken
 - Fish
 - Sun
- (23) Which is **not** the part of flower?
- Stem
 - Pistil
 - Sepal
 - Petal
- (24) Technique to separate butter from milk/curd is –
- Decantation
 - Filtration
 - Condensation
 - Churning
- (25) Which one is artificial fibre-
- Silk
 - Nylon
 - Cotton
 - Jute
- (26) Conversion of water into vapour
- Evaporation
 - Melting
 - Expansion
 - Contraction
- (27) Shoulder has
- Pivotal Joint
 - Hinge joint
 - Ball and socket joint
 - Fixed joint
- (28) Arrangement of veins in leaf is called as
- Placentation
 - Aestivation
 - Transpiration
 - Venation
- (29) Which one is plant product
- Milk
 - Egg
 - Sugar
 - Meat