

Q.4 Answer the following

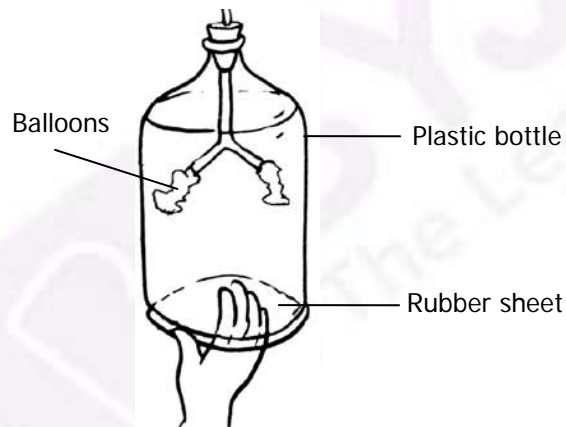
(2x6=12)

- i) What kind of clothes will keep us comfortable in summers? and why?
- ii) What is the climate of polar region?
- iii) What are the destruction caused by cyclones?
- iv) How is inhaled air different from exhaled air?
- v) How much urine is passed out by a normal adult human being? What is the composition of urine?
- vi) A car covers a distance of 450km in 8hours.Find its speed.

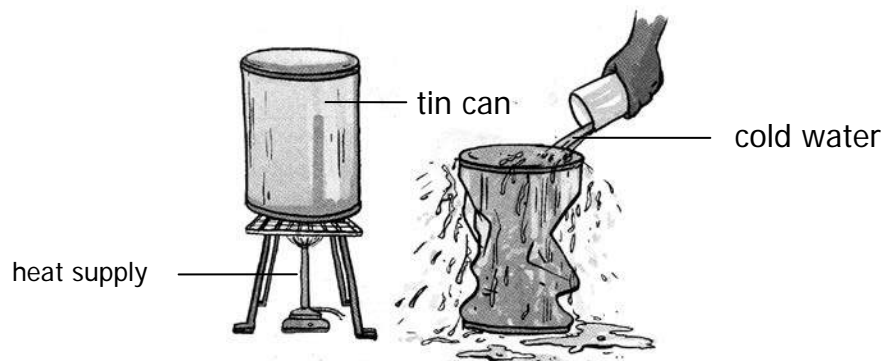
Q.5 Answer the following

(3x9=27)

- i) a) Name and define the mode of transfer of heat in which heat is transferred in the absence of a medium.
b) What is normal body temperature of human body.
- ii) Write three adaptive features of camel.
- iii) a) Give two examples of animals found in hot and humid climate.
b) Where is penguin found?
- iv) a) What does the rubber sheet represent in the diagram shown below?
b) What do the balloons represent in the given diagram? Give the function of the part represented by the balloons.



- v) a) Observe the activity shown below carefully and explain the reason for the change in the tin can, when cold water is poured on it.

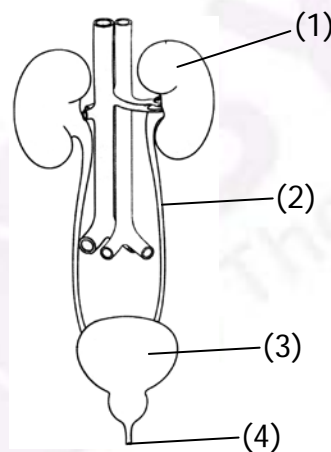


- b) What are cyclones called in American continent?

- vi)
 - a) Name the artery which carries deoxygenated blood.
 - b) Name the pigment which makes the blood red.
 - c) What is the liquid part of our blood known as?
- vii) Give one example of an organisms which reproduces by
 - a) Budding
 - b) Fragmentation
 - c) Roots
- viii) a) Draw the shape of distance time graph for a vehicle moving with constant speed.
 - b) What is the basic unit of time.
- ix) Write three safety measure that are to be taken during a thunderstorms

Q.6 Answer the following (3x5=15)

- i)
 - a) Draw a labelled diagram to show reproduction in Yeast by budding
 - b) Differentiate between Stamen and Pistil of a flower.
- ii) Observe the given diagram and answer the following questions



- a) Label 1,2,3 and 4
 - b) What is function of part labeled (3)
 - c) What is the smallest filtering unit of kidney called?
 - d) Name the major excretory product of birds.
- iii) a) What is the function of kink in the clinical thermometer?
 - b) Write any two effects that heat causes in a substance.
 - c) Why are digital thermometers preferred over mercury thermometers?