

Karnataka Board Class 7 Science Model Question Paper

Time : 1 Hour 30 Minutes

Subject : Science
Medium : English

Marks : 40

I. Fill in the blanks with suitable answers :

[3 × 1 = 3]

1. Arteries and Veins are joined by a network of _____.
2. Anther produces _____ gametes.
3. Symbol used to represent an Electric bulb in an Electric Circuit is _____.

II. Match the following :

[4 × 1 = 4]

- | 'A' | 'B' |
|---------------|-------------------|
| 4. Earth Worm | a) Lung |
| 5. Fish | b) Trachea |
| 6. Dog | c) Moist Skin |
| 7. Cockroach | d) Lungs and Skin |
| | e) Gills |

Question Number	Answers
4.	
5.	
6.	
7.	

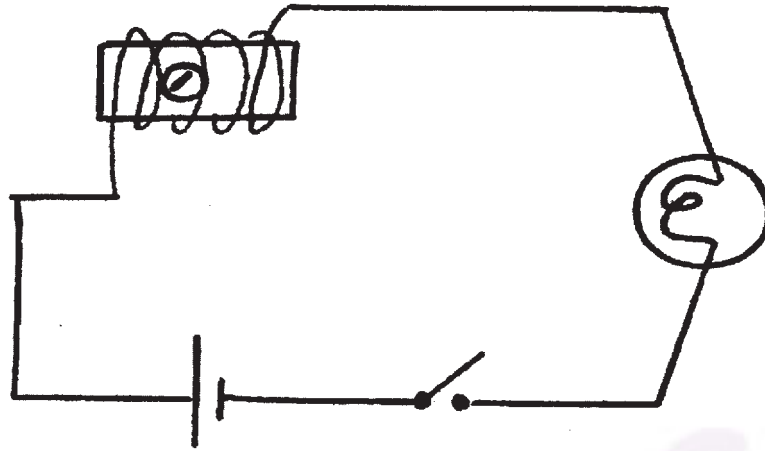
III. Answer the following questions in one sentence each.

8. What is the function of White Blood Cells (WBC)?
9. Through which media seed of drumstick is dispersed?
10. Which safety Electric device controls flow of Electricity in circuit?
11. Name the bi-products of waste-water treatment.
12. What is dispersion of Light?

IV. Answer the following questions in two sentences each.**[10 × 2 = 20]**

13. List out the differences between Self Pollination & Cross Pollination.
14. Write the characteristics of Image formed by concave lens.
15. Write the types of motions noticed in the following situations.
 - a) Motion of pons on Carrom board.
 - b) Motion of hands in Clock.
 - c) Motion of a Pendulum
 - d) Pedal of a bicycle in motion
16. How can you reduce the use of water while maintaining your school garden?

17. Why compass needle shows deflection when the switch in the given circuit is closed?



18. With the help of an Equation explain Aerobic respiration.

19. What is the role of bar screens in waste water treatment plant?

20. Anitha takes 10 minutes to reach her school from home by bicycle. If the speed of bicycle is 3 m/s, then Express the distance between her home and school in terms of kms?

21. Write the uses of magnifying lens?

22. There are ten tube well on a street with fifty houses so what is the long-term impact on ground water levels?

V. Answer the following questions in four sentences each.

[2 × 4 = 8]

23. “Nothing is waste in forests” Justify this statement.

24. Write the neat diagram of human heart and Label the following parts.

- a) Right Auricle
- b) Left Ventricle
- c) Aorta
- d) Vena Cava