

Human Reproduction: 5 Intriguing Questions

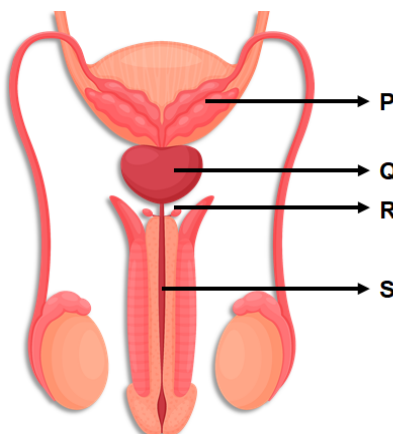
CBSE: Term 2
Grade 10th: Biology

Instructions:

1. This set contains 5 questions.
2. Go through the questions properly.
3. Attempt all the questions.
4. Each question contains four options.
5. Only one of the options is correct.

1.	<p>Statement A: Seminal vesicles and prostate gland add their secretions to constitute semen. Statement B: These secretions provide nutrition to the egg which helps in fertilisation.</p> <p>A. Both statements A and B are correct and B is the correct explanation of A B. Both statements A and B are correct but B is not the explanation of A C. Only statement A is correct D. Only statement B is correct</p>
2.	<p>Changes during adolescence are sometimes general to both genders, and some are gender-specific. Below are some changes listed that occur during adolescence:</p> <p>(i) Growth of body hair (ii) Development of reproductive organs (iii) Widening of hips (iv) Onset of the menstrual cycle</p> <p>Choose an option that best describes the changes specific to females.</p> <p>A. (i), (ii), (iii), and (iv) B. (ii), (iii), and (iv) C. Only (iv) D. (iii) and (iv)</p>

3. The given figure shows the male reproductive system. Some parts are labelled as P, Q, R, and S. Identify the structure whose removal will cause the sperm to react with acidic urine in the urethra.



- A. P
- B. Q
- C. R
- D. S

4. In the given columns, column-I contains parts of the male and female reproductive system and column-II contains their features. Identify the correct part in column-I that corresponds to its feature in column-II.

Part	Feature
I. Seminal vesicle	1. Site of fertilisation
II. Ovary	2. Provides nutrition to sperms
III. Oviduct	3. Embryo gets implanted in this
IV. Uterus	4. Releases oestrogen

- A. I-3; II-4; III-1; IV-2
- B. I-2; II-3; III-1; IV-4
- C. I-3; II-4; III-1; IV-1
- D. I-2; II-4; III-1; IV-3

Adolescence is the phase of life between childhood and adulthood. Some statements about adolescence are given below:

- 5.
- (i) Everyone undergoes secondary sexual changes at the same age
 - (ii) Males and females undergo different changes
 - (iii) These changes are induced by hormones
 - (iv) Puberty is just a part of adolescence

Which of the statements given are correct for adolescence?

- A. (i),(iii), and (iv)
- B. Only (ii)
- C. (ii) and (iii)
- D. (ii), (iii), and (iv)