

DATE : 17/07/2022

Test Booklet Code



**T6**

**LABHO**

Corporate Office : Aakash Tower, 8, Pusa Road, New Delhi-110005 | Ph.: 011-47623456

## Questions & Answers

Time : 3 hrs. 20 Min.

M.M. : 720

*for*

## NEET (UG)-2022

### Important Instructions :

1. The test is of **3.20 hours** duration and the Test Booklet contains **200** multiple choice questions (Four options with a single correct answer). There are two sections in each subject, i.e. Section-A & Section-B. You have to attempt all 35 questions from Section-A & only 10 questions from Section-B out of 15. (**Candidates are advised to read all 15 questions in each subject of Section-B** before they start attempting the question paper. In the event of a candidate attempting more than ten questions, **the first ten questions answered by the candidate shall be evaluated.**)
2. Each question carries **4 marks**. For each correct response, the candidate will get **4 marks**. For every wrong response **1 mark** shall be deducted from the total scores. The maximum marks are **720**.
3. Use **Blue / Black Ball point Pen only** for writing particulars on this page / marking responses on Answer Sheet.
4. Rough work is to be done in the space provided for this purpose in the Test Booklet only.
5. On completion of the test, the candidate must handover the Answer Sheet to the Invigilator before leaving the Room / Hall. The candidates are allowed to take away this Test Booklet with them.
6. The CODE for this Booklet is **T6**.
7. The candidates should ensure that the Answer Sheet is not folded. Do not make any stray marks on the Answer Sheet. Do not write your Roll No. anywhere else except in the specified space in the Test Booklet/Answer Sheet. Use of white fluid for correction is **NOT** permissible on the Answer Sheet.
8. Each candidate must show on-demand his/her Admission Card to the Invigilator.
9. No candidate, without special permission of the Centre Superintendent or Invigilator, would leave his/her seat.
10. Use of Electronic/Manual Calculator is prohibited.
11. The candidates are governed by all Rules and Regulations of the examination with regard to their conduct in the Examination Hall. All cases of unfair means will be dealt with as per Rules and Regulations of this examination.
12. No part of the Test Booklet and Answer Sheet shall be detached under any circumstances.
13. The candidates will write the Correct Test Booklet Code as given in the Test Booklet / Answer Sheet in the Attendance Sheet.

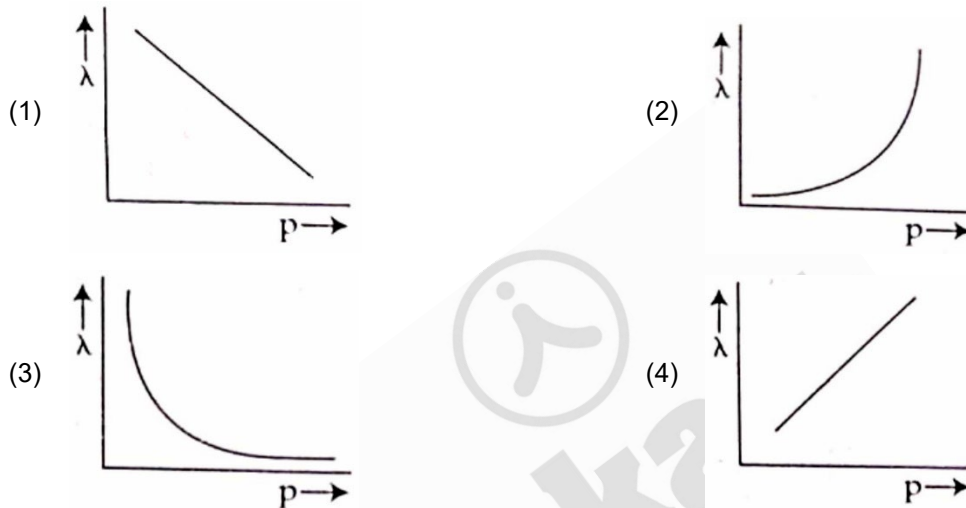
PHYSICS

SECTION-A

1. If a soap bubble expands, the pressure inside the bubble
- (1) Increases (2) Remains the same  
(3) Is equal to the atmospheric pressure (4) Decreases

Answer (4)

2. The graph which shows the variation of the de Broglie wavelength ( $\lambda$ ) of a particle and its associated momentum ( $p$ ) is



Answer (3)

3. A body of mass 60 g experiences a gravitational force of 3.0 N, when placed at a particular point. The magnitude of the gravitational field intensity at that point is
- (1) 50 N/kg (2) 20 N/kg  
(3) 180 N/kg (4) 0.05 N/kg

Answer (1)

4. Given below are two statements

**Statement I** : Biot-Savart's law gives us the expression for the magnetic field strength of an infinitesimal current element ( $Idl$ ) of a current carrying conductor only.

**Statement II** : Biot-Savart's law is analogous to Coulomb's inverse square law of charge  $q$ , with the former being related to the field produced by a scalar source,  $Idl$  while the latter being produced by a vector source,  $q$ .

In light of above statements choose the most appropriate answer from the options given below

- (1) Both Statement I and Statement II are incorrect  
(2) Statement I is correct and Statement II is incorrect  
(3) Statement I is incorrect and Statement II is correct  
(4) Both Statement I and Statement II are correct

Answer (2)

5. The ratio of the distances travelled by a freely falling body in the 1<sup>st</sup>, 2<sup>nd</sup>, 3<sup>rd</sup> and 4<sup>th</sup> second

- (1) 1 : 4 : 9 : 16 (2) 1 : 3 : 5 : 7  
(3) 1 : 1 : 1 : 1 (4) 1 : 2 : 3 : 4

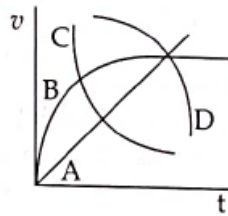
**Answer (2)**

6. In half wave rectification, if the input frequency is 60 Hz, then the output frequency would be

- (1) 30 Hz (2) 60 Hz  
(3) 120 Hz (4) Zero

**Answer (2)**

7. A spherical ball is dropped in a long column of a highly viscous liquid. The curve in the graph shown, which represents the speed of the ball ( $v$ ) as a function of time ( $t$ ) is



- (1) B (2) C  
(3) D (4) A

**Answer (1)**

8. The angle between the electric lines of force and the equipotential surface is

- (1) 45° (2) 90°  
(3) 180° (4) 0°

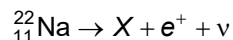
**Answer (2)**

9. As the temperature increases, the electrical resistance

- (1) Decreases for both conductors and semiconductors  
(2) Increases for conductors but decreases for semiconductors  
(3) Decreases for conductors but increases for semiconductors  
(4) Increases for both conductors and semiconductors

**Answer (2)**

10. In the given nuclear reaction, the element X is



- (1)  ${}_{10}^{23}\text{Ne}$  (2)  ${}_{10}^{22}\text{Ne}$   
(3)  ${}_{12}^{22}\text{Mg}$  (4)  ${}_{11}^{23}\text{Na}$

**Answer (2)**

11. Let  $T_1$  and  $T_2$  be the energy of an electron in the first and second excited states of hydrogen atoms, respectively. According to the Bohr's model of an atom, the ratio  $T_1 : T_2$  is

- (1) 4 : 1 (2) 4 : 9  
(3) 9 : 4 (4) 1 : 4

**Answer (3)**

12. The ratio of the radius of gyration of a thin uniform disc about an axis passing through its centre and normal to its plane to the radius of gyration of the disc about its diameter is

- (1)  $\sqrt{2} : 1$  (2) 4 : 1  
 (3) 1 :  $\sqrt{2}$  (4) 2 : 1

**Answer (1)**

13. When light propagates through a material medium of relative permittivity  $\epsilon_r$  and relative permeability  $\mu_r$ , the velocity of light,  $v$  is given by ( $c$ -velocity of light in vacuum)

- (1)  $v = \sqrt{\frac{\mu_r}{\epsilon_r}}$  (2)  $v = \sqrt{\frac{\epsilon_r}{\mu_r}}$   
 (3)  $v = \frac{c}{\sqrt{\epsilon_r \mu_r}}$  (4)  $v = c$

**Answer (3)**

14. The energy that will be ideally radiated by a 100 kW transmitter in 1 hour is

- (1)  $36 \times 10^4$  J (2)  $36 \times 10^5$  J  
 (3)  $1 \times 10^5$  J (4)  $36 \times 10^7$  J

**Answer (4)**

15. An electric lift with a maximum load of 2000 kg (lift + passengers) is moving up with a constant speed of  $1.5 \text{ ms}^{-1}$ . The frictional force opposing the motion is 3000 N. The minimum power delivered by the motor to the lift in watts is : ( $g = 10 \text{ m s}^{-2}$ )

- (1) 20000 (2) 34500  
 (3) 23500 (4) 23000

**Answer (2)**

16. Two resistors of resistance,  $100 \Omega$  and  $200 \Omega$  are connected in parallel in an electrical circuit. The ratio of the thermal energy developed in  $100 \Omega$  to that in  $200 \Omega$  in a given time is

- (1) 2 : 1 (2) 1 : 4  
 (3) 4 : 1 (4) 1 : 2

**Answer (1)**

17. The peak voltage of the ac source is equal to

- (1) The rms value of the ac source (2)  $\sqrt{2}$  times the rms value of the ac source  
 (3)  $1/\sqrt{2}$  times the rms value of the ac source (4) The value of voltage supplied to the circuit

**Answer (2)**

18. A shell of mass  $m$  is at rest initially. It explodes into three fragments having mass in the ratio 2 : 2 : 1. If the fragments having equal mass fly off along mutually perpendicular directions with speed  $v$ , the speed of the third (lighter) fragment is

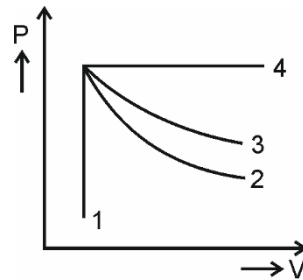
- (1)  $\sqrt{2}v$  (2)  $2\sqrt{2}v$   
 (3)  $3\sqrt{2}v$  (4)  $v$

**Answer (2)**

19. If the initial tension on a stretched string is doubled, then the ratio of the initial and final speeds of a transverse wave along the string is
- (1)  $\sqrt{2} : 1$  (2)  $1 : \sqrt{2}$   
 (3)  $1 : 2$  (4)  $1 : 1$

**Answer (2)**

20. An ideal gas undergoes four different processes from the same initial state as shown in the figure below. Those processes are adiabatic, isothermal, isobaric and isochoric. The curve which represents the adiabatic process among 1, 2, 3 and 4 is



- (1) 2 (2) 3  
 (3) 4 (4) 1

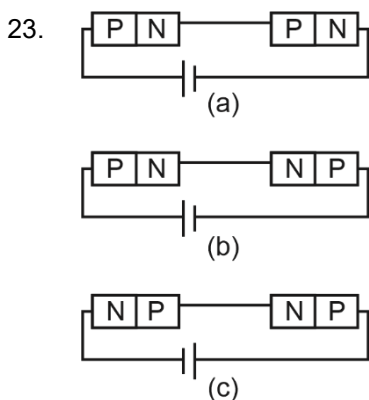
**Answer (1)**

21. The angular speed of a fly wheel moving with uniform angular acceleration changes from 1200 rpm to 3120 rpm in 16 seconds. The angular acceleration in  $\text{rad/s}^2$  is
- (1)  $4\pi$  (2)  $12\pi$   
 (3)  $104\pi$  (4)  $2\pi$

**Answer (1)**

22. Plane angle and solid angle have
- (1) Dimensions but no units (2) No units and no dimensions  
 (3) Both units and dimensions (4) Units but no dimensions

**Answer (4)**



In the given circuits (a), (b) and (c), the potential drop across the two  $p$ - $n$  junctions are equal in

- (1) Circuit (b) only (2) Circuit (c) only  
 (3) Both circuits (a) and (c) (4) Circuit (a) only

**Answer (3)**

24. In a Young's double slit experiment, a student observes 8 fringes in a certain segment of screen when a monochromatic light of 600 nm wavelength is used. If the wavelength of light is changed to 400 nm, then the number of fringes he would observe in the same region of the screen is
- (1) 8 (2) 9  
(3) 12 (4) 6

**Answer (3)**

25. When two monochromatic lights of frequency,  $\nu$  and  $\frac{\nu}{2}$  are incident on a photoelectric metal, their stopping potential becomes  $\frac{V_s}{2}$  and  $V_s$  respectively. The threshold frequency for this metal is

- (1)  $3\nu$  (2)  $\frac{2}{3}\nu$   
(3)  $\frac{3}{2}\nu$  (4)  $2\nu$

**Answer (3\*)**

\* Language of question is wrongly framed. The values of stopping potentials should be interchanged.

26. A square loop of side 1 m and resistance  $1 \Omega$  is placed in a magnetic field of 0.5 T. If the plane of loop is perpendicular to the direction of magnetic field, the magnetic flux through the loop is
- (1) 0.5 weber (2) 1 weber  
(3) Zero weber (4) 2 weber

**Answer (1)**

27. Two hollow conducting spheres of radii  $R_1$  and  $R_2$  ( $R_1 \gg R_2$ ) have equal charges. The potential would be
- (1) More on smaller sphere  
(2) Equal on both the spheres  
(3) Dependent on the material property of the sphere  
(4) More on bigger sphere

**Answer (1)**

28. A copper wire of length 10 m and radius  $\left(\frac{10^{-2}}{\sqrt{\pi}}\right)$  m has electrical resistance of  $10 \Omega$ . The current density in the wire for an electric field strength of 10 (V/m) is

- (1)  $10^6 \text{ A/m}^2$  (2)  $10^{-5} \text{ A/m}^2$   
(3)  $10^5 \text{ A/m}^2$  (4)  $10^4 \text{ A/m}^2$

**Answer (3)**

29. A long solenoid of radius 1 mm has 100 turns per mm. If 1 A current flows in the solenoid, the magnetic field strength at the centre of the solenoid is
- (1)  $12.56 \times 10^{-2} \text{ T}$  (2)  $12.56 \times 10^{-4} \text{ T}$   
(3)  $6.28 \times 10^{-4} \text{ T}$  (4)  $6.28 \times 10^{-2} \text{ T}$

**Answer (1)**

30. Two objects of mass 10 kg and 20 kg respectively are connected to the two ends of a rigid rod of length 10 m with negligible mass. The distance of the center of mass of the system from the 10 kg mass is
- (1)  $\frac{20}{3} \text{ m}$  (2) 10 m

- (3) 5 m (4)  $\frac{10}{3} \text{ m}$

**Answer (1)**

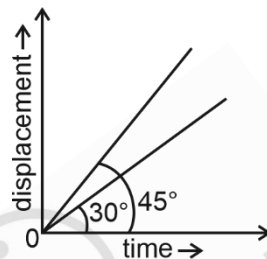
31. A light ray falls on a glass surface of refractive index  $\sqrt{3}$ , at an angle  $60^\circ$ . The angle between the refracted and reflected rays would be
- (1)  $60^\circ$  (2)  $90^\circ$   
 (3)  $120^\circ$  (4)  $30^\circ$

**Answer (2)**

32. The dimensions  $[MLT^{-2}A^{-2}]$  belong to the
- (1) Self inductance (2) Magnetic permeability  
 (3) Electric permittivity (4) Magnetic flux

**Answer (2)**

33. The displacement-time graphs of two moving particles make angles of  $30^\circ$  and  $45^\circ$  with the x-axis as shown in the figure. The ratio of their respective velocity is



- (1) 1 : 1 (2) 1 : 2  
 (3)  $1 : \sqrt{3}$  (4)  $\sqrt{3} : 1$

**Answer (3)**

34. A biconvex lens has radii of curvature, 20 cm each. If the refractive index of the material of the lens is 1.5, the power of the lens is
- (1) +20 D (2) +5 D  
 (3) Infinity (4) +2 D

**Answer (2)**

35. Match List-I with List-II

	List-I (Electromagnetic waves)		List-II (Wavelength)
(a)	AM radio waves	(i)	$10^{-10}$ m
(b)	Microwaves	(ii)	$10^2$ m
(c)	Infrared radiations	(iii)	$10^{-2}$ m
(d)	X-rays	(iv)	$10^{-4}$ m

Choose the correct answer from the options given below

- (1) (a) - (iii), (b) - (ii), (c) - (i), (d) - (iv)  
 (2) (a) - (iii), (b) - (iv), (c) - (ii), (d) - (i)  
 (3) (a) - (ii), (b) - (iii), (c) - (iv), (d) - (i)  
 (4) (a) - (iv), (b) - (iii), (c) - (ii), (d) - (i)

**Answer (3)**

## SECTION-B

36. A nucleus of mass number 189 splits into two nuclei having mass number 125 and 64. The ratio of radius of two daughter nuclei respectively is
- (1) 4 : 5 (2) 5 : 4  
(3) 25 : 16 (4) 1 : 1

**Answer (2)**

37. Two transparent media *A* and *B* are separated by a plane boundary. The speed of light in those media are  $1.5 \times 10^8$  m/s and  $2.0 \times 10^8$  m/s, respectively. The critical angle for a ray of light for these two media is
- (1)  $\sin^{-1}(0.750)$  (2)  $\tan^{-1}(0.500)$   
(3)  $\tan^{-1}(0.750)$  (4)  $\sin^{-1}(0.500)$

**Answer (1)**

38. A big circular coil of 1000 turns and average radius 10 m is rotating about its horizontal diameter at  $2 \text{ rad s}^{-1}$ . If the vertical component of earth's magnetic field at that place is  $2 \times 10^{-5}$  T and electrical resistance of the coil is  $12.56 \Omega$ , then the maximum induced current in the coil will be
- (1) 1.5 A (2) 1 A  
(3) 2 A (4) 0.25 A

**Answer (2)**

39. Match List-I with List-II

	List-I		List-II
(a)	Gravitational constant (G)	(i)	$[L^2T^{-2}]$
(b)	Gravitational potential energy	(ii)	$[M^{-1}L^3T^{-2}]$
(c)	Gravitational potential	(iii)	$[LT^{-2}]$
(d)	Gravitational intensity	(iv)	$[ML^2T^{-2}]$

Choose the correct answer from the options given below

- (1) (a) - (ii), (b) - (iv), (c) - (i), (d) - (iii) (2) (a) - (ii), (b) - (iv), (c) - (iii), (d) - (i)  
(3) (a) - (iv), (b) - (ii), (c) - (i), (d) - (iii) (4) (a) - (ii), (b) - (i), (c) - (iv), (d) - (iii)

**Answer (1)**

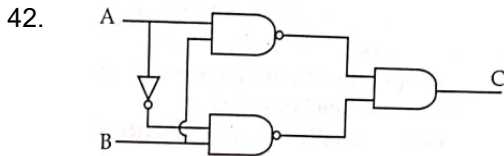
40. Given below are two statements : One is labelled as **Assertion (A)** and the other is labelled as **Reason (R)**.  
**Assertion (A):** The stretching of a spring is determined by the shear modulus of the material of the spring.  
**Reason (R):** A coil spring of copper has more tensile strength than a steel spring of same dimensions.  
 In the light of the above statements, choose the **most appropriate** answer from the options given below
- (1) Both **(A)** and **(R)** are true and **(R)** is not the correct explanation of **(A)**  
 (2) **(A)** is true but **(R)** is false  
 (3) **(A)** is false but **(R)** is true  
 (4) Both **(A)** and **(R)** are true and **(R)** is the correct explanation of **(A)**

**Answer (2)**

41. The area of a rectangular field (in  $\text{m}^2$ ) of length 55.3 m and breadth 25 m after rounding off the value for correct significant digits is
- (1) 1382 (2) 1382.5  
(3)  $14 \times 10^2$  (4)  $138 \times 10^1$

**Answer (3)**





The truth table for the given logic circuit is

A	B	C
0	0	1
0	1	0
1	0	0
1	1	1

A	B	C
0	0	0
0	1	1
1	0	0
1	1	1

A	B	C
0	0	1
0	1	0
1	0	1
1	1	0

A	B	C
0	0	0
0	1	1
1	0	1
1	1	0

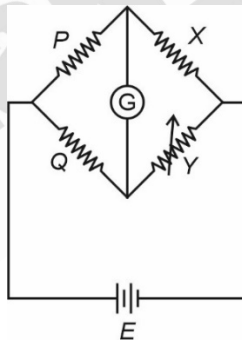
**Answer (2)**

43. The volume occupied by the molecules contained in 4.5 kg water at STP, if the intermolecular forces vanish away is

- (1)  $5.6 \times 10^3 \text{ m}^3$  (2)  $5.6 \times 10^{-3} \text{ m}^3$   
 (3)  $5.6 \text{ m}^3$  (4)  $5.6 \times 10^6 \text{ m}^3$

**Answer (3)**

44. A wheatstone bridge is used to determine the value of unknown resistance  $X$  by adjusting the variable resistance  $Y$  as shown in the figure. For the most precise measurement of  $X$ , the resistances  $P$  and  $Q$



- (1) Should be approximately equal and are small (2) Should be very large and unequal  
 (3) Do not play any significant role (4) Should be approximately equal to  $2X$

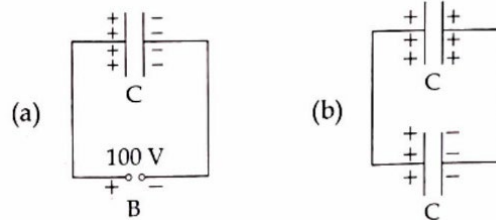
**Answer (1)**

45. A series LCR circuit with inductance  $10 \text{ H}$ , capacitance  $10 \mu\text{F}$ , resistance  $50 \Omega$  is connected to an ac source of voltage,  $V = 200\sin(100t)$  volt. If the resonant frequency of the LCR circuit is  $\nu_0$  and the frequency of the ac source is  $\nu$ , then

- (1)  $\nu_0 = \nu = \frac{50}{\pi} \text{ Hz}$  (2)  $\nu_0 = \frac{50}{\pi} \text{ Hz}$ ,  $\nu = 50 \text{ Hz}$   
 (3)  $\nu = 100 \text{ Hz}$ ;  $\nu_0 = \frac{100}{\pi} \text{ Hz}$  (4)  $\nu_0 = \nu = 50 \text{ Hz}$

**Answer (1)**

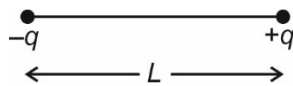
46. A capacitor of capacitance  $C = 900 \text{ pF}$  is charged fully by  $100 \text{ V}$  battery  $B$  as shown in figure (a). Then it is disconnected from the battery and connected to another uncharged capacitor of capacitance  $C = 900 \text{ pF}$  as shown in figure (b). The electrostatic energy stored by the system (b) is



- (1)  $3.25 \times 10^{-6} \text{ J}$  (2)  $2.25 \times 10^{-6} \text{ J}$   
 (3)  $1.5 \times 10^{-6} \text{ J}$  (4)  $4.5 \times 10^{-6} \text{ J}$

**Answer (2)**

47. Two point charges  $-q$  and  $+q$  are placed at a distance of  $L$ , as shown in the figure.



The magnitude of electric field intensity at a distance  $R (R \gg L)$  varies as:

- (1)  $\frac{1}{R^3}$  (2)  $\frac{1}{R^4}$   
 (3)  $\frac{1}{R^6}$  (4)  $\frac{1}{R^2}$

**Answer (1)**

48. A ball is projected with a velocity,  $10 \text{ ms}^{-1}$ , at an angle of  $60^\circ$  with the vertical direction. Its speed at the highest point of its trajectory will be

- (1)  $5\sqrt{3} \text{ ms}^{-1}$  (2)  $5 \text{ ms}^{-1}$   
 (3)  $10 \text{ ms}^{-1}$  (4) Zero

**Answer (1)**

49. From Ampere's circuital law for a long straight wire of circular cross-section carrying a steady current, the variation of magnetic field in the inside and outside region of the wire is

- (1) A linearly increasing function of distance upto the boundary of the wire and then linearly decreasing for the outside region.  
 (2) A linearly increasing function of distance  $r$  upto the boundary of the wire and then decreasing one with  $\frac{1}{r}$  dependence for the outside region.  
 (3) A linearly decreasing function of distance upto the boundary of the wire and then a linearly increasing one for the outside region.  
 (4) Uniform and remains constant for both the regions.

**Answer (2)**

50. Two pendulums of length  $121 \text{ cm}$  and  $100 \text{ cm}$  start vibrating in phase. At some instant, the two are at their mean position in the same phase. The minimum number of vibrations of the shorter pendulum after which the two are again in phase at the mean position is:

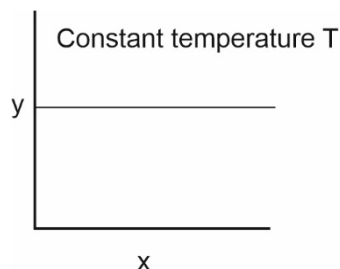
- (1) 9 (2) 10  
 (3) 8 (4) 11

**Answer (4)**

## CHEMISTRY

### SECTION-A

51. The given graph is a representation of kinetics of a reaction.

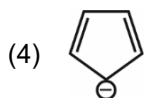
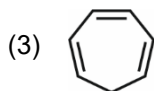
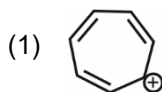


The y and x axes for zero and first order reactions, respectively are

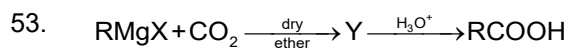
- (1) zero order (y = concentration and x = time), first order (y = rate constant and x = concentration)
- (2) zero order (y = rate and x = concentration), first order (y =  $t_{1/2}$  and x = concentration)
- (3) zero order (y = rate and x = concentration), first order (y = rate and x =  $t_{1/2}$ )
- (4) zero order (y = concentration and x = time), first order (y =  $t_{1/2}$  and x = concentration)

**Answer (2)**

52. Which compound amongst the following is **not** an aromatic compound?



**Answer (3)**



What is Y in the above reaction?

- (1)  $\text{R}_3\text{CO-Mg}^+\text{X}$
- (2)  $\text{RCOO-X}^+$
- (3)  $(\text{RCOO})_2\text{Mg}$
- (4)  $\text{RCOO-Mg}^+\text{X}$

**Answer (4)**

54. Which of the following statement is not correct about diborane?
- (1) The four terminal B-H bonds are two centre two electron bonds.
  - (2) The four terminal Hydrogen atoms and the two Boron atoms lie in one plane.
  - (3) Both the Boron atoms are  $sp^2$  hybridised.
  - (4) There are two 3-centre-2-electron bonds.

**Answer (3)**

55. Gadolinium has a low value of third ionisation enthalpy because of
- (1) high exchange enthalpy
  - (2) high electronegativity
  - (3) high basic character
  - (4) small size

**Answer (1)**

56. Which one is not correct mathematical equation for Dalton's Law of partial pressure? Here  $p$  = total pressure of gaseous mixture

$$(1) \quad p = n_1 \frac{RT}{V} + n_2 \frac{RT}{V} + n_3 \frac{RT}{V}$$

$$(2) \quad p_i = \chi_i p,$$

where  $p_i$  = partial pressure of  $i^{\text{th}}$  gas

$\chi_i$  = mole fraction of  $i^{\text{th}}$  gas in gaseous mixture

$$(3) \quad p_i = \chi_i p_i^\circ,$$

where  $\chi_i$  = mole fraction of  $i^{\text{th}}$  gas in gaseous mixture

$p_i^\circ$  = pressure of  $i^{\text{th}}$  gas in pure state

$$(4) \quad p = p_1 + p_2 + p_3$$

**Answer (3)**

57. Given below are two statements

**Statement I** : The boiling points of the following hydrides of group 16 elements increases in the order –  
 $\text{H}_2\text{O} < \text{H}_2\text{S} < \text{H}_2\text{Se} < \text{H}_2\text{Te}$

**Statement II** : The boiling points of these hydrides increase with increase in molar mass.

In the light of the above statements, choose the most appropriate answer from the options given below :

- (1) Both **Statement I** and **Statement II** are incorrect
- (2) **Statement I** is correct but **Statement II** is incorrect
- (3) **Statement I** is incorrect but **Statement II** is correct
- (4) Both **Statement I** and **Statement II** are correct

**Answer (1)**

58. Given below are two statements

**Statement I:** The acidic strength of monosubstituted nitrophenol is higher than phenol because of electron withdrawing nitro group.

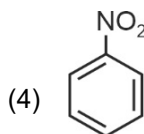
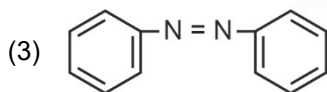
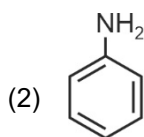
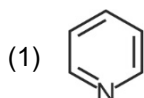
**Statement II:** *o*-nitrophenol, *m*-nitrophenol and *p*-nitrophenol will have same acidic strength as they have one nitro group attached to the phenolic ring.

In the light of the above statements, choose the **most appropriate** answer from the options given below:

- (1) Both **Statement I** and **Statement II** are incorrect.
- (2) **Statement I** is correct but **Statement II** is incorrect.
- (3) **Statement I** is incorrect but **Statement II** is correct.
- (4) Both **Statement I** and **Statement II** are correct.

**Answer (2)**

59. The Kjeldahl's method for the estimation of nitrogen can be used to estimate the amount of nitrogen in which one of the following compounds?



**Answer (2)**

60. Match **List-I** with **List-II**.

<b>List-I</b> <b>(Drug class)</b>	<b>List-II</b> <b>(Drug molecule)</b>
(a) Antacids	(i) Salvarsan
(b) Antihistamines	(ii) Morphine
(c) Analgesics	(iii) Cimetidine
(d) Antimicrobials	(iv) Seldane

Choose the correct answer from the options given below :

- (1) (a) - (iii), (b) - (iv), (c) - (ii), (d) - (i)
- (2) (a) - (i), (b) - (iv), (c) - (ii), (d) - (iii)
- (3) (a) - (iv), (b) - (iii), (c) - (i), (d) - (ii)
- (4) (a) - (iii), (b) - (ii), (c) - (iv), (d) - (i)

**Answer (1)**

61. The IUPAC name of an element with atomic number 119 is

- (1) unnilennium
- (2) unununnium
- (3) ununoctium
- (4) ununennium

**Answer (4)**

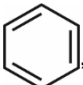
62. Amongst the following which one will have maximum 'lone pair - lone pair' electron repulsions?

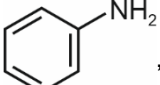
- (1)  $\text{IF}_5$
- (2)  $\text{SF}_4$
- (3)  $\text{XeF}_2$
- (4)  $\text{ClF}_3$

**Answer (3)**

63. Which of the following sequence of reactions is suitable to synthesize chlorobenzene?

(1) Phenol,  $\text{NaNO}_2$ ,  $\text{HCl}$ ,  $\text{CuCl}$

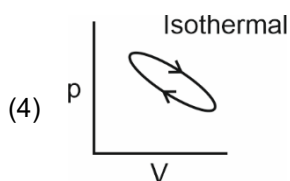
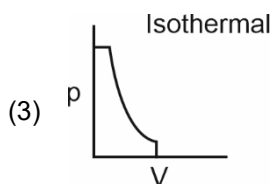
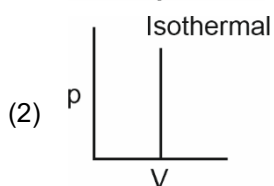
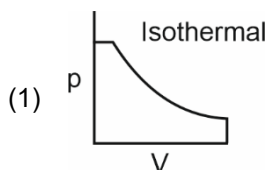
(2) ,  $\text{HCl}$

(3) ,  $\text{HCl}$ , Heating

(4) Benzene,  $\text{Cl}_2$ , anhydrous  $\text{FeCl}_3$

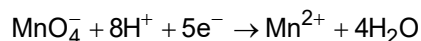
**Answer (4)**

64. Which of the following p-V curve represents maximum work done?

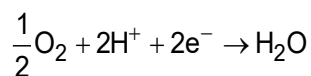


**Answer (1)**

65. Given below are half cell reactions:



$$E_{\text{Mn}^{2+}/\text{MnO}_4^-}^\circ = -1.510 \text{ V}$$



$$E_{\text{O}_2/\text{H}_2\text{O}}^\circ = +1.223 \text{ V}$$

Will the permanganate ion,  $\text{MnO}_4^-$  liberate  $\text{O}_2$  from water in the presence of an acid?

- (1) No, because  $E_{\text{cell}}^\circ = -0.287 \text{ V}$
- (2) Yes, because  $E_{\text{cell}}^\circ = +2.733 \text{ V}$
- (3) No, because  $E_{\text{cell}}^\circ = -2.733 \text{ V}$
- (4) Yes, because  $E_{\text{cell}}^\circ = +0.287 \text{ V}$

**Answer (4)**

66. The IUPAC name of the complex-

$[\text{Ag}(\text{H}_2\text{O})_2][\text{Ag}(\text{CN})_2]$  is:

- (1) diaquasilver(II) dicyanidoargentate(II)
- (2) dicyanidosilver(I) diaquaargentate(I)
- (3) diaquasilver(I) dicyanidoargentate(I)
- (4) dicyanidosilver(II) diaquaargentate(II)

**Answer (3)**

67. Identify the incorrect statement from the following

- (1) The oxidation number of K in  $\text{KO}_2$  is +4.
- (2) Ionisation enthalpy of alkali metals decreases from top to bottom in the group.
- (3) Lithium is the strongest reducing agent among the alkali metals.
- (4) Alkali metals react with water to form their hydroxides.

**Answer (1)**

68. What mass of 95% pure  $\text{CaCO}_3$  will be required to neutralise 50 mL of 0.5 M HCl solution according to the following reaction?



[Calculate upto second place of decimal point]

- (1) 1.32 g
- (2) 3.65 g
- (3) 9.50 g
- (4) 1.25 g

**Answer (1)**

69. Given below are two statements

**Statement I:** Primary aliphatic amines react with  $\text{HNO}_2$  to give unstable diazonium salts.

**Statement II:** Primary aromatic amines react with  $\text{HNO}_2$  to form diazonium salts which are stable even above 300 K. In the light of the above statements, choose the most **appropriate** answer from the options given below

- (1) Both Statement I and Statement II are incorrect.
- (2) Statement I is correct but Statement II is incorrect.
- (3) Statement I is incorrect but Statement II is correct.
- (4) Both Statement I and Statement II are correct.

**Answer (2)**

70. Which statement regarding polymers is **not correct**?

- (1) Fibers possess high tensile strength
- (2) Thermoplastic polymers are capable of repeatedly softening and hardening on heating and cooling respectively
- (3) Thermosetting polymers are reusable
- (4) Elastomers have polymer chains held together by weak intermolecular forces

**Answer (3)**

71. The **incorrect** statement regarding chirality is

- (1) The product obtained by  $\text{S}_{\text{N}}2$  reaction of haloalkane having chirality at the reactive site shows inversion of configuration
- (2) Enantiomers are superimposable mirror images on each other
- (3) A racemic mixture shows zero optical rotation
- (4)  $\text{S}_{\text{N}}1$  reaction yields 1 : 1 mixture of both enantiomers

**Answer (2)**

72. Given below are two statements

**Statement I:** In the coagulation of a negative sol, the flocculating power of the three given ions is in the order  $\text{Al}^{3+} > \text{Ba}^{2+} > \text{Na}^+$

**Statement II:** In the coagulation of a positive sol, the flocculating power of the three given salts is in the order  $\text{NaCl} > \text{Na}_2\text{SO}_4 > \text{Na}_3\text{PO}_4$

In the light of the above statements, choose the most **appropriate** answer from the options given below

- (1) Both Statement I and Statement II are incorrect.
- (2) Statement I is correct but Statement II is incorrect.
- (3) Statement I is incorrect but Statement II is correct.
- (4) Both Statement I and Statement II are correct.

**Answer (2)**



73. Match **List-I** with **List-II**.

<b>List-I</b> <b>(Hydrides)</b>	<b>List-II</b> <b>(Nature)</b>
(a) $MgH_2$	(i) Electron precise
(b) $GeH_4$	(ii) Electron deficient
(c) $B_2H_6$	(iii) Electron rich
(d) HF	(iv) Ionic

Choose the correct answer from the options given below

- (1) (a) – (iii), (b) – (i), (c) – (ii), (d) – (iv)
- (2) (a) – (i), (b) – (ii), (c) – (iv), (d) – (iii)
- (3) (a) – (ii), (b) – (iii), (c) – (iv), (d) – (i)
- (4) (a) – (iv), (b) – (i), (c) – (ii), (d) – (iii)

**Answer (4)**

74. Match **List-I** with **List-II**

<b>List-I</b>	<b>List-II</b>
(a) Li	(i) absorbent for carbon dioxide
(b) Na	(ii) electrochemical cells
(c) KOH	(iii) coolant in fast breeder reactors
(d) Cs	(iv) photoelectric cell

Choose the correct answer from the options given below :

- (1) (a) - (iii), (b) – (iv), (c) – (ii), (d) – (i)
- (2) (a) - (i), (b) – (iii), (c) – (iv), (d) – (ii)
- (3) (a) - (ii), (b) – (iii), (c) – (i), (d) – (iv)
- (4) (a) - (iv), (b) – (i), (c) – (iii), (d) – (ii)

**Answer (3)**

75. Given below are two statements: one is labelled as **Assertion (A)** and the other is labelled as **Reason (R)**.

**Assertion (A):** In a particular point defect, an ionic solid is electrically neutral, even if few of its cations are missing from its unit cells.

**Reason (R):** In an ionic solid, Frenkel defect arises due to dislocation of cation from its lattice site to interstitial site, maintaining overall electrical neutrality.

In the light of the above statements, choose the most appropriate answer from the options given below:

- (1) Both (A) and (R) are correct but (R) is not the correct explanation of (A)
- (2) (A) is correct but (R) is not correct
- (3) (A) is not correct but (R) is correct
- (4) Both (A) and (R) are correct and (R) is the correct explanation of (A)

**Answer (1)**

76. The **incorrect** statement regarding enzymes is
- (1) Like chemical catalysts enzymes reduce the activation energy of bio processes.
  - (2) Enzymes are polysaccharides.
  - (3) Enzymes are very specific for a particular reaction and substrate.
  - (4) Enzymes are biocatalysts.

**Answer (2)**

77. Match **List-I** with **List-II**.

<b>List-I</b> <b>(Products formed)</b>	<b>List-II</b> <b>(Reaction of carbonyl compound with)</b>
(a) Cyanohydrin	(i) $\text{NH}_2\text{OH}$
(b) Acetal	(ii) $\text{RNH}_2$
(c) Schiff's base	(iii) alcohol
(d) Oxime	(iv) $\text{HCN}$

Choose the correct answer from the options given below

- (1) (a) – (ii), (b) – (iii), (c) – (iv), (d) – (i)
- (2) (a) – (i), (b) – (iii), (c) – (ii), (d) – (iv)
- (3) (a) – (iv), (b) – (iii), (c) – (ii), (d) – (i)
- (4) (a) – (iii), (b) – (iv), (c) – (ii), (d) – (i)

**Answer (3)**

78. In one molal solution that contains 0.5 mole of a solute, there is
- (1) 500 g of solvent
  - (2) 100 mL of solvent
  - (3) 1000 g of solvent
  - (4) 500 mL of solvent

**Answer (1)**

79. Choose the correct statement:
- (1) Diamond is covalent and graphite is ionic.
  - (2) Diamond is  $\text{sp}^3$  hybridised and graphite is  $\text{sp}^2$  hybridized.
  - (3) Both diamond and graphite are used as dry lubricants.
  - (4) Diamond and graphite have two dimensional network.

**Answer (2)**

80. Which amongst the following is **incorrect** statement?
- (1)  $\text{C}_2$  molecule has four electrons in its two degenerate  $\pi$  molecular orbitals
  - (2)  $\text{H}_2^+$  ion has one electron
  - (3)  $\text{O}_2^+$  ion is diamagnetic
  - (4) The bond orders of  $\text{O}_2^+$ ,  $\text{O}_2$ ,  $\text{O}_2^-$  and  $\text{O}_2^{2-}$  are 2.5, 2, 1.5 and 1, respectively

**Answer (3)**

81. Given below are two statements: one is labelled as **Assertion (A)** and the other is labelled as **Reason (R)**.

**Assertion (A):** ICl is more reactive than I<sub>2</sub>.

**Reason (R):** I-Cl bond is weaker than I-I bond.

In the light of the above statements, choose the most **appropriate** answer from the options given below:

- (1) Both (A) and (R) are correct but (R) is not the correct explanation of (A).
- (2) (A) is correct but (R) is not correct
- (3) (A) is not correct but (R) is correct
- (4) Both (A) and (R) are correct and (R) is the correct explanation of (A).

**Answer (4)**

82. Given below are two statements :

**Statement I :** The boiling points of aldehydes and ketones are higher than hydrocarbons of comparable molecular masses because of weak molecular association in aldehydes and ketones due to dipole - dipole interactions.

**Statement II :** The boiling points of aldehydes and ketones are lower than the alcohols of similar molecular masses due to the absence of H-bonding.

In the light of the above statements, choose the **most appropriate** answer from the given below

- (1) Both **Statement I** and **Statement II** are incorrect
- (2) **Statement I** is correct but **Statement II** is incorrect
- (3) **Statement I** is incorrect but **Statement II** is correct
- (4) Both **Statement I** and **Statement II** are correct

**Answer (4)**

83. The pH of the solution containing 50 mL each of 0.10 M sodium acetate and 0.01 M acetic acid is

[Given pK<sub>a</sub> of CH<sub>3</sub>COOH = 4.57]

- (1) 3.57
- (2) 4.57
- (3) 2.57
- (4) 5.57

**Answer (4)**

84. Identify the **incorrect** statement from the following.

- (1) All the five 4*d* orbitals have shapes similar to the respective 3*d* orbitals.
- (2) In an atom, all the five 3*d* orbitals are equal in energy in free state.
- (3) The shapes of *d*<sub>xy</sub>, *d*<sub>yz</sub> and *d*<sub>zx</sub> orbitals are similar to each other; and *d*<sub>x<sup>2</sup>-y<sup>2</sup></sub> and *d*<sub>z<sup>2</sup></sub> are similar to each other.
- (4) All the five 5*d* orbitals are different in size when compared to the respective 4*d* orbitals.

**Answer (3)**

85. At 298 K, the standard electrode potentials of  $\text{Cu}^{2+} / \text{Cu}$ ,  $\text{Zn}^{2+} / \text{Zn}$ ,  $\text{Fe}^{2+} / \text{Fe}$  and  $\text{Ag}^+ / \text{Ag}$  are 0.34 V, -0.76 V, -0.44 V and 0.80 V, respectively.

On the basis of standard electrode potential, predict which of the following reaction cannot occur?

- (1)  $\text{CuSO}_4(\text{aq}) + \text{Fe}(\text{s}) \rightarrow \text{FeSO}_4(\text{aq}) + \text{Cu}(\text{s})$
- (2)  $\text{FeSO}_4(\text{aq}) + \text{Zn}(\text{s}) \rightarrow \text{ZnSO}_4(\text{aq}) + \text{Fe}(\text{s})$
- (3)  $2\text{CuSO}_4(\text{aq}) + 2\text{Ag}(\text{s}) \rightarrow 2\text{Cu}(\text{s}) + \text{Ag}_2\text{SO}_4(\text{aq})$
- (4)  $\text{CuSO}_4(\text{aq}) + \text{Zn}(\text{s}) \rightarrow \text{ZnSO}_4(\text{aq}) + \text{Cu}(\text{s})$

**Answer (3)**

## SECTION-B

86. The order of energy absorbed which is responsible for the color of complexes

- (A)  $[\text{Ni}(\text{H}_2\text{O})_2(\text{en})_2]^{2+}$
- (B)  $[\text{Ni}(\text{H}_2\text{O})_4(\text{en})]^{2+}$  and
- (C)  $[\text{Ni}(\text{en})_3]^{2+}$

is

- (1) (C) > (B) > (A)
- (2) (C) > (A) > (B)
- (3) (B) > (A) > (C)
- (4) (A) > (B) > (C)

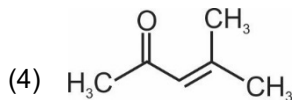
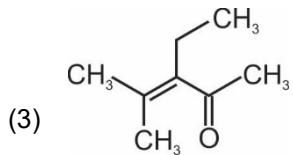
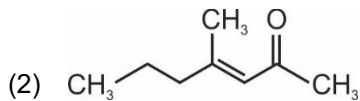
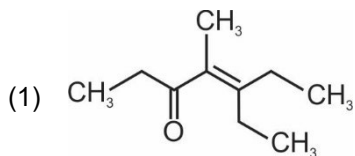
**Answer (2)**

87. A 10.0 L flask contains 64 g of oxygen at 27°C. (Assume  $\text{O}_2$  gas is behaving ideally). The pressure inside the flask in bar is (Given  $R = 0.0831 \text{ L bar K}^{-1} \text{ mol}^{-1}$ )

- (1) 498.6
- (2) 49.8
- (3) 4.9
- (4) 2.5

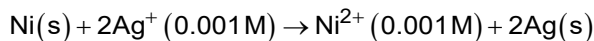
**Answer (3)**

88. Which one of the following is not formed when acetone reacts with 2-pentanone in the presence of dilute NaOH followed by heating?



**Answer (1)**

89. Find the emf of the cell in which the following reaction takes place at 298 K

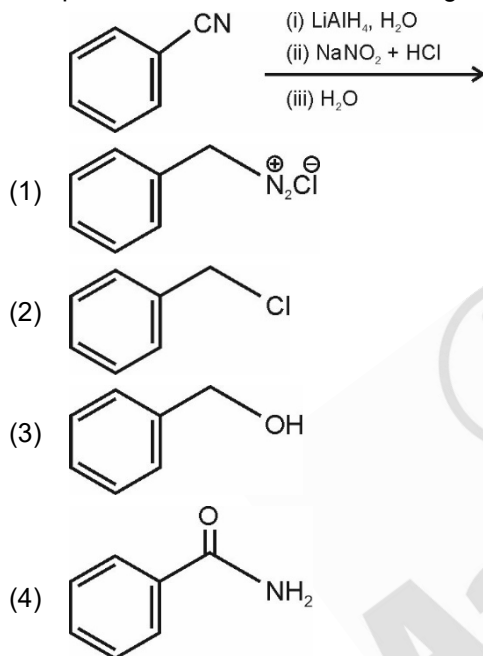


$$\left( \text{Given that } E_{\text{cell}}^{\circ} = 10.5 \text{ V, } \frac{2.303 RT}{F} = 0.059 \text{ at } 298 \text{ K} \right)$$

- (1) 1.385 V
- (2) 0.9615 V
- (3) 1.05 V
- (4) 1.0385 V

**Answer (NA)**

90. The product formed from the following reaction sequence is



**Answer (3)**

91. Copper crystallises in fcc unit cell with cell edge length of  $3.608 \times 10^{-8}$  cm. The density of copper is  $8.92 \text{ g cm}^{-3}$ . Calculate the atomic mass of copper.

- (1) 31.55 u
- (2) 60 u
- (3) 65 u
- (4) 63.1 u

**Answer (4)**

92.  $3\text{O}_2(\text{g}) \rightleftharpoons 2\text{O}_3(\text{g})$

for the above reaction at 298 K,  $K_c$  is found to be  $3.0 \times 10^{-59}$ . If the concentration of  $\text{O}_2$  at equilibrium is 0.040 M then concentration of  $\text{O}_3$  in M is

- (1)  $1.9 \times 10^{-63}$
- (2)  $2.4 \times 10^{31}$
- (3)  $1.2 \times 10^{21}$
- (4)  $4.38 \times 10^{-32}$

**Answer (4)**

93. Given below are two statements:

**Statement I:** In Lucas test, primary, secondary and tertiary alcohols are distinguished on the basis of their reactivity with conc. HCl + ZnCl<sub>2</sub>, known as Lucas Reagent.

**Statement II:** Primary alcohols are most reactive and immediately produce turbidity at room temperature on reaction with Lucas Reagent.

In the light of the above statements, choose the most appropriate answer from the options given below:

- (1) Both Statement I and Statement II are incorrect
- (2) Statement I is correct but Statement II is incorrect
- (3) Statement I is incorrect but Statement II is correct
- (4) Both Statement I and Statement II are correct

**Answer (2)**

94. In the neutral or faintly alkaline medium, KMnO<sub>4</sub> oxidises iodide into iodate. The change in oxidation state of manganese in this reaction is from

- (1) +6 to +4
- (2) +7 to +3
- (3) +6 to +5
- (4) +7 to +4

**Answer (4)**

95. Match List-I with List-II.

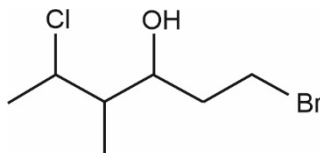
List-I (Ores)	List-II (Composition)
(a) Haematite	(i) Fe <sub>3</sub> O <sub>4</sub>
(b) Magnetite	(ii) ZnCO <sub>3</sub>
(c) Calamine	(iii) Fe <sub>2</sub> O <sub>3</sub>
(d) Kaolinite	(iv) [Al <sub>2</sub> (OH) <sub>4</sub> Si <sub>2</sub> O <sub>5</sub> ]

Choose the correct answer from the options given below:

- (1) (a)-(iii), (b)-(i), (c)-(ii), (d)-(iv)
- (2) (a)-(iii), (b)-(i), (c)-(iv), (d)-(ii)
- (3) (a)-(i), (b)-(iii), (c)-(ii), (d)-(iv)
- (4) (a)-(i), (b)-(ii), (c)-(iii), (d)-(iv)

**Answer (1)**

96. The correct IUPAC name of the following compound is



- (1) 6-bromo-2-chloro-4-methylhexan-4-ol
- (2) 1-bromo-4-methyl-5-chlorohexan-3-ol
- (3) 6-bromo-4-methyl-2-chlorohexan-4-ol
- (4) 1-bromo-5-chloro-4-methylhexan-3-ol

**Answer (4)**

97. If radius of second Bohr orbit of the  $\text{He}^+$  ion is 105.8 pm, what is the radius of third Bohr orbit of  $\text{Li}^{2+}$  ion?
- (1) 15.87 pm
  - (2) 1.587 pm
  - (3) 158.7 Å
  - (4) 158.7 pm

**Answer (4)**

98. Compound X on reaction with  $\text{O}_3$  followed by  $\text{Zn}/\text{H}_2\text{O}$  gives formaldehyde and 2-methyl propanal as products. The compound X is
- (1) 2-Methylbut-1-ene
  - (2) 2-Methylbut-2-ene
  - (3) Pent-2-ene
  - (4) 3-Methylbut-1-ene

**Answer (4)**

99. For a first order reaction  $\text{A} \rightarrow \text{Products}$ , initial concentration of A is 0.1 M, which becomes 0.001 M after 5 minutes. Rate constant for the reaction in  $\text{min}^{-1}$  is
- (1) 0.9212
  - (2) 0.4606
  - (3) 0.2303
  - (4) 1.3818

**Answer (1)**

100. The pollution due to oxides of sulphur gets enhanced due to the presence of:
- (a) particulate matter
  - (b) ozone
  - (c) hydrocarbons
  - (d) hydrogen peroxide

Choose the most appropriate answer from the options given below:

- (1) (a), (b), (d) only
- (2) (b), (c), (d) only
- (3) (a), (c), (d) only
- (4) (a), (d) only

**Answer (1)**

**BOTANY****SECTION-A**

101. Which of the following is **not** a method of *ex situ* conservation?

- (1) National Parks (2) Micropropagation  
(3) Cryopreservation (4) *In vitro* fertilization

**Answer (1)**

102. Given below are two statements :

**Statement I :**

The primary CO<sub>2</sub> acceptor in C<sub>4</sub> plants is phosphoenolpyruvate and is found in the mesophyll cells.

**Statement II :**

Mesophyll cells of C<sub>4</sub> plants lack RuBisCo enzyme. In the light of the above statements, choose the **correct** answer from the options given below:

- (1) Both **Statement I** and **Statement II** are incorrect  
(2) **Statement I** is correct but **Statement II** is incorrect  
(3) **Statement I** is incorrect but **Statement II** is correct  
(4) Both **Statement I** and **Statement II** are correct

**Answer (4)**

103. XO type of sex determination can be found in :

- (1) Birds (2) Grasshoppers  
(3) Monkeys (4) *Drosophila*

**Answer (2)**

104. In old trees the greater part of secondary xylem is dark brown and resistant to insect attack due to :

- (a) secretion of secondary metabolites and their deposition in the lumen of vessels.  
(b) deposition of organic compounds like tannins and resins in the central layers of stem.  
(c) deposition of suberin and aromatic substances in the outer layer of stem.  
(d) deposition of tannins, gum, resin and aromatic substances in the peripheral layers of stem.  
(e) presence of parenchyma cells, functionally active xylem elements and essential oils.

Choose the **correct** answer from the options given below:

- (1) (c) and (d) Only (2) (d) and (e) Only  
(3) (b) and (d) Only (4) (a) and (b) Only

**Answer (4)**

105. Which of the following is **not** observed during apoplastic pathway?

- (1) The movement does not involve crossing of cell membrane  
(2) The movement is aided by cytoplasmic streaming  
(3) Apoplast is continuous and does not provide any barrier to water movement  
(4) Movement of water occurs through intercellular spaces and wall of the cells

**Answer (2)**



106. Given below are two statements : one is labelled as

**Assertion (A)** and the other is labelled as **Reason (R)**.

**Assertion (A) :**

Polymerase chain reaction is used in DNA amplification.

**Reason (R) :**

The ampicillin resistant gene is used as a selectable marker to check transformation

In the light of the above statements, choose the **correct** answer from the options given below :

- (1) Both **(A)** and **(R)** are correct but **(R)** is not the correct explanation of **(A)**
- (2) **(A)** is correct but **(R)** is not correct
- (3) **(A)** is not correct but **(R)** is correct
- (4) Both **(A)** and **(R)** are correct and **(R)** is the correct explanation of **(A)**

**Answer (1)**

107. Which one of the following statement is **not true** regarding gel electrophoresis technique?

- (1) The separated DNA fragments are stained by using ethidium bromide.
- (2) The presence of chromogenic substrate gives blue coloured DNA bands on the gel.
- (3) Bright orange coloured bands of DNA can be observed in the gel when exposed to UV light.
- (4) The process of extraction of separated DNA strands from gel is called elution.

**Answer (2)**

108. The gaseous plant growth regulator is used in plants to :

- (1) promote root growth and root hair formation to increase the absorption surface
- (2) help overcome apical dominance
- (3) kill dicotyledonous weeds in the fields
- (4) speed up the malting process

**Answer (1)**

109. What amount of energy is released from glucose during lactic acid fermentation?

- |                   |                       |
|-------------------|-----------------------|
| (1) More than 18% | (2) About 10%         |
| (3) Less than 7%  | (4) Approximately 15% |

**Answer (3)**

110. Read the following statements about the vascular bundles :

- (a) In roots, xylem and phloem in a vascular bundle are arranged in an alternate manner along the different radii.
- (b) Conjoint closed vascular bundles do not possess cambium
- (c) In open vascular bundles, cambium is present in between xylem and phloem
- (d) The vascular bundles of dicotyledonous stem possess endarch protoxylem
- (e) In monocotyledonous root, usually there are more than six xylem bundles present

Choose the **correct answer** from the options given below :

- |                                |                                |
|--------------------------------|--------------------------------|
| (1) (b), (c), (d) and (e) Only | (2) (a), (b), (c) and (d) Only |
| (3) (a), (c), (d) and (e) Only | (4) (a), (b) and (d) Only      |

**Answer (NA) No option is correct**

111. Identify the **correct** set of statements :

- (a) The leaflets are modified into pointed hard thorns in *Citrus* and *Bougainvillea*
- (b) Axillary buds form slender and spirally coiled tendrils in cucumber and pumpkin
- (c) Stem is flattened and fleshy in *Opuntia* and modified to perform the function of leaves
- (d) *Rhizophora* shows vertically upward growing roots that help to get oxygen for respiration
- (e) Subaerially growing stems in grasses and strawberry help in vegetative propagation

Choose the **correct answer** from the options given below :

- (1) (a) and (d) Only
- (2) (b), (c), (d) and (e) Only
- (3) (a), (b), (d) and (e) Only
- (4) (b) and (c) Only

**Answer (2)**

112. Which one of the following plants does **not** show plasticity?

- (1) Coriander
- (2) Buttercup
- (3) Maize
- (4) Cotton

**Answer (3)**

113. Given below are two statements :

**Statement I :**

Cleistogamous flowers are invariably autogamous

**Statement II :**

Cleistogamy is disadvantageous as there is no chance for cross pollination

In the light of the above statements, choose the **correct** answer from the options given below :

- (1) Both **Statement I** and **Statement II** are incorrect
- (2) **Statement I** is correct but **Statement II** is incorrect
- (3) **Statement I** is incorrect but **Statement II** is correct
- (4) Both **Statement I** and **Statement II** are correct

**Answer (4)**

114. "Girdling Experiment" was performed by Plant Physiologists to identify the plant tissue through which:

- (1) food is transported
- (2) for both water and food transportation
- (3) osmosis is observed
- (4) water is transported

**Answer (1)**

115. Hydrocolloid carrageen is obtained from:

- (1) Phaeophyceae and Rhodophyceae
- (2) Rhodophyceae only
- (3) Phaeophyceae only
- (4) Chlorophyceae and Phaeophyceae

**Answer (2)**

116. Given below are two statements :

**Statement I :**

Mendel studied seven pairs of contrasting traits in pea plants and proposed the Laws of Inheritance.

**Statement II :**

Seven characters examined by Mendel in his experiment on pea plants were seed shape and colour, flower colour, pod shape and colour, flower position and stem height.

In the light of the above statements, choose the correct answer from the options given below :

- (1) Both **Statement I** and **Statement II** are incorrect
- (2) **Statement I** is correct but **Statement II** is incorrect
- (3) **Statement I** is incorrect but **Statement II** is correct
- (4) Both **Statement I** and **Statement II** are correct

**Answer (4)**

117. Production of Cucumber has increased manifold in recent years. Application of which of the following phytohormones has resulted in this increased yield as the hormone is known to produce female flowers in the plants :

- |                 |              |
|-----------------|--------------|
| (1) Gibberellin | (2) Ethylene |
| (3) Cytokinin   | (4) ABA      |

**Answer (2)**

118. The process of translation of mRNA to proteins begins as soon as :

- (1) The larger subunit of ribosome encounters mRNA
- (2) Both the subunits join together to bind with mRNA
- (3) The tRNA is activated and the larger subunit of ribosome encounters mRNA
- (4) The small subunit of ribosome encounters mRNA

**Answer (4)**

119. Habitat loss and fragmentation, over exploitation, alien species invasion and co-extinction are causes for:

- |                 |                          |
|-----------------|--------------------------|
| (1) Competition | (2) Biodiversity loss    |
| (3) Natality    | (4) Population explosion |

**Answer (2)**

120. Read the following statements and choose the set of **correct** statements :

- (a) Euchromatin is loosely packed chromatin
- (b) Heterochromatin is transcriptionally active
- (c) Histone octamer is wrapped by negatively charged DNA in nucleosome
- (d) Histones are rich in lysine and arginine
- (e) A typical nucleosome contains 400 bp of DNA helix

Choose the correct answer from the options given below :

- |                        |                        |
|------------------------|------------------------|
| (1) (a), (c), (d) Only | (2) (b), (e) Only      |
| (3) (a), (c), (e) Only | (4) (b), (d), (e) Only |

**Answer (1)**

121. Which of the following is **incorrectly** matched?

- (1) *Ulothrix* – Mannitol (2) *Porphyra* – Floridian Starch  
(3) *Volvox* – Starch (4) *Ectocarpus* – Fucoxanthin

**Answer (1)**

122. The device which can remove particulate matter present in the exhaust from a thermal power plant is :

- (1) Incinerator (2) Electrostatic Precipitator  
(3) Catalytic Converter (4) STP

**Answer (2)**

123. DNA polymorphism forms the basis of :

- (1) DNA finger printing  
(2) Both genetic mapping and DNA finger printing  
(3) Translation  
(4) Genetic mapping

**Answer (2)**

124. Which one of the following statements cannot be connected to Predation?

- (1) It might lead to extinction of a species  
(2) Both the interacting species are negatively impacted  
(3) It is necessitated by nature to maintain the ecological balance  
(4) It helps in maintaining species diversity in a community

**Answer (2)**

125. Which one of the following never occurs during mitotic cell division?

- (1) Movement of centrioles towards opposite poles  
(2) Pairing of homologous chromosomes  
(3) Coiling and condensation of the chromatids  
(4) Spindle fibres attach to kinetochores of chromosomes

**Answer (2)**

126. Exoskeleton of arthropods is composed of :

- (1) Cellulose (2) Chitin  
(3) Glucosamine (4) Cutin

**Answer (2)**

127. What is the net gain of ATP when each molecule of glucose is converted to two molecules of pyruvic acid?

- (1) Six (2) Two  
(3) Eight (4) Four

**Answer (2)**

128. Which one of the following plants shows vexillary aestivation and diadelphous stamens?

- (1) *Pisum sativum* (2) *Allium cepa*  
(3) *Solanum nigrum* (4) *Colchicum autumnale*

**Answer (1)**

129. Identify the **incorrect** statement related to Pollination :
- (1) Pollination by wind is more common amongst abiotic pollination
  - (2) Flowers produce foul odours to attract flies and beetles to get pollinated
  - (3) Moths and butterflies are the most dominant pollinating agents among insects
  - (4) Pollination by water is quite rare in flowering plants

**Answer (3)**

130. Given below are two statements:

**Statement I:** Decomposition is a process in which the detritus is degraded into simpler substances by microbes.

**Statement II:** Decomposition is faster if the detritus is rich in lignin and chitin.

In the light of the above statements, choose the **correct** answer from the options given below:

- (1) Both **Statement I** and **Statement II** are incorrect
- (2) **Statement I** is correct but **Statement II** is incorrect
- (3) **Statement I** is incorrect but **Statement II** is correct
- (4) Both **Statement I** and **Statement II** are correct

**Answer (2)**

131. The appearance of recombination nodules on homologous chromosomes during meiosis characterizes :

- (1) Bivalent
- (2) Sites at which crossing over occurs
- (3) Terminalization
- (4) Synaptonemal complex

**Answer (2)**

132. Which one of the following produces nitrogen fixing nodules on the roots of *Alnus*?

- (1) *Frankia*
- (2) *Rhodospirillum*
- (3) *Beijerinckia*
- (4) *Rhizobium*

**Answer (1)**

133. Which one of the following is **not** true regarding the release of energy during ATP synthesis through chemiosmosis? It involves:

- (1) Breakdown of electron gradient
- (2) Movement of protons across the membrane to the stroma
- (3) Reduction of NADP to NADPH<sub>2</sub> on the stroma side of the membrane
- (4) Breakdown of proton gradient

**Answer (1)**

134. The flowers are Zygomorphic in:

- (a) Mustard
- (b) Gulmohar
- (c) *Cassia*
- (d) *Datura*
- (e) Chilly

Choose the **correct answer** from the options given below:

- (1) (b), (c) Only
- (2) (d), (e) Only
- (3) (c), (d), (e) Only
- (4) (a), (b), (c) Only

**Answer (1)**

135. Match List-I with List-II

	List-I		List-II
(a)	Manganese	(i)	Activates the enzyme catalase
(b)	Magnesium	(ii)	Required for pollen germination
(c)	Boron	(iii)	Activates enzymes of respiration
(d)	Iron	(iv)	Functions in splitting of water during photosynthesis

Choose the **correct answer** from the options given below :

- (1) (a)-(iv), (b)-(iii), (c)-(ii), (d)-(i)                      (2) (a)-(iv), (b)-(i), (c)-(ii), (d)-(iii)  
(3) (a)-(iii), (b)-(i), (c)-(ii), (d)-(iv)                      (4) (a)-(iii), (b)-(iv), (c)-(i), (d)-(ii)

**Answer (1)****SECTION-B**

136. Addition of more solutes in a given solution will :

- (1) lower its water potential    (2) make its water potential zero  
(3) not affect the water potential at all    (4) raise its water potential

**Answer (1)**

137. Read the following statements on lipids and find out correct set of statements:

- (a) Lecithin found in the plasma membrane is a glycolipid  
(b) Saturated fatty acids possess one or more  $c = c$  bonds  
(c) Gingely oil has lower melting point, hence remains as oil in winter  
(d) Lipids are generally insoluble in water but soluble in some organic solvents  
(e) When fatty acid is esterified with glycerol, monoglycerides are formed

Choose the correct answer from the option given below:

- (1) (a), (d) and (e) only    (2) (c), (d) and (e) only  
(3) (a), (b) and (d) only    (4) (a), (b) and (c) only

**Answer (2)**138. What is the role of large bundle sheath cells found around the vascular bundles in  $C_4$  plants?

- (1) To increase the number of chloroplast for the operation of Calvin cycle  
(2) To enable the plant to tolerate high temperature  
(3) To protect the vascular tissue from high light intensity  
(4) To provide the site for photorespiratory pathway

**Answer (1)**

139. The entire fleet of buses in Delhi were converted to CNG from diesel. In reference to this, which one of the following statements is false?

- (1) The same diesel engine is used in CNG buses making the cost of conversion low  
(2) It is cheaper than diesel  
(3) It cannot be adulterated like diesel  
(4) CNG burns more efficiently than diesel

**Answer (1)**

140. Transposons can be used during which one of the following ?  
 (1) Gene Silencing (2) Autoradiography  
 (3) Gene sequencing (4) Polymerase Chain Reaction

**Answer (1)**

141. Match List-I with List-II.

	List-I		List-II
(a)	Metacentric chromosome	(i)	Centromere situated close to the end forming one extremely short and one very long arms
(b)	Acrocentric chromosome	(ii)	Centromere at the terminal end
(c)	Submetacentric	(iii)	Centromere in the middle forming two equal arms of chromosomes
(d)	Telocentric chromosome	(iv)	Centromere slightly away from the middle forming one shorter arm and one longer arm

Choose the **correct answer** from the options given below :

- (1) (a)-(i), (b)-(iii), (c)-(ii), (d)-(iv) (2) (a)-(ii), (b)-(iii), (c)-(iv), (d)-(i)  
 (3) (a)-(i), (b)-(ii), (c)-(iii), (d)-(iv) (4) (a)-(iii), (b)-(i), (c)-(iv), (d)-(ii)

**Answer (4)**

142. Match the plant with the kind of life cycle it exhibits:

	List-I		List-II
(a)	<i>Spirogyra</i>	(i)	Dominant diploid sporophyte vascular plant, with highly reduced male or female gametophyte
(b)	Fern	(ii)	Dominant haploid free-living gametophyte
(c)	<i>Funaria</i>	(iii)	Dominant diploid sporophyte alternating with reduced gametophyte called prothallus
(d)	<i>Cycas</i>	(iv)	Dominant haploid leafy gametophyte alternating with partially dependent multicellular sporophyte

Choose the **correct answer** from the options given below :

- (1) (a)-(ii), (b)-(iii), (c)-(iv), (d)-(i) (2) (a)-(iii), (b)-(iv), (c)-(i), (d)-(ii)  
 (3) (a)-(ii), (b)-(iv), (c)-(i), (d)-(iii) (4) (a)-(iv), (b)-(i), (c)-(ii), (d)-(iii)

**Answer (1)**

143. Which of the following occurs due to the presence of autosome linked dominant trait?

- (1) Myotonic dystrophy (2) Haemophilia  
 (3) Thalessemia (4) Sickle cell anaemia

**Answer (1)**

144. The anatomy of springwood shows some peculiar features. Identify the **correct** set of statements about springwood.

- (a) It is also called as the earlywood  
 (b) In spring season cambium produces xylem elements with narrow vessels  
 (c) It is lighter in colour  
 (d) The springwood along with autumnwood shows alternate concentric rings forming annual rings  
 (e) It has lower density

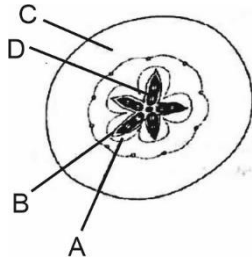
Choose the correct answer from the options given below :

- (1) (a), (c), (d) and (e) Only (2) (a), (b) and (d) Only  
 (3) (c), (d) and (e) Only (4) (a), (b), (d) and (e) Only

**Answer (1)**



145. Which part of the fruit, labelled in the given figure makes it a false fruit?



- (1) B → Endocarp (2) C → Thalamus  
(3) D → Seed (4) A → Mesocarp

**Answer (2)**

146. In the following palindromic base sequences of DNA, which one can be cut easily by particular restriction enzyme?

- (1) 5'GAATTC3'; 3'CTTAAG5' (2) 5'CTCAGT3'; 3'GAGTCA5'  
(3) 5'GTATTC3'; 3'CATAAG5' (4) 5'GATACT3'; 3'CTATGA5'

**Answer (1)**

147. While explaining interspecific interaction of population, (+) sign is assigned for beneficial interaction, (–) sign is assigned for detrimental interaction and (0) for neutral interaction. Which of the following interactions can be assigned (+) for one species and (–) for another species involved in the interaction ?

- (1) Amensalism (2) Commensalism  
(3) Competition (4) Predation

**Answer (4)**

148. Which one of the following will accelerate phosphorus cycle?

- (1) Volcanic activity  
(2) Weathering of rocks  
(3) Rain fall and storms  
(4) Burning of fossil fuels

**Answer (2)**

149. Given below are two statements : one is labelled as **Assertion (A)** and the other is labelled as **Reason (R)**.  
**Assertion (A)** : Mendel's law of Independent assortment does not hold good for the genes that are located closely on the same chromosome.

**Reason (R)** : Closely located genes assort independently.

In the light of the above statements, choose the **correct** answer from the options given below:

- (1) Both (A) and (R) are correct but (R) is not the correct explanation of (A)  
(2) (A) is correct but (R) is not correct  
(3) (A) is not correct but (R) is correct  
(4) Both (A) and (R) are correct and (R) is the correct explanation of (A)

**Answer (2)**

150. If a geneticist uses the blind approach for sequencing the whole genome of an organism, followed by assignment of function to different segments, the methodology adopted by him is called as :

- (1) Gene mapping  
(2) Expressed sequence tags  
(3) Bioinformatics  
(4) Sequence annotation

**Answer (4)**



**ZOOLOGY****SECTION-A**

151. Given below are two statements:

**Statement I:**

Autoimmune disorder is a condition where body defense mechanism recognizes its own cells as foreign bodies.

**Statement II:**

Rheumatoid arthritis is a condition where body does not attack self cells.

In the light of the above statements, choose the **most appropriate** answer from the options given below:

- (1) Both **Statement I** and **Statement II** are incorrect
- (2) **Statement I** is correct but **Statement II** is incorrect
- (3) **Statement I** is incorrect but **Statement II** is correct
- (4) Both **Statement I** and **Statement II** are correct

**Answer (2)**

152. Given below are two statements :

**Statement I :**

The coagulum is formed of network of threads called thrombins.

**Statement II :**

Spleen is the graveyard of erythrocytes.

In the light of the above statements, choose the **most appropriate** answer from the options given below :

- (1) Both **Statement I** and **Statement II** are incorrect
- (2) **Statement I** is correct but **Statement II** is incorrect
- (3) **Statement I** is incorrect but **Statement II** is correct
- (4) Both **Statement I** and **Statement II** are correct

**Answer (3)**

153. Identify the asexual reproductive structure associated with *Penicillium* :

- (1) Conidia
- (2) Gemmules
- (3) Buds
- (4) Zoospores

**Answer (1)**

154. Given below are two statements:

**Statement I :**

The release of sperms into the seminiferous tubules is called spermiation.

**Statement II :**

Spermiogenesis is the process of formation of sperms from spermatogonia.

In the light of the above statements, choose the **most appropriate** answer from the options given below :

- (1) Both **Statement I** and **Statement II** are incorrect
- (2) **Statement I** is correct but **Statement II** is incorrect
- (3) **Statement I** is incorrect but **Statement II** is correct
- (4) Both **Statement I** and **Statement II** are correct

**Answer (2)**

155. Under normal physiological conditions in human being every 100 ml of oxygenated blood can deliver \_\_\_\_\_ ml of O<sub>2</sub> to the tissues.

- (1) 5 ml
- (2) 4 ml
- (3) 10 ml
- (4) 2 ml

**Answer (1)**

156. *In-situ* conservation refers to:

- (1) Conserve only high-risk species
- (2) Conserve only endangered species
- (3) Conserve only extinct species
- (4) Protect and conserve the whole ecosystem

**Answer (4)**

157. Natural selection where more individuals acquire specific character value other than the mean character value, leads to

- (1) Directional change
- (2) Disruptive change
- (3) Random change
- (4) Stabilising change

**Answer (1)**

158. Breeding crops with higher levels of vitamins and minerals or higher proteins and healthier fats is called :

- (1) Bio-remediation
- (2) Bio-fortification
- (3) Bio-accumulation
- (4) Bio-magnification

**Answer (2)**

159. Which of the following is present between the adjacent bones of the vertebral column?

- (1) Cartilage
- (2) Areolar tissue
- (3) Smooth muscle
- (4) Intercalated discs

**Answer (1)**

160. Nitrogenous waste is excreted in the form of pellet or paste by :

- (1) *Salamandra*
- (2) *Hippocampus*
- (3) *Pavo*
- (4) *Ornithorhynchus*

**Answer (3)**

161. Which of the following statements with respect to Endoplasmic Reticulum is incorrect?
- (1) SER is devoid of ribosomes (2) In prokaryotes only RER are present  
 (3) SER are the sites for lipid synthesis (4) RER has ribosomes attached to ER

**Answer (2)**

162. Which of the following statements are true for spermatogenesis but do not hold true for Oogenesis?
- (a) It results in the formation of haploid gametes  
 (b) Differentiation of gamete occurs after the completion of meiosis  
 (c) Meiosis occurs continuously in a mitotically dividing stem cell population  
 (d) It is controlled by the Luteinising hormone (LH) and Follicle Stimulating Hormone (FSH) secreted by the anterior pituitary  
 (e) It is initiated at puberty

Choose the most appropriate answer from the options given below:

- (1) (b) and (c) only (2) (b), (d) and (e) only  
 (3) (b), (c) and (e) only (4) (c) and (e) only

**Answer (3)**

163. Given below are two statements : one is labelled as Assertion (A) and the other is labelled as Reason (R).

**Assertion (A)** : All vertebrates are chordates but all chordates are not vertebrates.

**Reason (R)** : Notochord is replaced by vertebral column in the adult vertebrates.

In the light of the above statements, choose the **most appropriate** answer from the option given below :

- (1) Both (A) and (R) are correct but (R) is not the correct explanation of (A)  
 (2) (A) is correct but (R) is not correct  
 (3) (A) is not correct but (R) is correct  
 (4) Both (A) and (R) are correct and (R) is the correct explanation of (A)

**Answer (4)**

164. In which of the following animals, digestive tract has additional chambers like crop and gizzard?

- (1) *Bufo*, *Balaenoptera*, *Bangarus* (2) *Catla*, *Columba*, *Crocodylus*  
 (3) *Pavo*, *Psittacula*, *Corvus* (4) *Corvus*, *Columba*, *Chameleon*

**Answer (3)**

165. Given below are two statements : one is labelled as **Assertion (A)** and the other is labelled as **Reason (R)**.

**Assertion (A)**:

Osteoporosis is characterised by decreased bone mass and increased chance of fractures.

**Reason (R)**:

Common cause of osteoporosis is increased levels of estrogen.

In the light of the above statements, choose the **most appropriate** answer from the options given below.

- (1) Both (A) and (R) are correct but (R) is not the correct explanation of (A)  
 (2) (A) is correct but (R) is not correct  
 (3) (A) is not correct but (R) is correct  
 (4) Both (A) and (R) are correct and (R) is the correct explanation of (A)

**Answer (2)**

166. In gene therapy of Adenosine Deaminase (ADA) deficiency, the patient requires periodic infusion of genetically engineered lymphocytes because :

- (1) Gene isolated from marrow cells producing ADA is introduced into cells at embryonic stages
- (2) Lymphocytes from patient's blood are grown in culture, outside the body.
- (3) Genetically engineered lymphocytes are not immortal cells.
- (4) Retroviral vector is introduced into these lymphocytes.

**Answer (3)**

167. Select the **incorrect** statement with reference to mitosis:

- (1) Spindle fibres attach to centromere of chromosomes
- (2) Chromosomes decondense at telophase
- (3) Splitting of centromere occurs at anaphase
- (4) All the chromosomes lie at the equator at metaphase

**Answer (1)**

168. In the taxonomic categories which hierarchical arrangement in ascending order is **correct** in case of animals?

- (1) Kingdom, Class, Phylum, Family, Order, Genus, Species
- (2) Kingdom, Order, Class, Phylum, Family, Genus, Species
- (3) Kingdom, Order, Phylum, Class, Family, Genus, Species
- (4) Kingdom, Phylum, Class, Order, Family, Genus, Species

**Answer (4\*)**

169. Given below are two statements:

**Statement I:**

Restriction endonucleases recognise specific sequence to cut DNA known as palindromic nucleotide sequence.

**Statement II:**

Restriction endonucleases cut the DNA strand a little away from the centre of the palindromic site.

In the light of the above statements, choose the **most appropriate** answer from the options given below:

- (1) Both **Statement I** and **Statement II** are incorrect
- (2) **Statement I** is correct but **Statement II** is incorrect
- (3) **Statement I** is incorrect but **Statement II** is correct
- (4) Both **Statement I** and **Statement II** are correct

**Answer (4)**

170. Given below are two statements :

**Statement I :** Mycoplasma can pass through less than 1 micron filter size.

**Statement II :** Mycoplasma are bacteria with cell wall.

In the light of the above statements, choose the most appropriate answer from the options given below

- (1) Both Statement I and Statement II are incorrect
- (2) Statement I is correct but Statement II is incorrect
- (3) Statement I is incorrect but Statement II is correct
- (4) Both Statement I and Statement II are correct

**Answer (2)**

171. Which of the following is **not** a connective tissue?

- |                    |               |
|--------------------|---------------|
| (1) Adipose tissue | (2) Cartilage |
| (3) Neuroglia      | (4) Blood     |

**Answer (3)**

172. Lippe's loop is a type of contraceptive used as:

- |                          |                       |
|--------------------------|-----------------------|
| (1) Vault barrier        | (2) Non-Medicated IUD |
| (3) Copper releasing IUD | (4) Cervical barrier  |

**Answer (2)**

173. At which stage of life the oogenesis process is initiated?

- |                                 |             |
|---------------------------------|-------------|
| (1) Embryonic development stage | (2) Birth   |
| (3) Adult                       | (4) Puberty |

**Answer (1)**

174. Identify the microorganism which is responsible for the production of an immunosuppressive molecule cyclosporin A :

- |                                     |                                   |
|-------------------------------------|-----------------------------------|
| (1) <i>Clostridium butylicum</i>    | (2) <i>Aspergillus niger</i>      |
| (3) <i>Streptococcus cerevisiae</i> | (4) <i>Trichoderma polysporum</i> |

**Answer (4)**

175. Given below are two statements :

**Statement I :**

Fatty acids and glycerols cannot be absorbed into the blood.

**Statement II :**

Specialized lymphatic capillaries called lacteals carry chylomicrons into lymphatic vessels and ultimately into the blood.

In the light of the above statements, choose the **most appropriate** answer from the options given below:

- (1) Both **Statement I** and **Statement II** are incorrect
- (2) **Statement I** is correct but **Statement II** is incorrect
- (3) **Statement I** is incorrect but **Statement II** is correct
- (4) Both **Statement I** and **Statement II** are correct

**Answer (4)**

176. In an *E. Coli* strain *i* gene gets mutated and its product can not bind the inducer molecule. If growth medium is provided with lactose, what will be the outcome?
- (1) *z, y, a* genes will be transcribed
  - (2) *z, y, a* genes will not be translated
  - (3) RNA polymerase will bind the promoter region
  - (4) Only *z* gene will get transcribed

**Answer (2)**

177. Tegmina in cockroach, arises from
- (1) Mesothorax
  - (2) Metathorax
  - (3) Prothorax and Mesothorax
  - (4) Prothorax

**Answer (1)**

178. Which of the following is not the function of conducting part of respiratory system?
- (1) Inhaled air is humidified
  - (2) Temperature of inhaled air is brought to body temperature
  - (3) Provides surface for diffusion of  $O_2$  and  $CO_2$
  - (4) It clears inhaled air from foreign particles

**Answer (3)**

179. Which of the following is a correct match for disease and its symptoms?
- (1) Tetany – High  $Ca^{2+}$  level causing rapid spasms.
  - (2) Myasthenia gravis – Genetic disorder resulting in weakening and paralysis of skeletal muscle
  - (3) Muscular dystrophy – An auto immune disorder causing progressive degeneration of skeletal muscle
  - (4) Arthritis – Inflamed joints

**Answer (4)**

180. Regarding Meiosis, which of the statements is **incorrect**?
- (1) DNA replication occurs in S phase of Meiosis-II
  - (2) Pairing of homologous chromosomes and recombination occurs in Meiosis-I
  - (3) Four haploid cells are formed at the end of Meiosis-II
  - (4) There are two stages in Meiosis, Meiosis-I and II

**Answer (1)**

181. Detritivores breakdown detritus into smaller particles. This process is called:
- (1) Fragmentation
  - (2) Humification
  - (3) Decomposition
  - (4) Catabolism

**Answer (1)**

182. If the length of a DNA molecule is 1.1 metres, what will be the approximate number of base pairs?
- (1)  $6.6 \times 10^9$  bp
  - (2)  $3.3 \times 10^6$  bp
  - (3)  $6.6 \times 10^6$  bp
  - (4)  $3.3 \times 10^9$  bp

**Answer (4)**

183. Which of the following functions is **not** performed by secretions from salivary glands?
- (1) Digestion of complex carbohydrates
  - (2) Lubrication of oral cavity
  - (3) Digestion of disaccharides
  - (4) Control bacterial population in mouth

**Answer (3)**

184. A dehydration reaction links two glucose molecules to product maltose. If the formula for glucose is  $C_6H_{12}O_6$  then what is the formula for maltose?
- (1)  $C_{12}H_{24}O_{12}$
  - (2)  $C_{12}H_{22}O_{11}$
  - (3)  $C_{12}H_{24}O_{11}$
  - (4)  $C_{12}H_{20}O_{10}$

**Answer (2)**

185. If '8' *Drosophila* in a laboratory population of '80' died during a week, the death rate in the population is \_\_\_\_\_ individuals per *Drosophila* per week.
- (1) 10
  - (2) 1.0
  - (3) zero
  - (4) 0.1

**Answer (4)**

## SECTION-B

186. Given below are two statements:

**Statements I :**

In a scrubber the exhaust from the thermal plant is passed through the electric wires to charge the dust particles.

**Statement II :**

Particulate matter (PM 2.5) cannot be removed by scrubber but can be removed by an electrostatic precipitator.

In the light of the above statements, choose the **most appropriate** answer from the options given below :

- (1) Both **Statement I** and **Statement II** are incorrect
- (2) **Statement I** is correct but **Statement II** is incorrect
- (3) **Statement I** is incorrect but **Statement II** is correct
- (4) Both **Statement I** and **Statement II** are correct

**Answer (3)**

187. Which of the following is a **correct** statement?

- (1) Bacteria are exclusively heterotrophic organisms.
- (2) Slime moulds are saprophytic organisms classified under Kingdom Monera.
- (3) Mycoplasma have DNA, ribosome and cell wall.
- (4) Cyanobacteria are a group of autotrophic organisms classified under kingdom Monera.

**Answer (4)**

188. Ten *E.coli* cells with  $^{15}\text{N}$  - dsDNA are incubated in medium containing  $^{14}\text{N}$  nucleotide. After 60 minutes, how many *E.coli* cells will have DNA totally free from  $^{15}\text{N}$ ?

- (1) 40 cells
- (2) 60 cells
- (3) 80 cells
- (4) 20 cells

**Answer (2)**

189. Select the **incorrect** statement with respect to acquired immunity.

- (1) Anamnestic response is elicited on subsequent encounters with the same pathogen.
- (2) Anamnestic response is due to memory of first encounter.
- (3) Acquired immunity is non-specific type of defense present at the time of birth.
- (4) Primary response is produced when our body encounters a pathogen for the first time.

**Answer (3)**

190. Statements related to human Insulin are given below.

Which statement(s) is/are **correct** about genetically engineered Insulin?

- (a) Pro-hormone insulin contain extra stretch of C-peptide
- (b) A-peptide and B-peptide chains of insulin were produced separately in *E.coli*, extracted and combined by creating disulphide bond between them.
- (c) Insulin used for treating Diabetes was extracted from Cattles and Pigs.
- (d) Pro-hormone Insulin needs to be processed for converting into a mature and functional hormone.
- (e) Some patients develop allergic reactions to the foreign insulin.

Choose **the most appropriate** answer from the options given below:

- (1) (b) only
- (2) (c) and (d) only
- (3) (c), (d) and (e) only
- (4) (a), (b) and (d) only

**Answer (1)**



191. Which of the following are **not** the effects of Parathyroid hormone?

- (a) Stimulates the process of bone resorption
- (b) Decreases  $\text{Ca}^{2+}$  level in blood
- (c) Reabsorption of  $\text{Ca}^{2+}$  by renal tubules
- (d) Decreases the absorption of  $\text{Ca}^{2+}$  from digested food
- (e) Increases metabolism of carbohydrates

Choose the **most appropriate** answer from the options given below:

- (1) (b), (d) and (e) only
- (2) (a) and (e) only
- (3) (b) and (c) only
- (4) (a) and (c) only

**Answer (1)**

192. Select the **incorrect** statement regarding synapses :

- (1) Electrical current can flow directly from one neuron into the other across the electrical synapse.
- (2) Chemical synapses use neurotransmitters
- (3) Impulse transmission across a chemical synapse is always faster than that across an electrical synapse.
- (4) The membranes of presynaptic and postsynaptic neurons are in close proximity in an electrical synapse.

**Answer (3)**

193. Match List-I with List-II

	List-I		List-II
(a)	Bronchioles	(i)	Dense Regular Connective Tissue
(b)	Goblet Cell	(ii)	Loose Connective Tissue
(c)	Tendons	(iii)	Glandular Tissue
(d)	Adipose Tissue	(iv)	Ciliated Epithelium

Choose the **correct answer** from the options given below:

- (1) (a) - (i), (b) - (ii), (c) - (iii), (d) - (iv)
- (2) (a) - (ii), (b) - (i), (c) - (iv), (d) - (iii)
- (3) (a) - (iii), (b) - (iv), (c) - (ii), (d) - (i)
- (4) (a) - (iv), (b) - (iii), (c) - (i), (d) - (ii)

**Answer (4)**

194. The recombination frequency between the genes a & c is 5%, b & c is 15%, b & d is 9%, a & b is 20%, c & d is 24% and a & d is 29%. What will be the sequence of these genes on a linear chromosome?

- (1) d, b, a, c
- (2) a, b, c, d
- (3) a, c, b, d
- (4) a, d, b, c

**Answer (3)**

195. If a colour blind female marries a man whose mother was also colour blind, what are the chances of her progeny having colour blindness?

- (1) 50% (2) 75%  
 (3) 100% (4) 25%

**Answer (3)**

196. Match List-I with List-II

	List-I (Biological Molecules)		List-II (Biological functions)
(a)	Glycogen	(i)	Hormone
(b)	Globulin	(ii)	Biocatalyst
(c)	Steroids	(iii)	Antibody
(d)	Thrombin	(iv)	Storage product

Choose the **correct answer** from the options given below:

- (1) (a) - (iv), (b) - (ii), (c) - (i), (d) - (iii) (2) (a) - (ii), (b) - (iv), (c) - (iii), (d) - (i)  
 (3) (a) - (iv), (b) - (iii), (c) - (i), (d) - (ii)(4) (a) - (iii), (b) - (ii), (c) - (iv), (d) - (i)

**Answer (3)**

197. Which of the following is **not** a desirable feature of a cloning vector?

- (1) Presence of a marker gene  
 (2) Presence of single restriction enzyme site  
 (3) Presence of two or more recognition sites  
 (4) Presence of origin of replication

**Answer (3)**

198. Which of the following statements **is not** true?

- (1) Sweet potato and potato is an example of analogy  
 (2) Homology indicates common ancestry  
 (3) Flippers of penguins and dolphins are a pair of homologous organs  
 (4) Analogous structures are a result of convergent evolution

**Answer (3)**

199. Which one of the following statements is **correct**?

- (1) The tricuspid and the bicuspid valves open due to the pressure exerted by the simultaneous contraction of the atria  
 (2) Blood moves freely from atrium to the ventricle during joint diastole.  
 (3) Increased ventricular pressure causes closing of the semilunar valves.  
 (4) The atrio-ventricular node (AVN) generates an action potential to stimulate atrial contraction

**Answer (2)**

200. Match **List-I** with **List-II** with respect to methods of Contraception and their respective actions.

	List-I		List-II
(a)	Diaphragms	(i)	Inhibit ovulation and Implantation
(b)	Contraceptive Pills	(ii)	Increase phagocytosis of sperm within Uterus
(c)	Intra Uterine Devices	(iii)	Absence of Menstrual cycle and ovulation following parturition
(d)	Lactational Amenorrhea	(iv)	They cover the cervix blocking the entry of sperms

Choose the **correct answer** from the options given below:

- (1) (a) - (iv), (b) - (i), (c) - (ii), (d) - (iii)
- (2) (a) - (ii), (b) - (iv), (c) - (i), (d) - (iii)
- (3) (a) - (iii), (b) - (ii), (c) - (i), (d) - (iv)
- (4) (a) - (iv), (b) - (i), (c) - (iii), (d) - (ii)

**Answer (1)**

