

## MISSION M.B.B.S

Date: 03/08/2022

Subject: ZOOLOGY

Topic : ANIMAL KINGDOM L6

Class: Standard XI

---

Instructions:

A

1. The notochord is persistent throughout life in
  - A. urochordates and cephalochordates
  - B. cephalochordates
  - C. urochordates and vertebrates
  - D. all chordates
2. Identify the correct statement.
  - A. Cranium is present in all chordates
  - B. Metamerism is found in chordates
  - C. Two pairs of limbs are present in all tetrapods
  - D. Nerve cord is present on the ventral side in chordates
3. The common feature of all vertebrates is the presence of:
  - A. limbs for locomotion
  - B. a closed circulatory system
  - C. a persistent notochord
  - D. direct development into the adult stage after fertilization

## MISSION M.B.B.S

4. Which among the following is a common feature shared between *Betta* and *Carcharodon*?
- A. Chambers in heart
  - B. Mode of embryo development
  - C. Presence of air bladder
  - D. Cartilaginous endoskeleton
5. The vertebral column is cartilaginous in:
- A. Osteichthyes
  - B. Cyclostomes
  - C. Urochordates
  - D. Cephalochordates
6. Match the following.

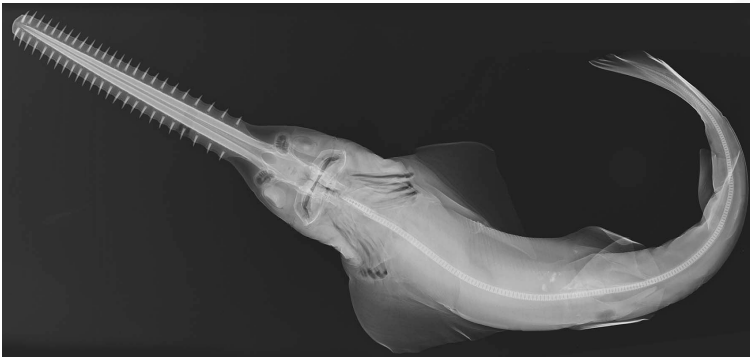
Column I	Column II
A. <i>Exocoetus</i>	I. Rohu
B. <i>Pterophyllum</i>	II. Sea horse
C. <i>Labeo</i>	III. Angelfish
D. <i>Hippocampus</i>	IV. Flying fish

- A. A-I, B-II, C-III, D-IV
- B. A-IV, B-III, C-II, D-I
- C. A-IV, B-III, C-I, D-II
- D. A-III, B-IV, C-I, D-II

7. Operculum is absent in

- A. *Labeo*
- B. *Pristis*
- C. *Exocoetus*
- D. *Betta*

8. Identify the animal in the image.



- A. *Exocoetus*
- B. *Pristis*
- C. *Scoliodon*
- D. *Trygon*

9. Vertebrates without jaws are included in the class:

- A. Agnatha
- B. Cyclostomata
- C. Hemichordata
- D. Chondrichthyes

## MISSION M.B.B.S

10. Identify the correct statement:

- A.** All chordates are vertebrates
- B.** All vertebrates are chordates
- C.** All triploblastic animals are coelomates
- D.** All chordates have cranium (brain box)