

ICSE Board
Class VII
Biology
Sample Paper – 2

Time: 2 hrs

Total Marks: 75

General Instructions:

1. All questions are **compulsory**.
2. Questions 1 to 15 carry one mark each.
3. Questions in 2 A and B carry one mark each.
4. Questions in 3 A carry one mark each and B carries 5 marks.
5. Question 4 A and B carries 5 marks each.
6. Questions in 5 A and B carry one mark each.
7. Questions in 6A and B carry one mark each.
8. Question 7 A and B carry five marks each.

Question 1

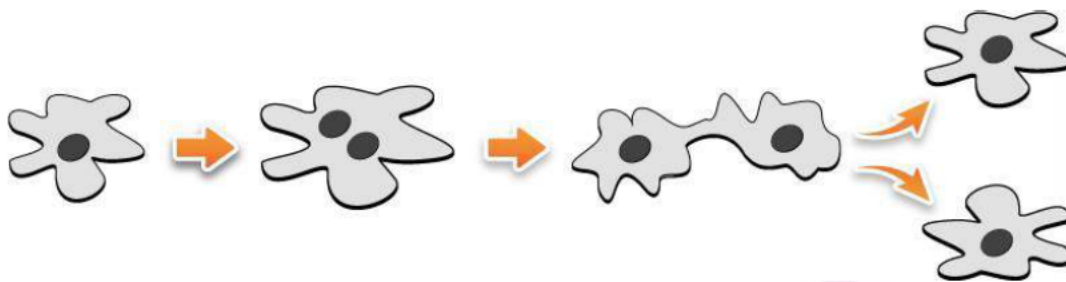
1. Which of the following body areas are used for skin prick test?
 - (a) Hand
 - (b) Forearm and back
 - (c) Palm
 - (d) Shoulder
2. Which of the following are not striated muscles?
 - (a) Muscles of the arm
 - (b) Muscles of the face
 - (c) Muscles of the legs
 - (d) Muscles of the urinary bladder
3. _____ are dense connective tissues containing only fibroblasts and collagen fibres.
 - (a) Bones
 - (b) Ligaments
 - (c) Tendons
 - (d) Cartilage
4. The fine branches given out from the cell body of a nerve cell are
 - (a) dendrites
 - (b) cyton
 - (c) axon
 - (d) neuron

5. Unicellular organisms with a proper nucleus belong to
 - (a) Protista
 - (b) Monera
 - (c) Fungi
 - (d) Algae
6. Which of the following is not an arthropod?
 - (a) Prawn
 - (b) Butterfly
 - (c) Earthworm
 - (d) Spider
7. Stomata are present on the surface of
 - (a) Leaves
 - (b) Roots
 - (c) Stem
 - (d) Flower
8. Which of the following constitutes an organ?
 - (a) Tissues
 - (b) Organism
 - (c) Organ System
 - (d) None of the above
9. Which of following tissues stores fats?
 - (a) Areolar tissue
 - (b) Adipose tissue
 - (c) Epithelial tissue
 - (d) Ligaments
10. Which of the following chemicals is added during respiration experiments to prevent bacterial growth on dead seeds?
 - (a) Citric acid
 - (b) Carbolic acid
 - (c) Pyrogalllic acid
 - (d) Potassium permanganate
11. Which of the following stores urine?
 - (a) Ureter
 - (b) Urethra
 - (c) Urinary bladder
 - (d) Kidney

12. Excretion in Amoeba takes place with the help of_____.

- (a) Food vacuole
- (b) Contractile vacuole
- (c) Pseudopodia
- (d) Cilia

13. Identify this method of reproduction.



- (a) Multiple fission
- (b) Fragmentation
- (c) Binary fission
- (d) Segmentation

14. Nephrons release urine into the_____, from where the ureters carry it to the urinary bladder.

- (a) Glomerulus
- (b) Kidneys
- (c) Renal pelvis
- (d) None of these

15. Which of the following occurs due to allergic reaction 'hives'?

- (a) Lining of the nasal cavity becomes inflamed
- (b) Walls of the bronchioles contract
- (c) Blood pressure decreased
- (d) Swollen, red patches appear on the skin

Question 2

A. Name the following.

[5]

1. Tissue involved in the transport of food in plants.
2. The middle portion of an insect's body.
3. Organisms in which the body consists of thread-like structures.
4. Tiny openings found on the lower side of the leaf for the exchange of gases.
5. Amphibians of plant kingdom.

Fill in the blanks.

[5]

1. Starfish moves with the help of_____.
2. Each nephron consists of a cup-shaped structure called_____.
3. _____are tiny structures capable of producing new plants.
4. Annelids have special organs for excretion called_____.
5. Stomata are surrounded by a pair of bean-shaped cells called_____cells.

Question 3

A. Match the following.

[5]

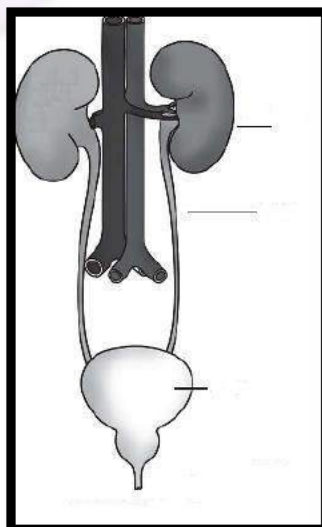
Column A	Column B
1. Sponge	A. Reptilia
2. Snail	B. Amphibia
3. Butterfly	C. Porifera
4. Toad	D. Mollusc
5. Lizard	E. Arthropoda

B. Answer the following.

1. Observe the picture given below and identify the cell structure. In which type of cell is this structure present? What is its role? [2]



2. Observe the picture given below and label the parts. [3]



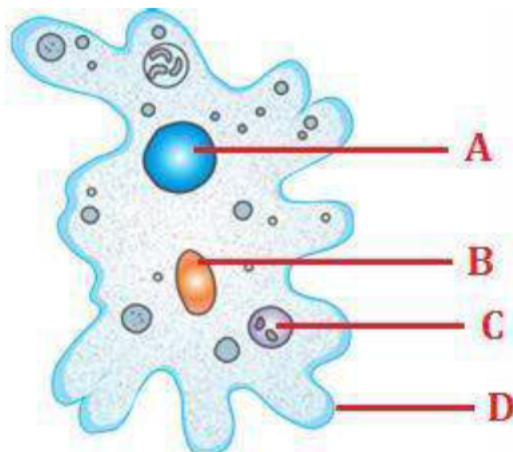
Question 4

A.

(a) What are allergens? Name any two allergens. [2]

(b) Which test is mostly preferred to test an allergy, skin prick test or blood test? Why? [3]

B. Identify the figure and label its parts. [5]



Question 5

A. Complete the table given below. [5]

	Aerobic respiration	Anerobic respiration
Oxygen requirement		
End products		
Energy released		

B. Find the odd one out. [5]

1. Tannin, Urea, Uric acid, Bile
2. Cerebrum, Medulla, Spinal nerves, Cerebellum
3. Bat, Blue whale, Flying squirrel, Water strider
4. Typhoid, Hay fever, Hives, Asthma
5. Xylem, Parenchyma, Meristem, Ligament

Question 6

- A. State the differences between respiration and photosynthesis. [5]
- B. Define the following terms. [5]
1. Egestion
 2. Tissue
 3. Symbiosis
 4. Monocotyledons
 5. Breathing

Question 7

- A. Write two characteristics and one example for each of the following: [5]
1. Arthropoda
 2. Annelida
 3. Mollusca
- B. Answer the following.
1. State the commercial importance of yeast. [2]
 2. Write three points of differences between xylem and phloem. [3]