

Exercise Questions

Page Number: 51

1. Correct the following statements and rewrite them in your notebook.

- (a) Stem absorbs water and minerals from the soil.
- (b) Leaves hold the plant upright.
- (c) Roots conduct water to the leaves.
- (d) The number of petals and stamens in a flower is always equal.
- (e) If the sepals of a flower are joined together, its petals are also joined together.
- (f) If the petals of a flower are joined together, then the pistil is joined to the petal.

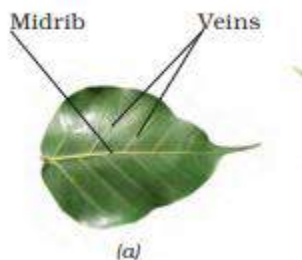
Solution:

- a) Roots absorb water and minerals from the soil.
- b) Stem holds the plant upright.
- c) Stems conduct water to the leaves.
- d) The number of petals and stamens in a flower may not always be equal.
- e) If the sepals of a flower are joined together, its petals are separate.
- f) If the petals of a flower are joined together, then the pistil may or may not be joined to the petal.

2. Draw (a) a leaf, (b) a taproot and (c) a flower you have studied for Table 7.3

Solution:

a)

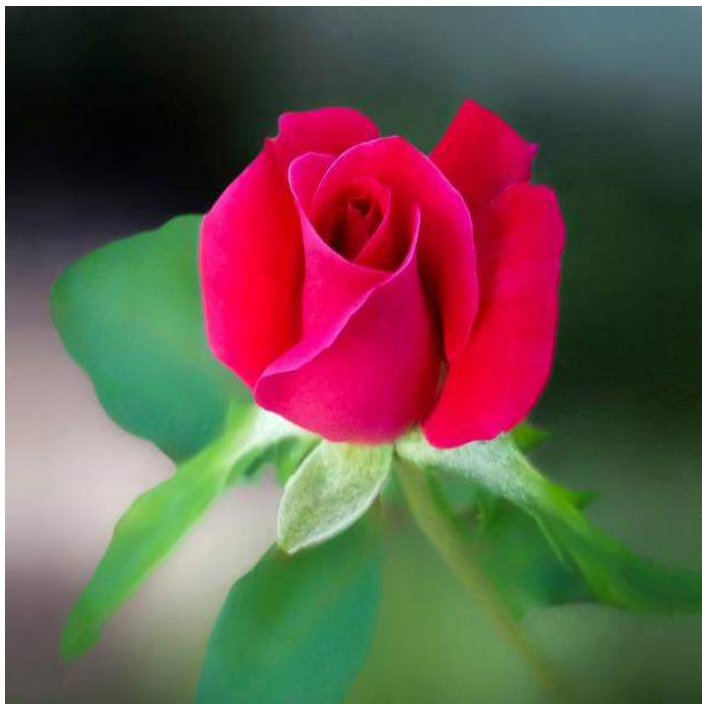


b)



(a)

c)



3. Can you find a plant in your house or in your neighbourhood which has a long but weak stem? Write its name. In which category will you place it?

Solution:

Yes, lauki (gourd) plant needs support. It is a climber.

4. What is the function of a stem?

Solution:

Following are the functions of a stem

- Stems hold the plant upright.
- Stems conduct water to the leaves.

- Stems conduct food from leaves to other parts of the plant.

5. Which of the following leaves have reticulate venation?

Wheat, tulsi, maize, grass, coriander (dhania), China rose

Solution:

Tulsi, China rose, and coriander have reticulate venation.

6. If a plant has fibrous roots, what type of venation do its leaves have?

Solution:

If a plant has a fibrous root, its leaves have **parallel venation**.

7. If a plant has leaves with reticulate venation, what kind of roots will it have?

Solution:

If a plant has leaves with reticulate venation, it will have **a tap root**.

8. Is it possible for you to find out whether a plant has taproot or fibrous roots by looking at the impression of its leaf on a sheet of paper?

Solution:

Yes, it is possible to find whether a plant has taproot or fibrous roots by looking at the impression of its leaf on a sheet of paper.

9. What are the parts of a flower?

Solution:

- a) Sepals
- b) Petals
- c) Stamens
- d) Pistil

10. From the following plants, which of them have flowers?

Grass, maize, wheat, chilli, tomato, tulsi, peepal, shisham, banyan, mango, jamun, guava, pomegranate, papaya, banana, lemon, sugarcane, potato, groundnut

Solution:

The plants which have flowers are grass, maize, wheat, chilli, tomato, tulsi, peepal, shisham, banyan (flowers lie inside its fruits), mango, jamun, guava, Pomegranate, papaya, banana, lemon, sugarcane, potato, groundnut.

11. Name the part of a plant which produces food. Name the process.

Solution:

Leaves produce food through a process called Photosynthesis.

12. In which part of a flower will you find the ovary?

Solution:

The ovary is found in the lowermost and most swollen part of the pistil.

13. Name two plants in which one has joined sepals, and the other has separate sepals.

Solution:

Plants with joined sepals – Datura and cotton

Plants with separate sepals – Rose and Lotus

