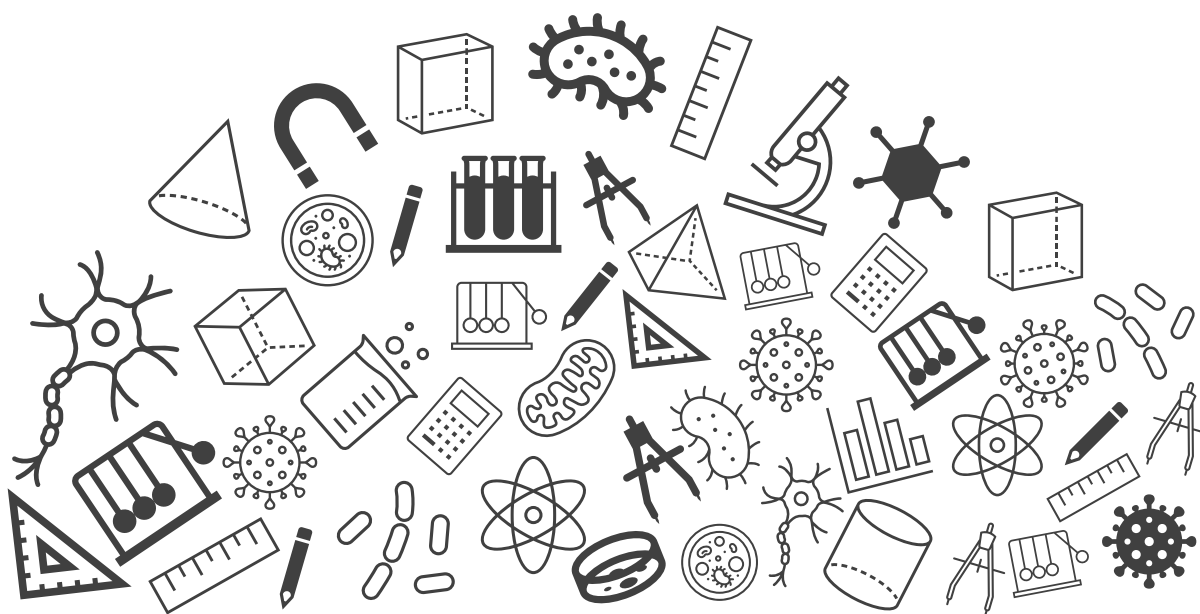




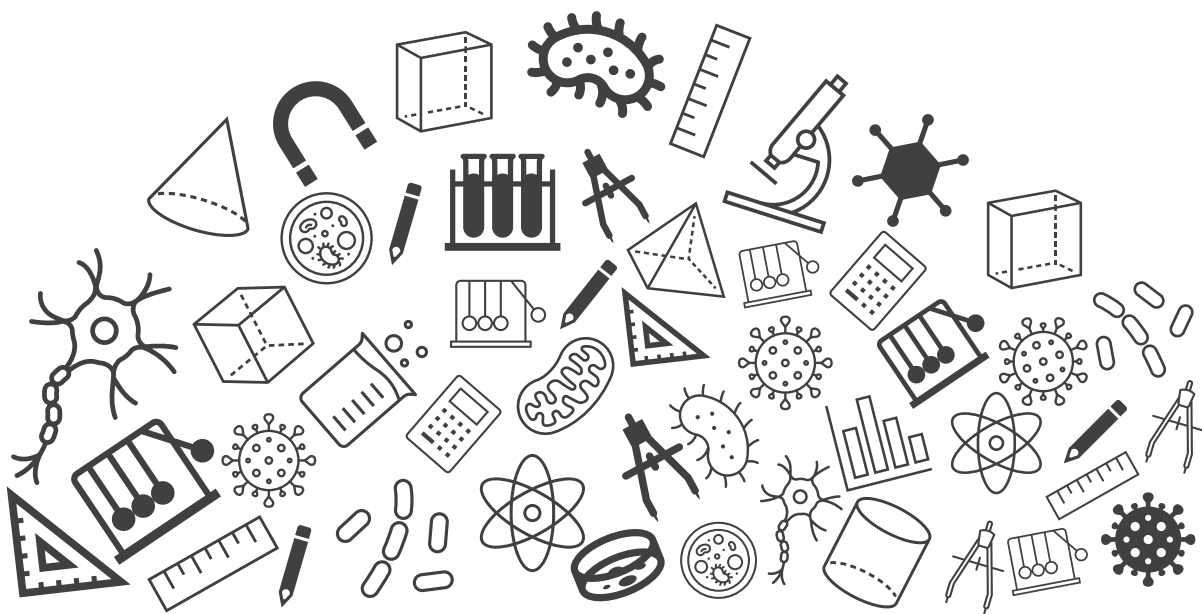
Grade 08 : Science

Exam Important Questions





Conservation of Plants and Animals



Conservation of Plants and Animals

Topic : Exam Important Questions

1. Discuss the effects of deforestation on the following: [3 marks]

(a) Villages (Rural areas)

(b) Cities (Urban areas)

Solution:

(a) Villages

- Trees help in preventing soil erosion by binding the soil tightly with the roots. But due to deforestation, the soil particles are left loose and exposed to climatic conditions like rainfall, wind, etc. This makes the top fertile layer of the soil prone to soil erosion. (1 mark)
- Eventually, it causes floods and causes damage to the agricultural activities in rural areas. (1 mark)

(b) Cities

- The major effect of deforestation on cities or urban areas includes an increase in the amount of greenhouse gases like carbon dioxide in the atmosphere, thereby causing global warming. (1 mark)

2. What is flora? [1 mark]

Solution:

- A forest has various species of plants. The plants found in a particular area are known as the flora of that area. (1 mark)

3. How does deforestation lead to frequent floods and droughts? [2 marks]

Solution:

- Deforestation results in decreased water holding capacity of the soil. It reduces the infiltration of water into the ground which causes floods. (0.5 marks)
- In addition to this, deforestation leads to higher level of carbon dioxide in the atmosphere which causes global warming. (0.5 marks)
- Scarcity of trees disturbs the water cycle which in turn causes reduced precipitation. (0.5 marks)
- Lower amount of rainfall leads to droughts. (0.5 marks)

Conservation of Plants and Animals

4. What is Red Data Book? [1 mark]

Solution:

- Red Data Book is the source book which keeps a record of all the endangered plants and animals found on Earth. (0.5 marks)
- It is maintained by International Union of Conservation for Nature. (0.5 marks)

5. Differentiate between extinct and endangered species. [1 mark]

Solution:

Extinct species	Endangered species
Extinct species are those species that existed on the surface of the earth at some point of time but are no longer present.	Endangered species are those which are on the verge of extinction.
Example: Dodo	Example: Tiger.

6. Differentiate between wildlife sanctuary and biosphere reserve. [2 marks]

Solution:

- The difference between wildlife sanctuary and biosphere reserve are as following: (2 marks)

<i>Wildlife sanctuary</i>	<i>Biosphere reserve</i>
<i>It is an area within which wild animals are protected in their natural habitat from the possible dangers such as hunting.</i>	<i>It is a large protected area constructed for the conservation and protection of biodiversity and tribal populations.</i>
<i>For example : Bori wildlife sanctuary.</i>	<i>For example : Pachmarhi biosphere reserve.</i>

7. Why are zoos called artificial habitat? [2 marks]

Solution:

- Zoo is an artificial habitat created for animals and birds to be watched by visitors as a part of tourism. (1 mark)
- In zoos animals and birds are kept in cages and they are not in their natural habitat, so zoos are considered as artificial habitat. (1 mark)

Conservation of Plants and Animals

8. Which activities are restricted in national park? [1 mark]

Solution:

- A lot of activities like collection of firewood and medicinal plants, poaching and hunting activities etc., are strictly restricted in order to conserve plants and animals. (1 mark)

9. What are protected areas? Name any two wildlife protected areas with examples. [3 marks]

Solution:

- Areas dedicated and managed for the conservation of wildlife and plant species are called protected areas. (1 mark)
1. Wildlife Sanctuaries – Areas where mainly animals are protected from any disturbance to them in their natural habitat.
Example: Bori wildlife sanctuary, Silent valley wildlife sanctuary, etc. (1 mark)
 2. National Parks – Areas reserved for conservation of both plants and animals.
Example: Satpura National Park, Corbett National park, etc. (1 mark)

10. Differentiate between the following: Zoo and the wildlife sanctuary. [3 marks]

Solution:

- Difference between zoo and the wildlife sanctuary. (3 marks)

<i>Zoo</i>	<i>Wildlife sanctuary</i>
Zoos are smaller places having some animals protected for the public view.	Wildlife Sanctuary are larger places having wild animals in their natural habitat.
It is an artificial habitat.	It conserves the natural habitat of animals.
It provides protection to wild animals.	It provides protection and suitable living condition to wild animals.