

Friday Funday

General Knowledge | Reading & Writing Activities | Math Exercises

Hello young learners!

**I am Mila from Disney.BYJU'S Early Learn App,
where I share all my adventures in Ordinary County!**

**Do you know that I have a secret? Not even
my brother, Ezra, knows about it!**

**I am also a superhero who goes
by the name Kid Inc. I wear a badge
that glows and alerts me whenever
there is any trouble!**

**But when I am back to being Mila,
I read books, explore the world,
and do my homework, just like you!
Would you like to help me finish it?**

**You can also join Miss Mala,
Miss Meridiem, and Officer Michael
for other fun learning activities!**

Let's go!



ACTIVITY 1

Mila explains Magic

3

ACTIVITY 2

Math with Miss Mala!

7

ACTIVITY 3

Mental Gymnastics with Miss Meridiem

9

ACTIVITY 4

The Magic Potion with Officer Michael

11

ACTIVITY 5

Fun with Ezra!

14

BONUS

Stickers included

18

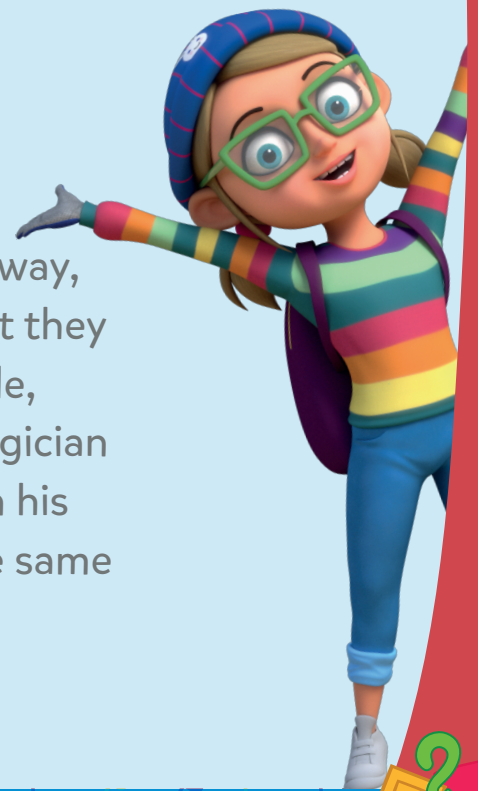
ACTIVITY 1

Mila explains Magic



Magic is one of the performing arts and an old form of entertainment. Magic shows often take place outdoors at carnivals, fairs, and markets. Magic shows are meant to entertain people with tricks that seem impossible or unreal. A classic example of a magic trick is when a magician takes a rabbit out of a hat.

During a magic show, magicians use many secret tricks. One of those tricks is called misdirection. The magician uses this key secret by getting people to look in another direction and distract them from the actual trick. In this way, the magician can change people's ideas of what they see and what is actually happening. For example, a person might be too focused on what the magician has to say and fail to notice him hiding a coin in his coat sleeve. And ta-da, the magician brings the same coin out from the person's ear.



Magicians perform tricks they have learnt and practised over the years, like any other profession. Most magicians focus on getting good at a few tricks, for example, making something disappear or a person float in the air.

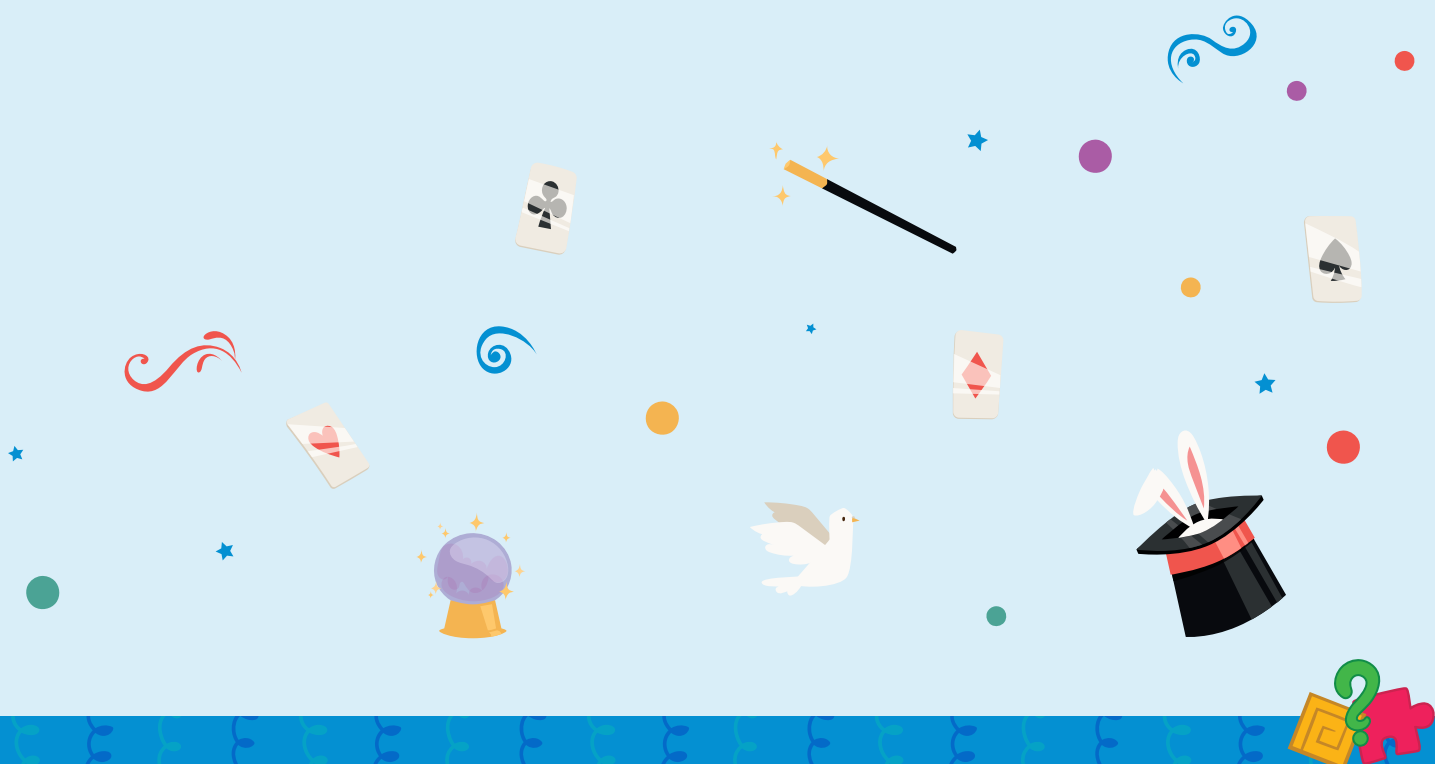


Magic shows have always been popular. Magic was able to reach a large audience thanks to its simple transition from magic theatres to television shows. Most television magicians perform in front of a live audience. It makes people watching television at home believe that the tricks don't use any special effects.

REFERENCE:

<https://www.oxfordlearnersdictionaries.com/> | <https://americanmuseumofmagic.com/history-of-magic/>
<https://kids.britannica.com/kids/article/magic/353408> | <https://kids.britannica.com/students/article/magic/275609>
[https://www.newworldencyclopedia.org/entry/Magic_\(Illusion\)](https://www.newworldencyclopedia.org/entry/Magic_(Illusion)) | <https://americanmuseumofmagic.com/types-of-magic/>

Retrieved on 18 January 2023



Instruction: Read the passage and answer the following questions

1. Magicians reveal their secrets at the end of the show.

- a. True b. False c. Can't say

2. _____ is one of the key secrets behind magic tricks.

- a. Misdirection b. Miscommunication c. Music

3. Which of the following statements is true?

- a. Magicians use special tools to do their tricks.
b. Every magic trick needs a lot of practice.
c. Both A and B

4. Most magicians choose to focus on perfecting a couple of magic tricks.

- a. True b. False c. Can't say

5. Magicians are trained professionals who work very hard at their craft.

- a. True b. False c. Can't say



ACTIVITY 2

Math with Miss Mala!

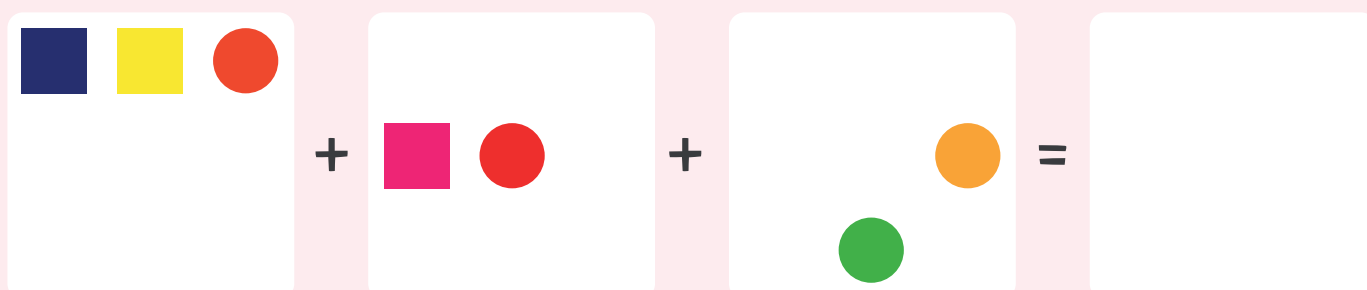
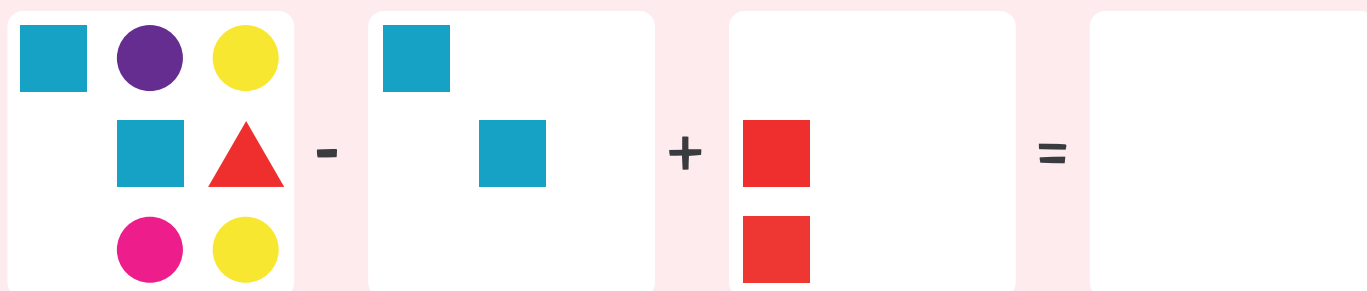
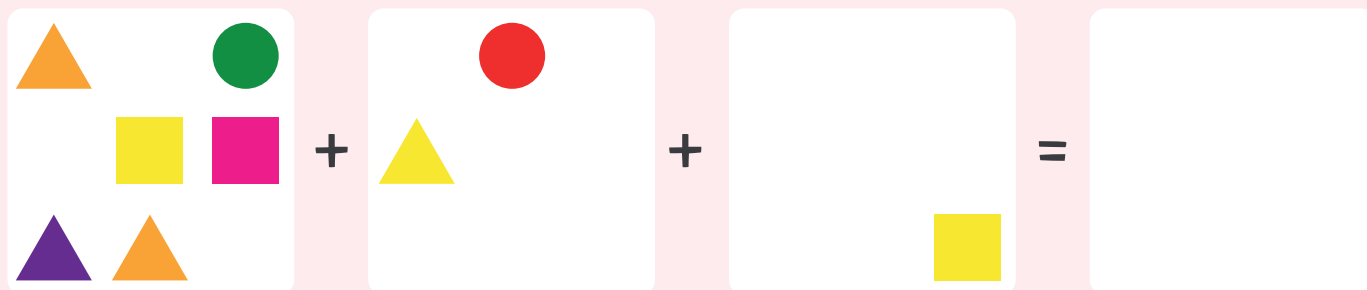
Instruction: Solve the following equations

$$\begin{array}{|c|c|} \hline \text{Red Square} & \text{Red Square} \\ \hline \text{Yellow Circle} & \\ \hline \end{array} + \begin{array}{|c|c|} \hline & \\ \hline \text{Blue Triangle} & \text{Blue Triangle} \\ \hline \end{array} - \begin{array}{|c|c|} \hline & \\ \hline \text{Yellow Circle} & \\ \hline \end{array} = \begin{array}{|c|c|} \hline \text{Red Square} & \text{Red Square} \\ \hline \text{Blue Triangle} & \text{Blue Triangle} \\ \hline \end{array}$$



$$\begin{array}{|c|c|} \hline \text{Green Square} & \text{Yellow Square} \\ \hline \text{Blue Square} & \text{Red Circle} \\ \hline \text{Yellow Circle} & \text{Green Square} \\ \hline \end{array} + \begin{array}{|c|c|} \hline & \text{Dark Blue Triangle} \\ \hline & \text{Pink Square} \\ \hline \text{Red Circle} & \\ \hline \end{array} - \begin{array}{|c|c|} \hline & \text{Yellow Square} \\ \hline \text{Blue Square} & \text{Red Circle} \\ \hline \text{Yellow Circle} & \\ \hline \end{array} = \begin{array}{|c|c|} \hline & \\ \hline & \\ \hline & \\ \hline \end{array}$$

$$\begin{array}{|c|c|} \hline \text{Yellow Triangle} & \text{Yellow Circle} \\ \hline & \text{Red Square} \\ \hline \text{Orange Triangle} & \text{Blue Square} \\ \hline & \text{Red Square} \\ \hline \end{array} + \begin{array}{|c|c|} \hline & \\ \hline \text{Yellow Circle} & \text{Blue Square} \\ \hline & \\ \hline \end{array} - \begin{array}{|c|c|} \hline & \text{Yellow Circle} \\ \hline & \text{Blue Square} \\ \hline \text{Blue Square} & \text{Red Square} \\ \hline \text{Orange Triangle} & \\ \hline \end{array} = \begin{array}{|c|c|} \hline & \\ \hline & \\ \hline & \\ \hline \end{array}$$

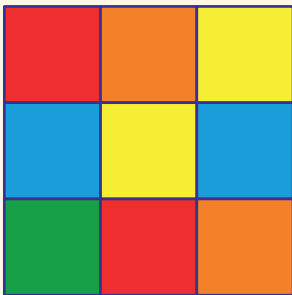


ACTIVITY 3

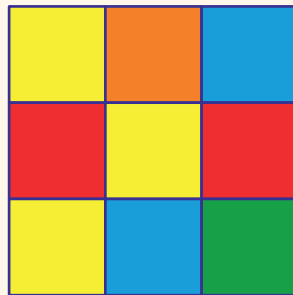
Mental Gymnastics with Miss Meridiem

1. Instruction: Choose the correct option to solve the equation

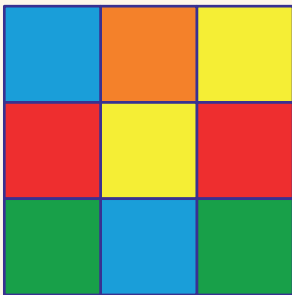
The equation is represented by two grids of colored squares. The first grid is 3 rows by 2 columns: the top row has one yellow square, the middle row has one yellow, one blue, and one green square, and the bottom row has one yellow, one blue, and one green square. This is followed by a plus sign and a second grid which is 2 rows by 3 columns: the top row has one yellow, one orange, and one blue square, and the bottom row has one red, one empty space, and one red square. This is followed by an equals sign and a large question mark.



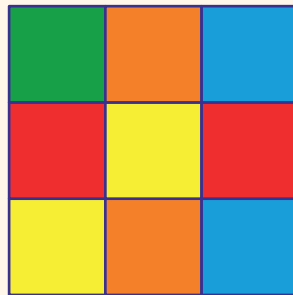
(A)



(B)



(C)



(D)



2. **Instruction:** Find and mark the missing slice



(A)



(B)



(C)



(D)

ACTIVITY 4

The Magic Potion with Officer Michael



Instruction: Amy found a magical potion that can turn children into their parents and parents into their children for a day. Amy wants to drink that potion and turn into her parent for a day.

Guess what? She is also willing to share the magic potion with you.





**Will you or will you not drink the magic potion?
Give four reasons.**

Reasons for drinking
the magic potion



1.

2.

Reasons for NOT drinking
the magic potion



1.

2.



Reasons for drinking
the magic potion



3.

4.

Reasons for NOT drinking
the magic potion



3.

4.

ACTIVITY 5

Fun with Ezra

Instruction: Find and circle five differences between the two images



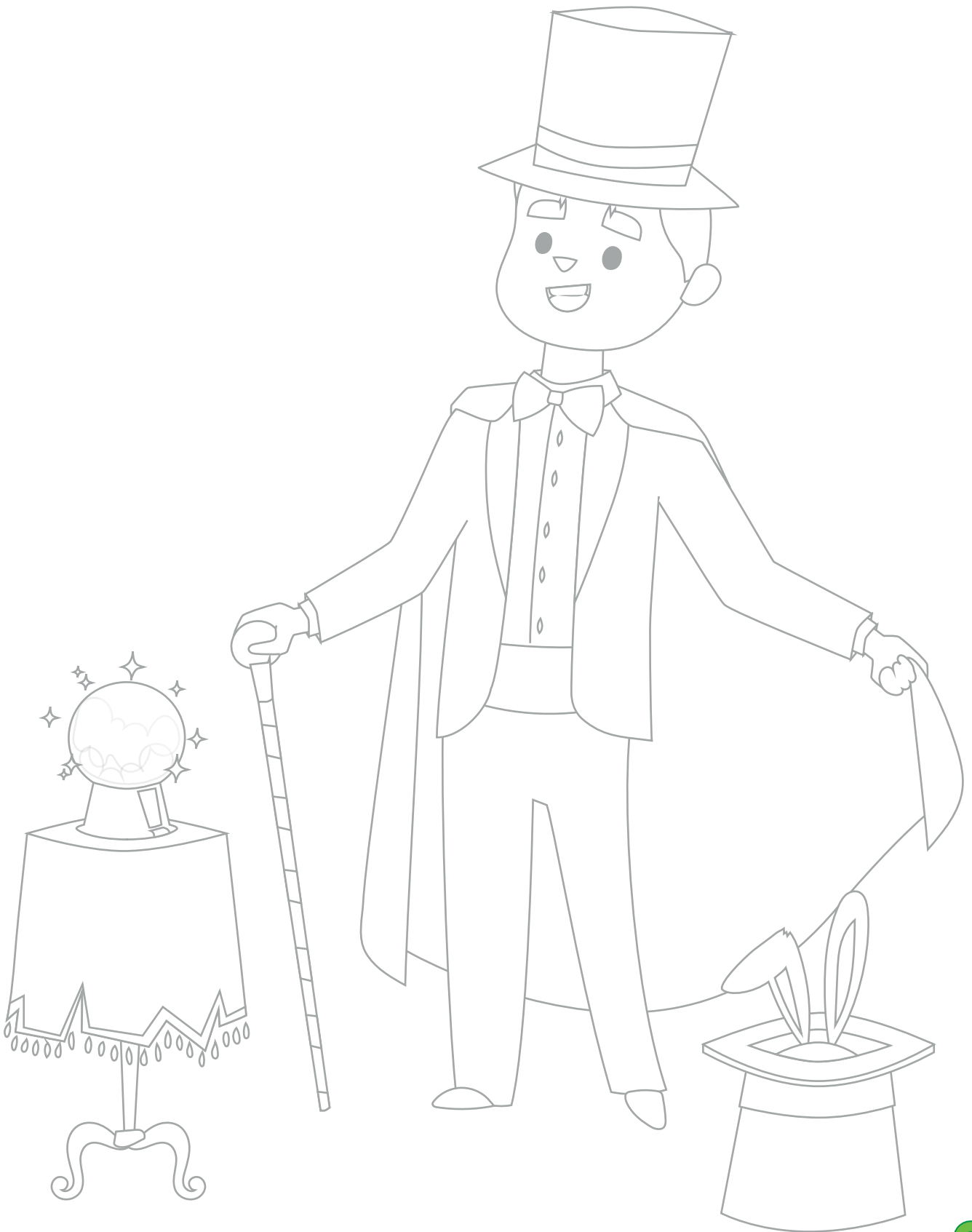
Instruction: Find and circle six differences between the two images



Instruction: Find the rabbit in this picture



Instruction: Fill this image with your favourite colours



BONUS STICKERS



SOLUTIONS

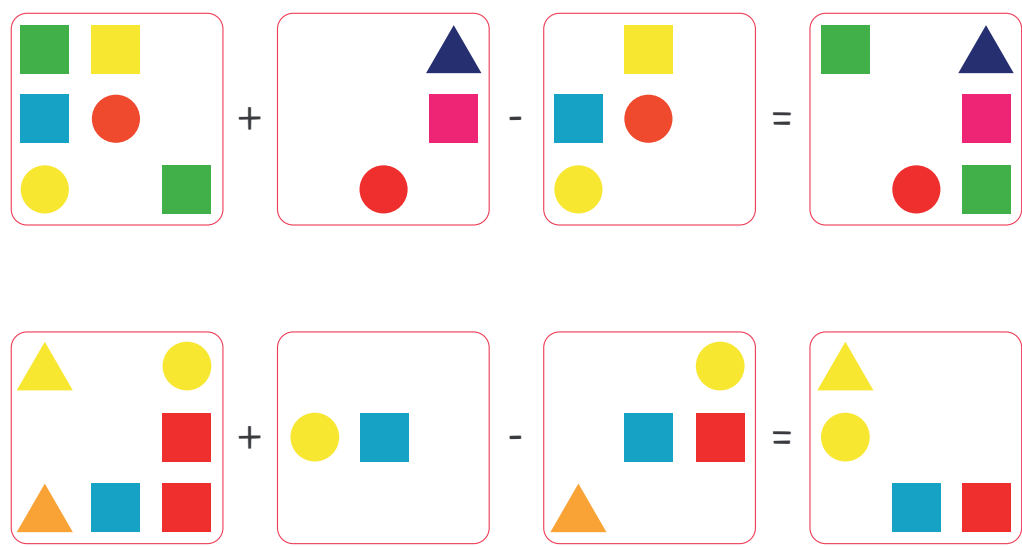
ACTIVITY 1

1. b. False

2. a. Misdirection
3. c. Both A and B

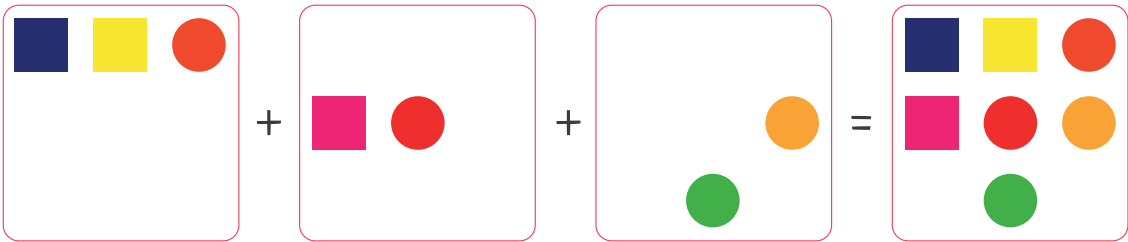
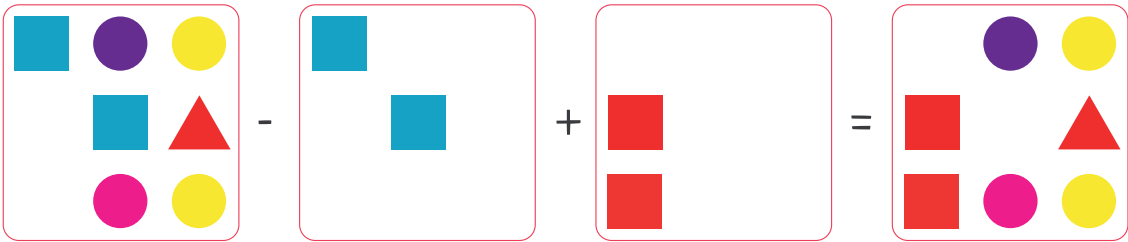
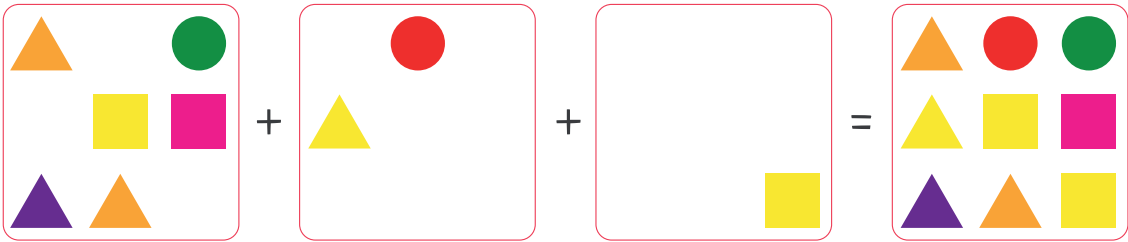
4. a. True
5. a. True

ACTIVITY 2



SOLUTIONS

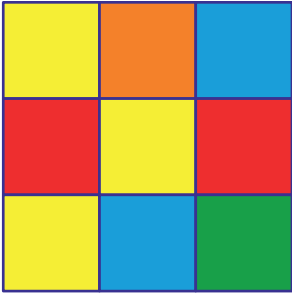
ACTIVITY 2



SOLUTIONS

ACTIVITY 3

1. (B)



2. (C)



ACTIVITY 5

1.



SOLUTIONS

ACTIVITY 5

2.



3.

